



4 bed option available

# THE GREEN

## WALTHAM

### 2.5 Mews

### 4 Bedroom Terrace

#### GROUND FLOOR

W(m)xH(m)

W(')xH(')

Kitchen/Dining

3.000mx5.900m

9'10"x19'4"

Lounge

5.300mx3.600m

17'5"x11'10"

#### FIRST FLOOR

Bedroom 2

5.300mx3.600m

17'5"x11'10"

Bedroom 3

3.200mx3.600m

10'6"x11'10"

Study

2.500mx1.650m

8'2"x5'5"

#### SECOND FLOOR

Master Bedroom

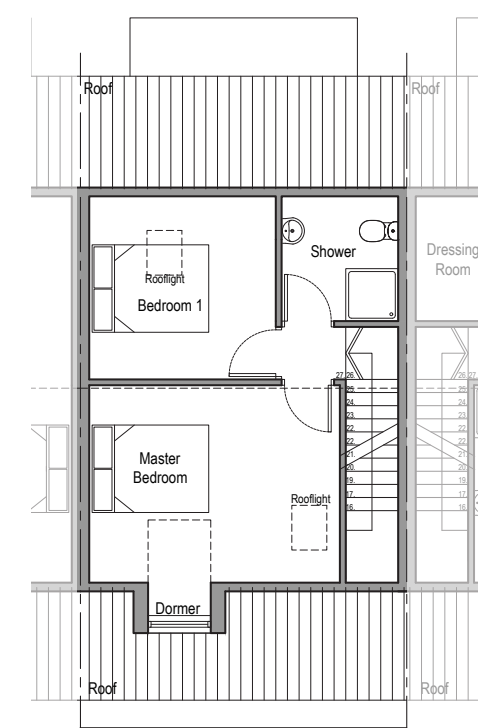
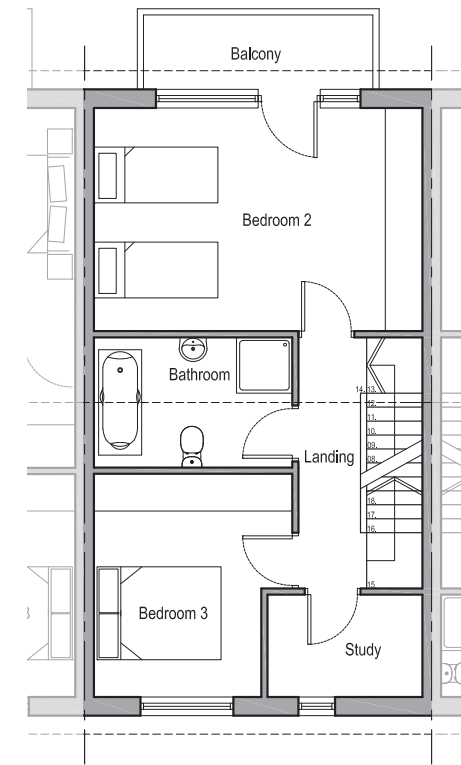
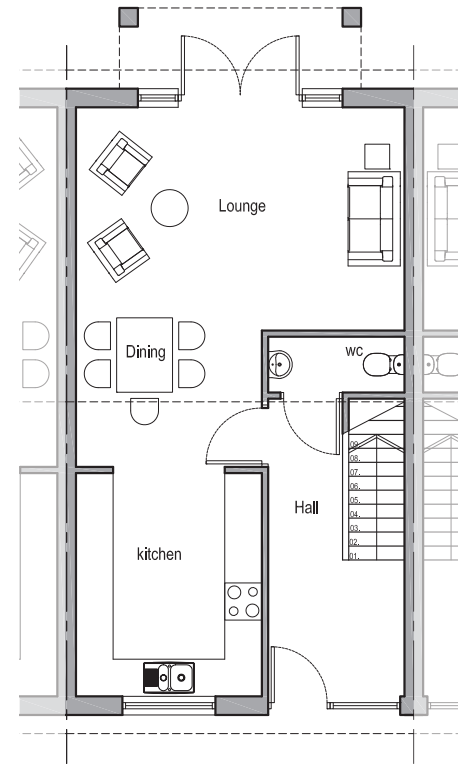
4.420mx3.385m

14'6"x 11'1"

Bedroom 1

3.330mx3.140m

10'11"x10'4"



Details are given as a general guide and are subject to alteration. The plans shown are not to scale and the dimensions should be used for reference only and should not be relied on for ordering carpets and furniture. For individual plot details please contact Canters. These details do not represent any contractual offer or obligation on behalf of Canters.



# THE GREEN

WALTHAM

## Site Plan











Details are given as a general guide and are subject to alteration. The plans shown are not to scale and the dimensions should be used for reference only and should not be relied on for ordering carpets and furniture. For individual plot details please contact Canters. These details do not represent any contractual offer or obligation on behalf of Canters.



# THE GREEN WALTHAM

## Development Layout

KEY:

-  Bungalow Type A
-  Bungalow Type B
-  Detached Type A
-  Semi-Detached Type A
-  1.5 Mews
-  2.5 Mews
-  Townhouse
-  Cottage



Cheapside

Details are given as a general guide and are subject to alteration. The plans shown are not to scale and the dimensions should be used for reference only and should not be relied on for ordering carpets and furniture. For individual plot details please contact Canters. These details do not represent any contractual offer or obligation on behalf of Canters.

