



Chatham Place, Brighton, BN1 3TN
£230,000



Property Type: Flat

Bedrooms: 1

Bathrooms: 1

Receptions: 1

Tenure: Leasehold

Council Tax Band: A

- First Floor Apartment
- No Chain
- Double Bedroom
- Spacious Living Room
- Separate Kitchen
- Long Lease
- Great Central Location
- Close to Cafes and Brighton Station

Spacious first floor apartment in the heart of Seven Dials offered with a long lease and no onward chain. Close to cafes, shops and Brighton Station.





INTERNAL

Situated in the heart of the ever popular Seven Dials district, this spacious first floor apartment offers well proportioned rooms, excellent natural light and the huge advantage of being sold with a long lease and no onward chain. Perfect as a first home, pied-à-terre or investment purchase, the property is moments from local independent shops, cafés and Brighton Station.

Entering the apartment, a welcoming entrance hall provides access to all rooms and offers useful space for coats and storage.

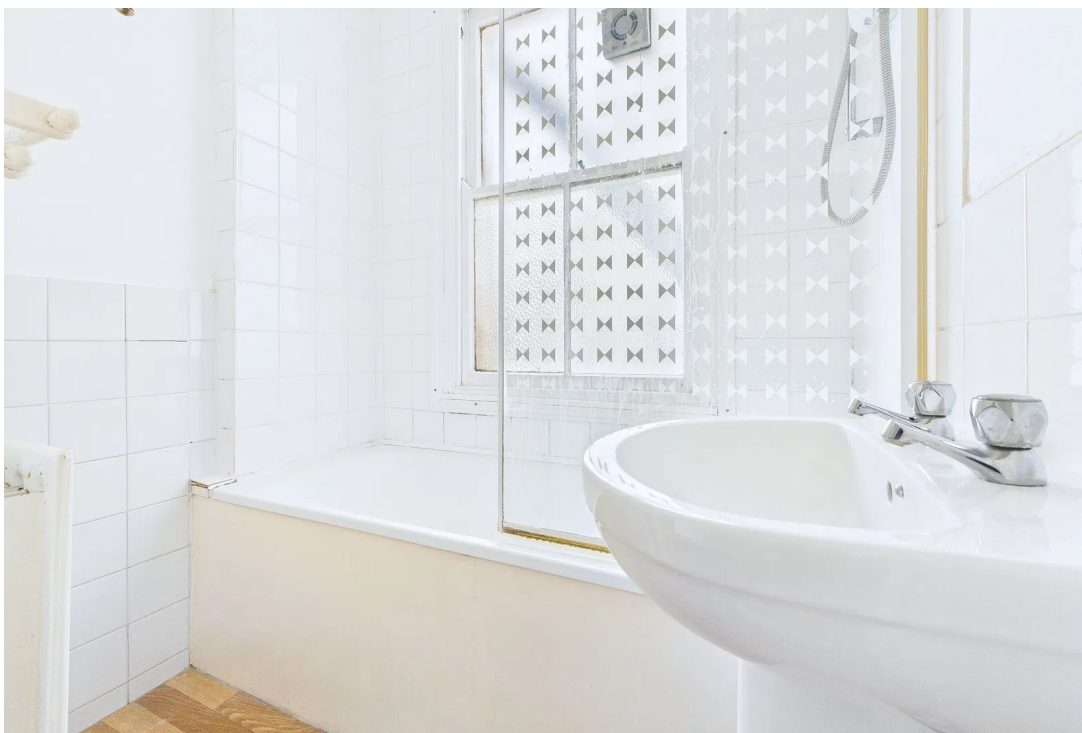
The living room is a bright and generously sized space, ideal for relaxing or entertaining, with a pleasant outlook and ample room for both seating and dining furniture.

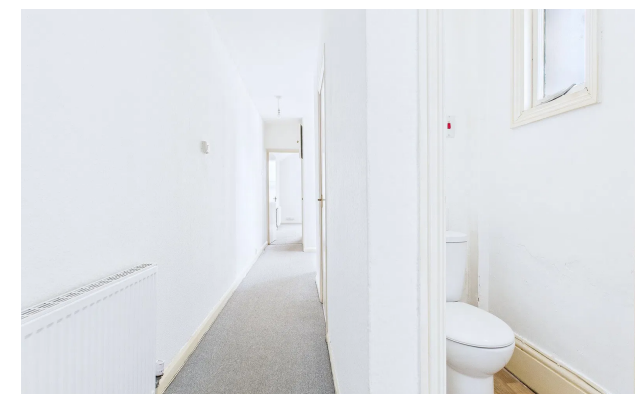
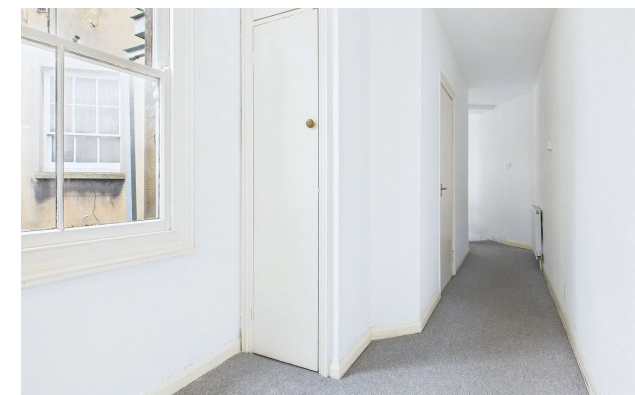
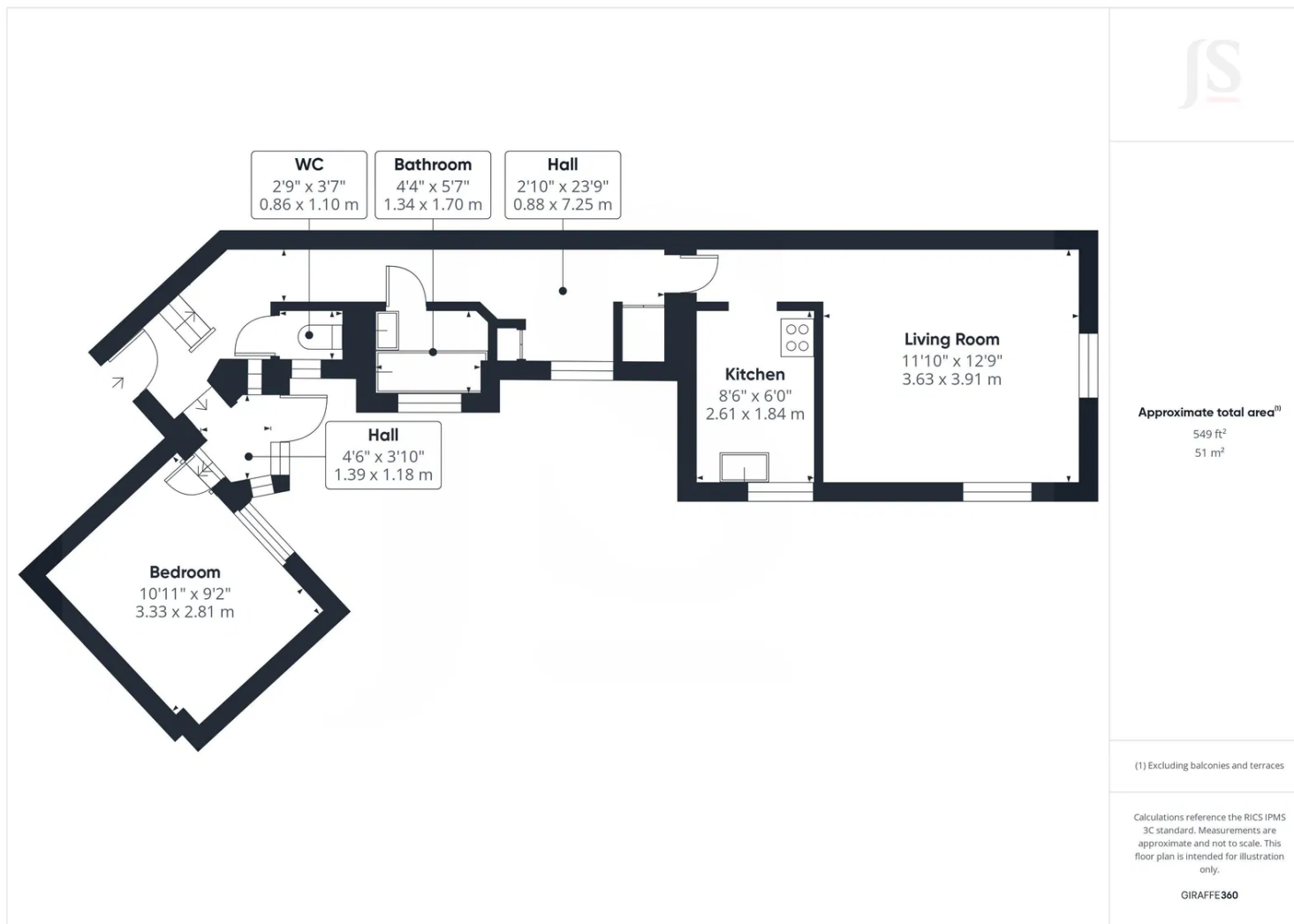
A separate kitchen sits just off the hall, fitted with a good range of cupboards, worktops and space for appliances, providing practical and functional cooking space. The property features a spacious double bedroom, offering comfortable proportions for larger furnishings. A bathroom with bath and basin serves the apartment, while a separate WC adds additional convenience.

LOCATION

Chatham Place is perfectly positioned within Seven Dials, one of Brighton's most desirable neighbourhoods known for its vibrant village atmosphere and excellent amenities. A fantastic selection of independent shops, artisan cafés, bakeries, restaurants and pubs are just moments away.

Brighton Station is within easy walking distance, making this an excellent choice for commuters. Bus routes, green spaces and the city centre are all easily accessible, ensuring the location combines convenience with a strong community feel.





Whilst we endeavour to make our properties particulars accurate and reliable, we have not carried out a detailed survey. If there is any point which is of particular importance to you, please contact the office and we will be pleased to check the information for you, particularly if you are contemplating travelling some distance. Whilst every effort has been made to ensure that any floorplans are correct and drawn as accurately as possible, they are to be used for layout and identification purposes only and are not drawn to scale. The services, where applicable, including electrical equipment and other appliances have not been tested and no warranty can be given that they are in working order, even where described in these particulars. Carpets, curtains, furnishing, gas fires, electrical goods/ fittings or other fixtures, unless expressly mentioned, are not necessarily included with the property.