



**Ditchling Rise, Brighton, BN1 4QN**

**£230,000**





**Property Type:** Flat

**Bedrooms:** 1

**Bathrooms:** 1

**Receptions:** 1

- NO ONWARD CHAIN
- One-bedroom converted maisonette
- Additional office/study space on upper level
- Bright, spacious interiors with period charm
- Excellent location near London Road Station and local amenities
- Popular Preston Park Location
- One Double Bedroom
- Period Building

Charming 1-Bedroom Maisonette –  
Ditchling Rise, Brighton







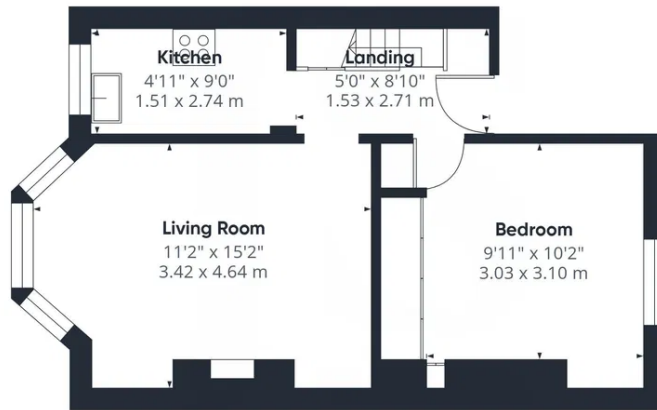
Located in one of Brighton's most sought-after residential areas, this delightful one-bedroom maisonette offers a wonderful blend of character, comfort, and convenience.

Set within a period conversion, the property spans two floors and features a spacious lounge with plenty of natural light, a separate fitted kitchen, and a generous double bedroom. Upstairs, you'll also find a versatile office space, ideal for working from home or as a creative studio.

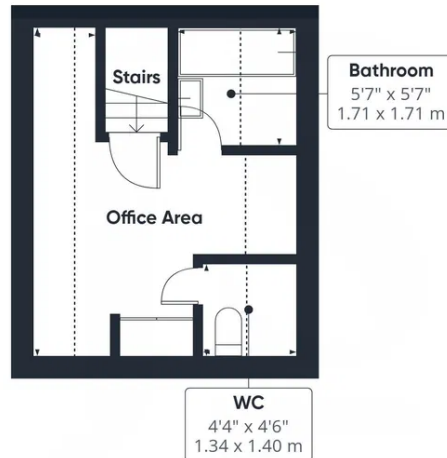
With its elevated position, the maisonette enjoys a bright and airy feel throughout. The property retains much of its period charm while offering modern touches for everyday living.

Perfectly situated just moments from London Road Station, Preston Park, and a great selection of cafés, shops, and transport links, this home suits professionals and couples alike looking for stylish Brighton living close to the city center.





Ground Floor



Floor 1



**Approximate total area<sup>m</sup>**

581 ft<sup>2</sup>

54 m<sup>2</sup>

**Reduced headroom**

67 ft<sup>2</sup>

6.2 m<sup>2</sup>

(1) Excluding balconies and terraces

Reduced headroom

..... Below 5 ft/1.5 m

Calculations reference the RICS IPMS 3C standard. Measurements are approximate and not to scale. This floor plan is intended for illustration only.

GIRAFFE360



Whilst we endeavour to make our properties particulars accurate and reliable, we have not carried out a detailed survey. If there is any point which is of particular importance to you, please contact the office and we will be pleased to check the information for you, particularly if you are contemplating travelling some distance. Whilst every effort has been made to ensure that any floorplans are correct and drawn as accurately as possible, they are to be used for layout and identification purposes only and are not drawn to scale. The services, where applicable, including electrical equipment and other appliances have not been tested and no warranty can be given that they are in working order, even where described in these particulars. Carpets, curtains, furnishing, gas fires, electrical goods/ fittings or other fixtures, unless expressly mentioned, are not necessarily included with the property.