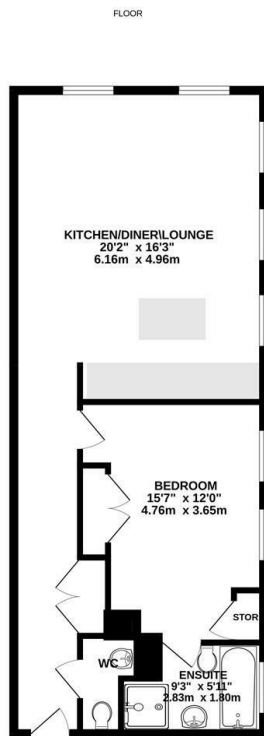




8 The Mills Building, Plumpton Street, Nottingham, NG1 1JL

Offers In The Region Of £140,000

- First Floor Apartment
- Sought After City Centre Location
- One Double Bedroom
- Ideal Investment Opportunity
- Spacious Open Plan Reception Room
- Council Tax Band C & EPC Rating B



Whilst every attempt has been made to ensure the accuracy of the floorplan contained here, measurements of doors, windows, rooms and any other items are approximate and no responsibility is taken for any error, omission or mis-statement. This plan is for illustrative purposes only and should be used as such by any prospective purchaser. The services, systems and appliances shown have not been tested and no guarantee as to their operability or efficiency can be given.
Made with Metrage ©2024



Directions

Viewings

Viewings by arrangement only. Call 01623 747 956 to make an appointment.

Council Tax Band

C

EPC Rating:

B

Energy Efficiency Rating		Current	Potential
<i>Very energy efficient - lower running costs</i>			
(92 plus) A			
(81-91) B		84	84
(69-80) C			
(55-68) D			
(39-54) E			
(21-38) F			
(1-20) G			
<i>Not energy efficient - higher running costs</i>			
England & Wales		EU Directive 2002/91/EC	