

# Harold House

1, 2 and 3 bedroom homes

---

Apartments 72 - 96



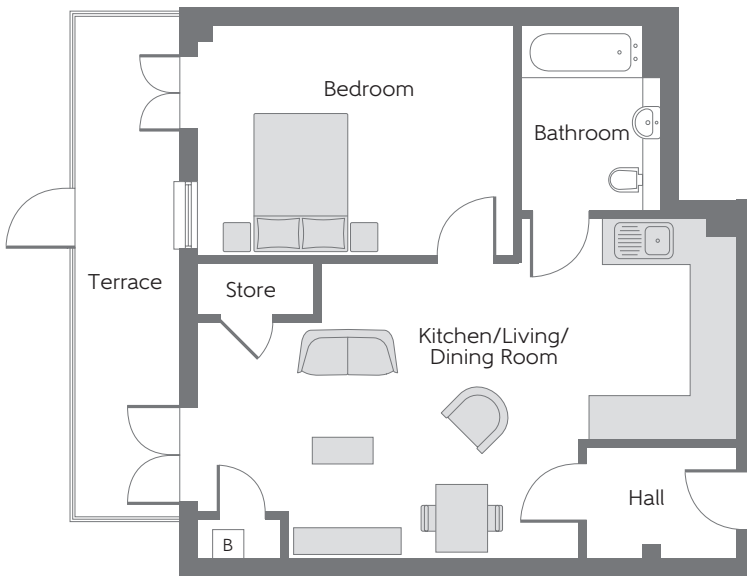
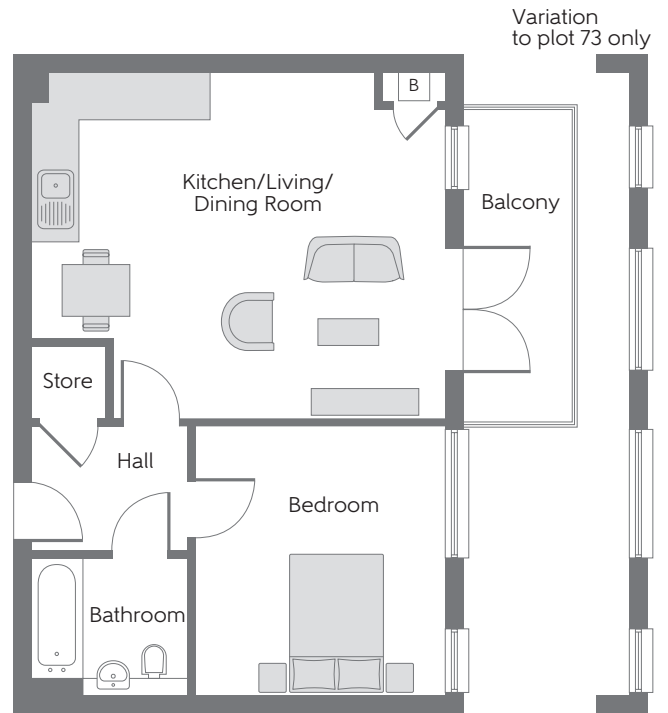
Bellway Homes Limited (Thames Valley Division)  
Pacific House, Imperial Way, Reading  
Berkshire RG2 0TD

Telephone: 0118 933 8020 Fax: 0118 931 3929  
[www.bellway.co.uk](http://www.bellway.co.uk)

**Bellway**

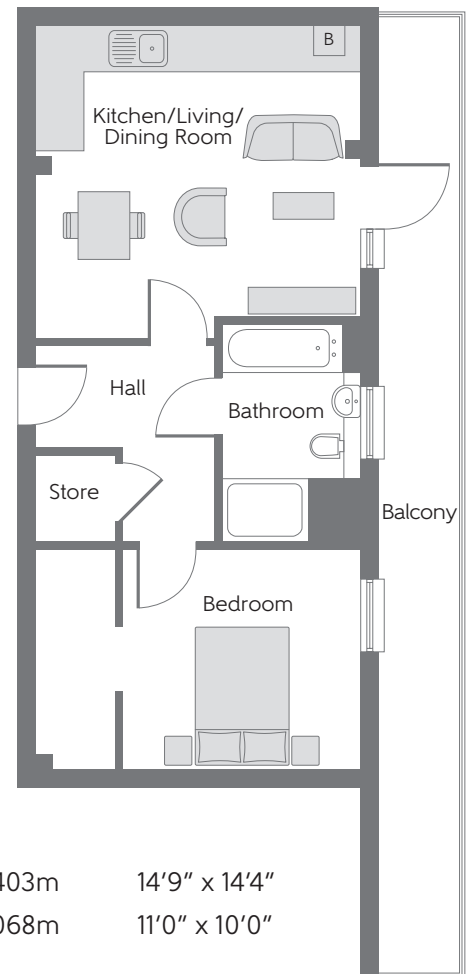
**The Perpetua**  
**Apartments 73, 77 & 84**

Kitchen/Living/ Dining Room	5.794m x 4.860m	19'0" x 15'9"
Bedroom	3.786m x 3.518m	12'4" x 11'5"



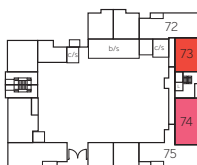
**The Italic**  
**Apartment 81**

Kitchen/Living/ Dining Room	7.586m x 4.132m	24'8" x 13'7"
Bedroom	4.470m x 3.240m	14'7" x 10'6"



**The Coronet**  
**Apartment 91**

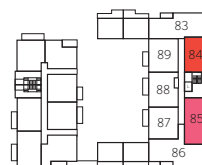
Kitchen/Living/ Dining Room	4.554m x 4.403m	14'9" x 14'4"
Bedroom	3.354m x 3.068m	11'0" x 10'0"



Ground Floor



First Floor



Second Floor



Third Floor

**The Calisto  
Apartment 92**

Kitchen/Living/  
Dining Room

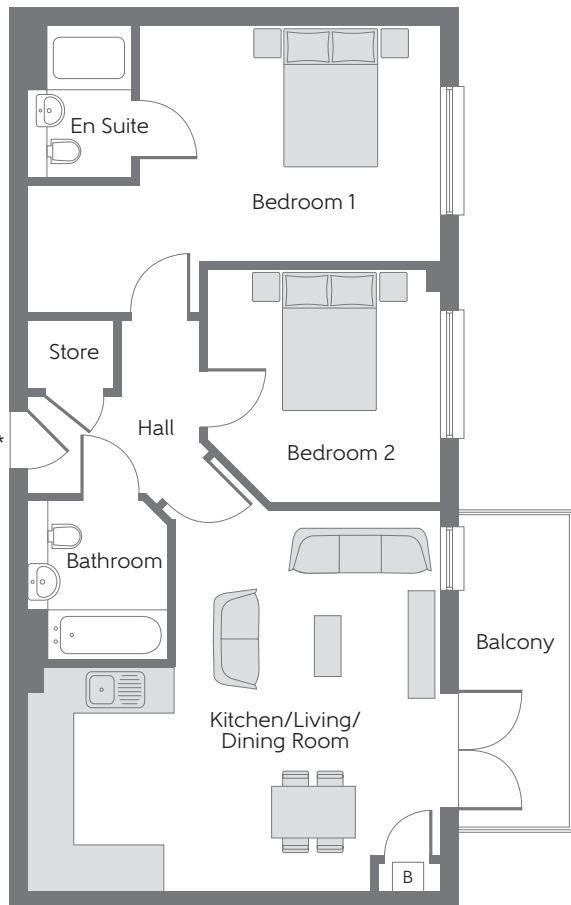
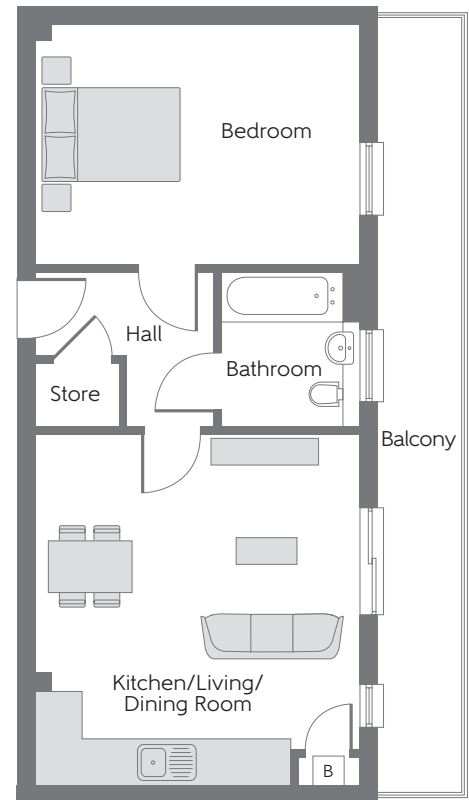
4.943m x 4.554m

16'2" x 14'9"

Bedroom

4.554m x 3.381m

14'9" x 11'1"



\* Variation to door swing  
and position to plot 74 only

**The Serif  
Apartments 74, 78 & 85**

Kitchen/Living/  
Dining Room

6.128m x 5.355m

20'1" x 17'7"

Bedroom 1

5.791m x 4.033m

19'0" x 13'2"

Bedroom 2

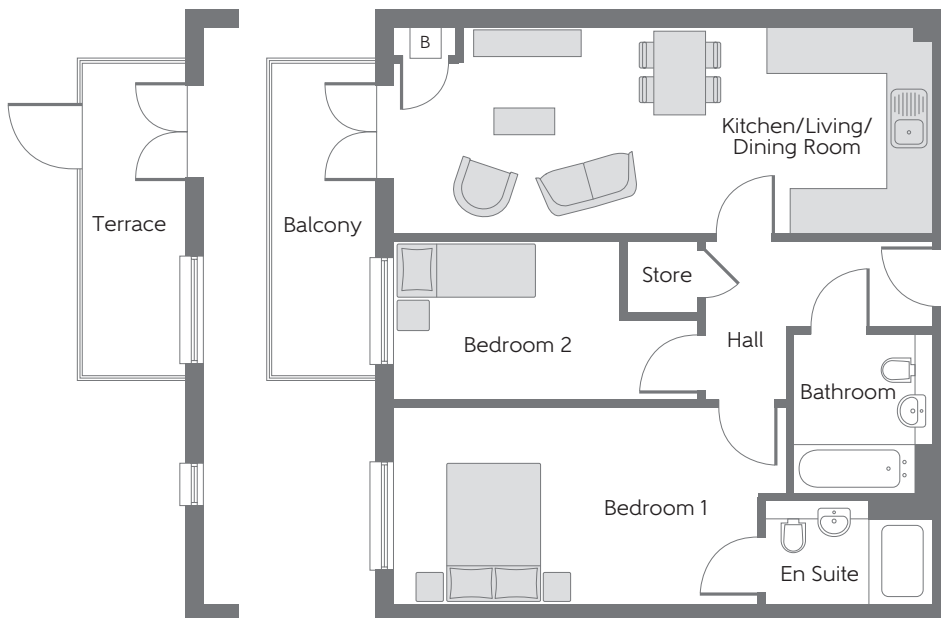
3.305m x 3.279m

10'8" x 10'8"

Variation to  
plot 74 only

B Boiler c/s Cycle store b/s Bin store L Lift

Some items shown in this key may be subject to change, and positions could vary from those indicated on this floorplan. Please refer to Sales Advisor for details of your selected plot. Computer generated image shown overleaf. External finishes and landscaping may vary from plot to plot. Please refer to Sales Advisor for further details. All dimensions are approximate and should not be used for carpet sizes, appliance spaces, or furniture. Furniture not to scale and all positions are indicative. We operate a policy of continuous improvement and individual features such as kitchen and bathroom layouts, doors, windows, garages and elevational treatments may vary from time to time. Consequently these particulars should be treated as general guidance only and do not constitute a contract, part of a contract or a warranty.



Variation to  
plot 80 only

### The Lucida

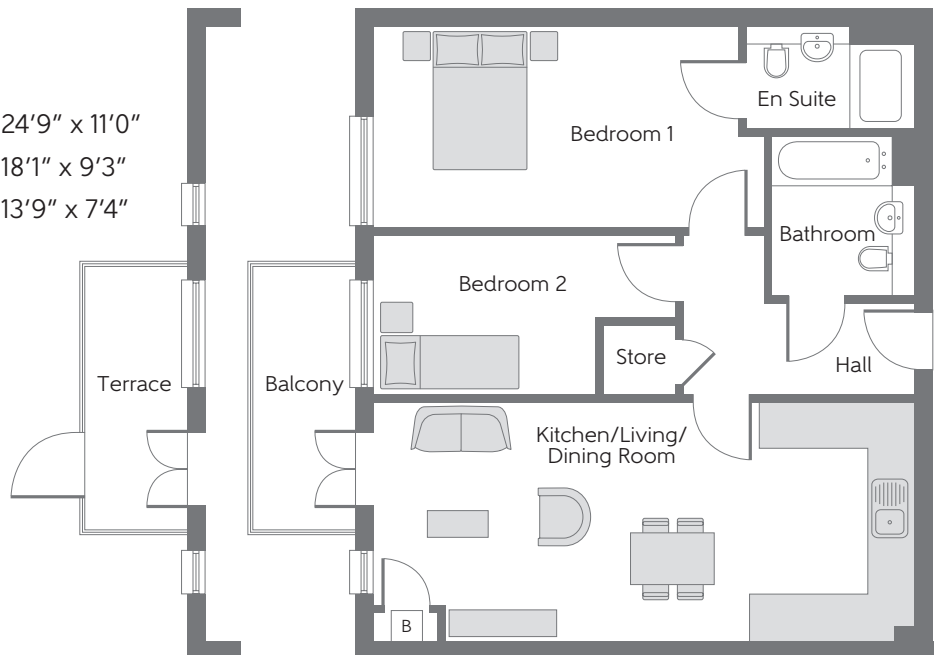
#### Apartments 80, 87 & 94

Kitchen/Living/ Dining Room	7.586m x 2.919m	24'9" x 9'6"
Bedroom 1	5.538m x 2.780m	18'2" x 9'1"
Bedroom 2	4.291m x 2.233m	14'0" x 7'3"

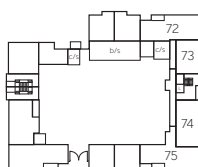
### The Helvetica

#### Apartments 82, 89 & 96

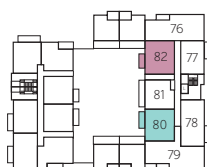
Kitchen/Living/ Dining Room	7.586m x 3.365m	24'9" x 11'0"
Bedroom 1	5.530m x 2.849m	18'1" x 9'3"
Bedroom 2	4.238m x 2.250m	13'9" x 7'4"



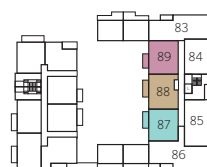
Variation to  
plot 82 only



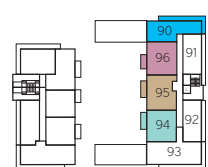
Ground Floor



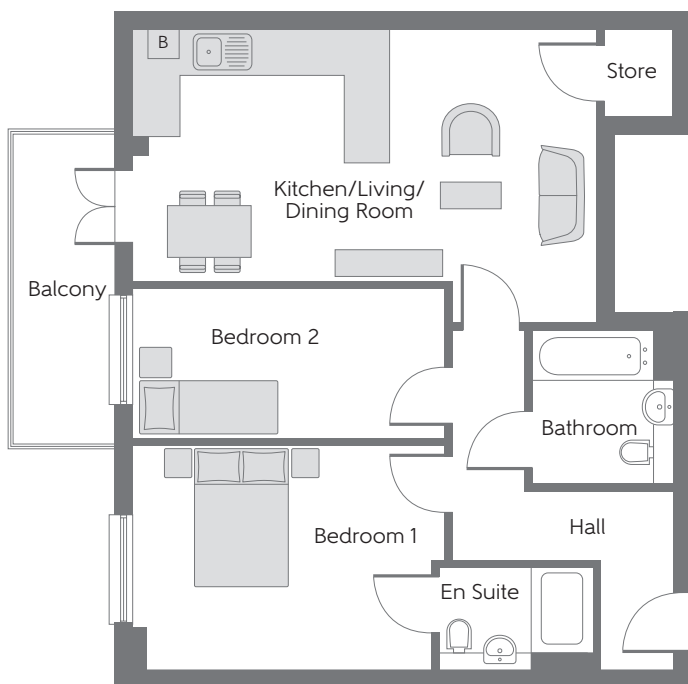
First Floor



Second Floor

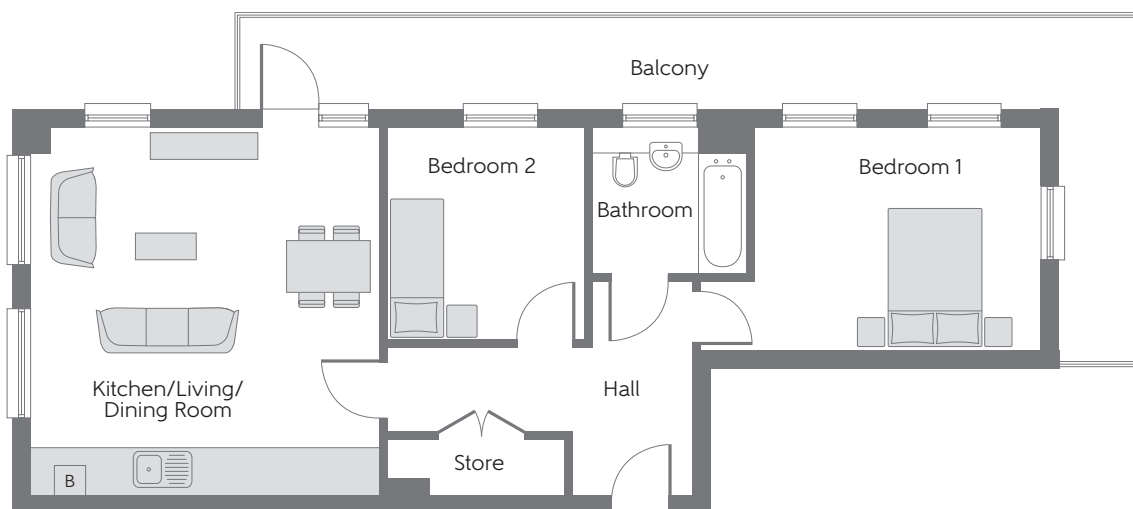


Third Floor



**The Dauphin**  
**Apartments 88 & 95**

Kitchen/Living/ Dining Room	6.517m x 4.132m	21'4" x 13'6"
Bedroom 1	4.393m x 3.172m	14'4" x 10'4"
Bedroom 2	4.393m x 2.112m	14'4" x 6'9"



**The Garamond**  
**Apartment 90**

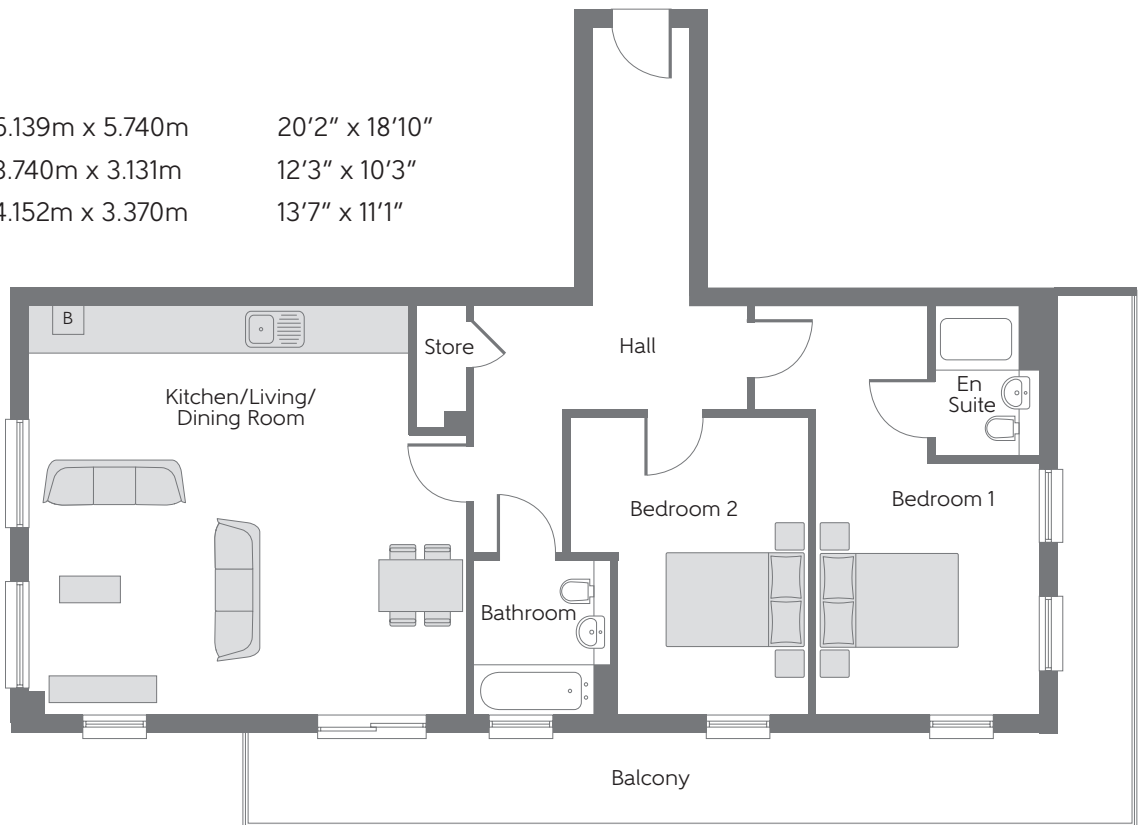
Kitchen/Living/ Dining Room	5.147m x 4.899m	16'9" x 16'1"
Bedroom 1	4.800m x 3.149m	15'9" x 10'3"
Bedroom 2	2.994m x 2.782m	9'8" x 9'1"

B Boiler c/s Cycle store b/s Bin store L Lift

Some items shown in this key may be subject to change, and positions could vary from those indicated on this floorplan. Please refer to Sales Advisor for details of your selected plot. Computer generated image shown overleaf. External finishes and landscaping may vary from plot to plot. Please refer to Sales Advisor for further details. All dimensions are approximate and should not be used for carpet sizes, appliance spaces, or furniture. Furniture not to scale and all positions are indicative. We operate a policy of continuous improvement and individual features such as kitchen and bathroom layouts, doors, windows, garages and elevational treatments may vary from time to time. Consequently these particulars should be treated as general guidance only and do not constitute a contract, part of a contract or a warranty.

**The Albertus**  
**Apartment 93**

Kitchen/Living/ Dining Room	6.139m x 5.740m	20'2" x 18'10"
Bedroom 1	3.740m x 3.131m	12'3" x 10'3"
Bedroom 2	4.152m x 3.370m	13'7" x 11'1"



**The Myriad**  
**Apartments 79 & 86**

Kitchen/Living/ Dining Room	7.836m x 5.625m	25'7" x 18'5"
Bedroom 1	6.039m x 2.989m	19'10" x 9'8"
Bedroom 2	4.249m x 2.650m	13'9" x 8'7"
Bedroom 3	3.365m x 2.610m	11'0" x 8'6"



**Ground Floor**



**First Floor**



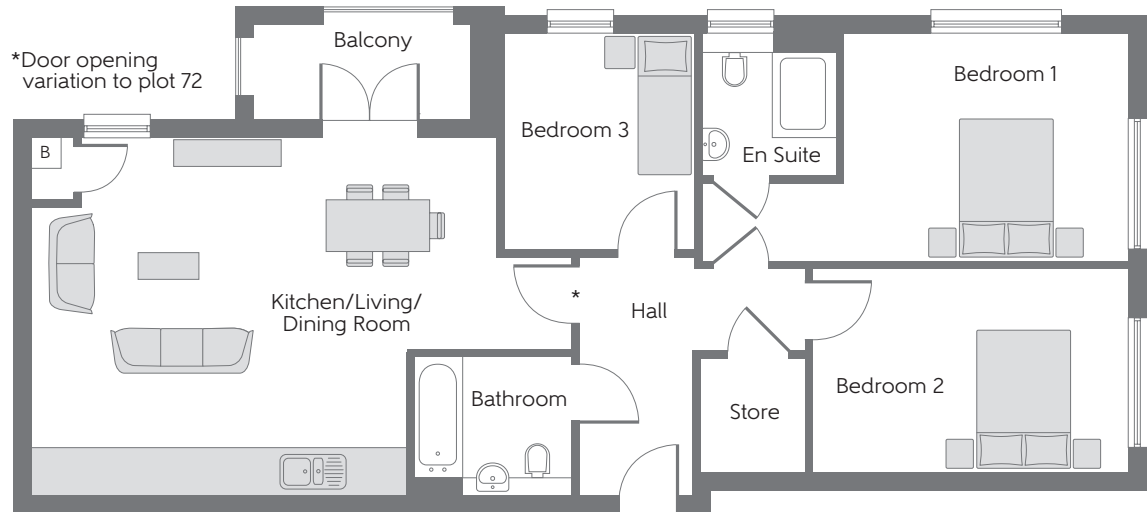
**Second Floor**



**Third Floor**

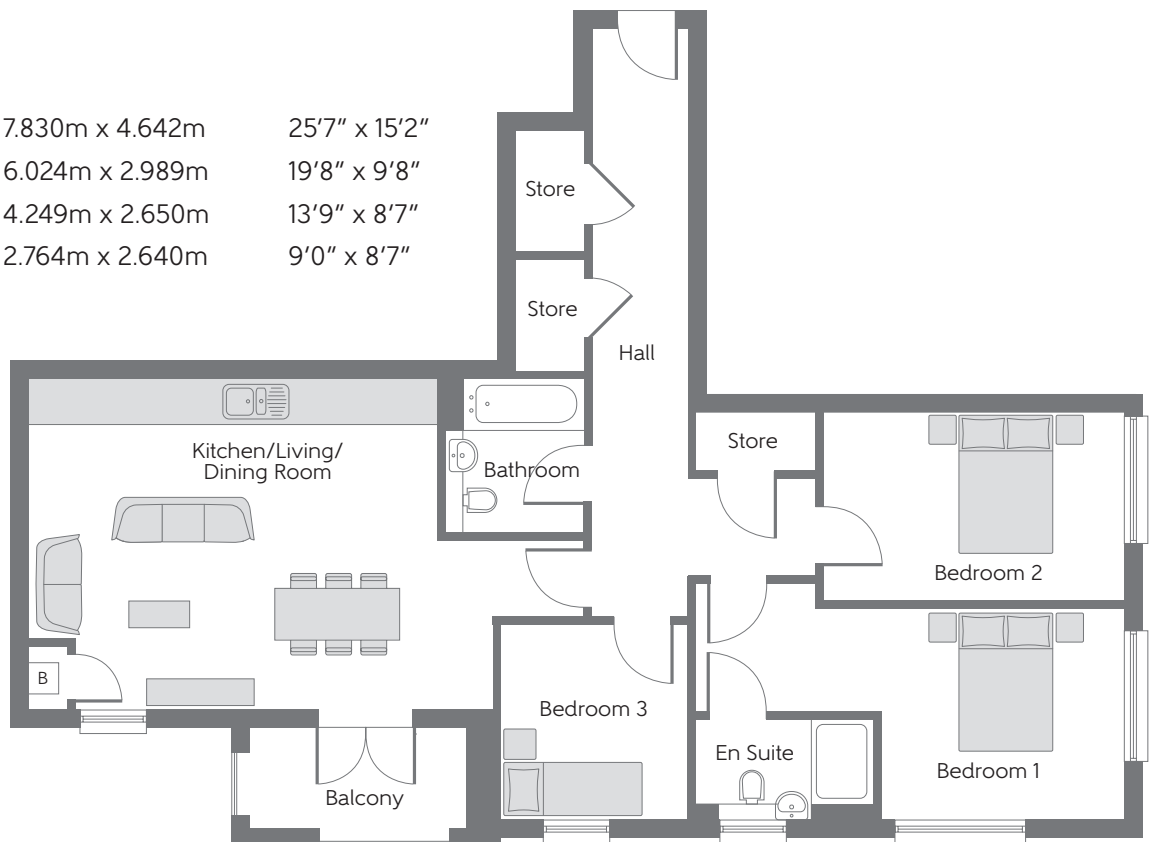
**The Roman**  
**Apartments 72, 76 83**

Kitchen/Living/ Dining Room	7.642m x 5.032m	25'1" x 16'5"
Bedroom 1	6.014m x 3.200m	19'9" x 10'5"
Bedroom 2	4.436m x 2.882m	14'6" x 9'5"
Bedroom 3	4.463m x 2.882m	14'8" x 9'7"



**The Bodoni**  
**Apartment 75**

Kitchen/Living/ Dining Room	7.830m x 4.642m	25'7" x 15'2"
Bedroom 1	6.024m x 2.989m	19'8" x 9'8"
Bedroom 2	4.249m x 2.650m	13'9" x 8'7"
Bedroom 3	2.764m x 2.640m	9'0" x 8'7"



B Boiler c/s Cycle store b/s Bin store L Lift

Some items shown in this key may be subject to change, and positions could vary from those indicated on this floorplan. Please refer to Sales Advisor for details of your selected plot. Computer generated image shown overleaf. External finishes and landscaping may vary from plot to plot. Please refer to Sales Advisor for further details. All dimensions are approximate and should not be used for carpet sizes, appliance spaces, or furniture. Furniture not to scale and all positions are indicative. We operate a policy of continuous improvement and individual features such as kitchen and bathroom layouts, doors, windows, garages and elevational treatments may vary from time to time. Consequently these particulars should be treated as general guidance only and do not constitute a contract, part of a contract or a warranty. 206265/04/21.

Bellway