



17 Earlswood View, Irvine, KA11 2FG

Offers In Excess of **£245,000**

DONALD
ROSS
RESIDENTIAL



17 Earlswood View

Irvine, KA11 2FG

Spacious 4-bed detached villa with lounge, kitchen, dining room, master en-suite, garage, driveway, and enclosed rear garden in a popular Irvine location close to schools, shops, and commuter routes.

Council Tax band: F

Tenure: Freehold

EPC Energy Efficiency Rating: C

EPC Environmental Impact Rating: C

- Modern 4-bedroom detached villa in a sought-after development
- Bright, spacious lounge with large windows
- Contemporary fitted kitchen with separate dining room
- Convenient downstairs WC
- Master bedroom with en-suite shower room
- Three further generously sized bedrooms
- Stylish family bathroom
- Large monobloc driveway for multiple vehicles
- Integrated single garage
- Enclosed rear garden, perfect for outdoor living





























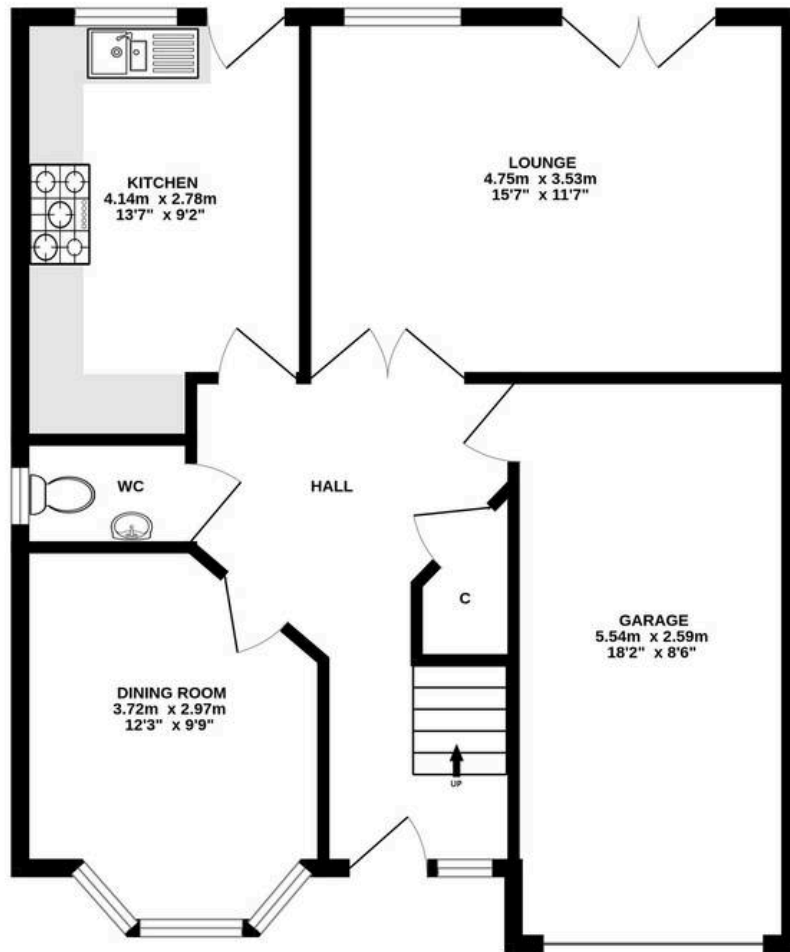




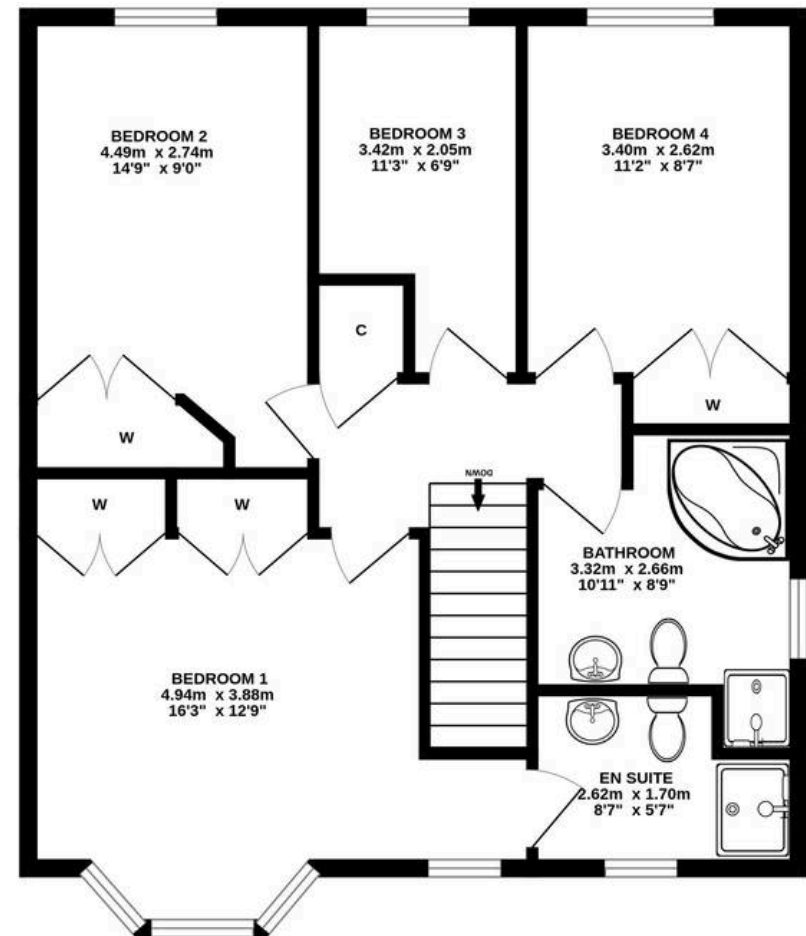




GROUND FLOOR



1ST FLOOR



ALL SIZES TAKEN AT WIDEST POINTS

Whilst every attempt has been made to ensure the accuracy of the floorplan contained here, measurements of doors, windows, rooms and any other items are approximate and no responsibility is taken for any error, omission or mis-statement. This plan is for illustrative purposes only and should be used as such by any prospective purchaser. The services, systems and appliances shown have not been tested and no guarantee as to their operability or efficiency can be given.
Made with Metropix ©2025



Donald Ross Residential Irvine

Donald Ross Estate Agents, 9B Riverway Retail Park Riverway – KA12 8AG

01294 446788 • irvine@donaldross.co.uk • www.donaldross.co.uk

While every effort has been made to ensure accuracy, buyers should independently verify all details and review the Home Report before submitting an offer. No warranty or representation is given regarding the property, and neither the agent nor the seller accepts responsibility for any inaccuracies. Buyers must satisfy themselves on all legal aspects.