



22 Dubbs Road, Stevenston

In Excess of £220,000

DONALD  
**ROSS**  
RESIDENTIAL





## 22 Dubbs Road

Stevenston, Stevenston

Donald Ross Residential are delighted to welcome to the market 22 Dubbs Road, Stevenston – a charming three bedroom detached bungalow in walk in condition, set on a generous plot with picturesque countryside views.

Council Tax band: D

Tenure: Freehold

EPC Energy Efficiency Rating: D

EPC Environmental Impact Rating:

- Generous Plot with Countryside Outlook
- Hallway
- Front Facing Lounge with Beautiful Views
- Kitchen
- Three Double Bedrooms
- Conservatory
- Walk in Condition
- Gas Central Heating & Double Glazed
- Two Driveways & Detached Garage
- Walking Distance to Local Amenities with Great Road & Rail Links







































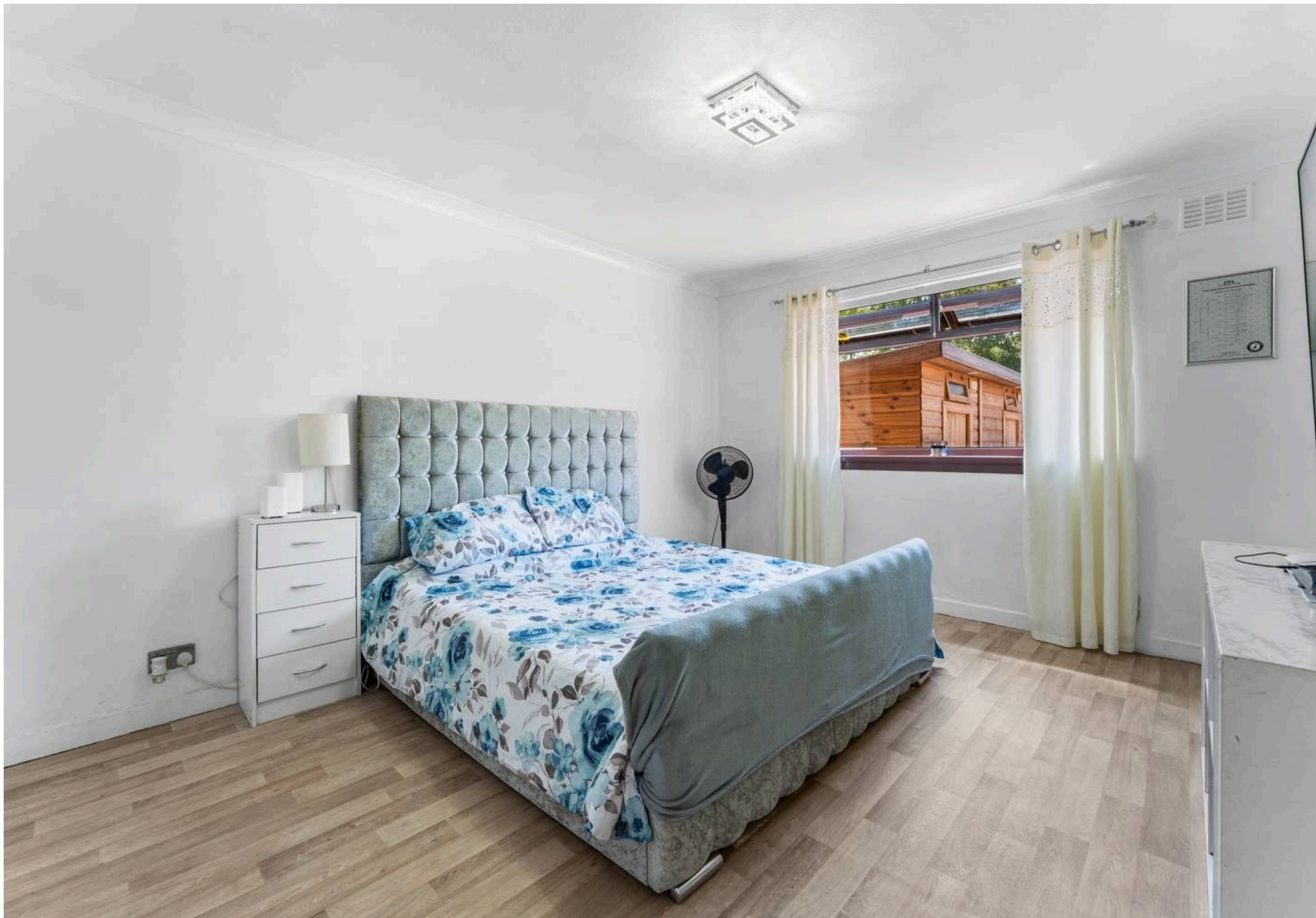




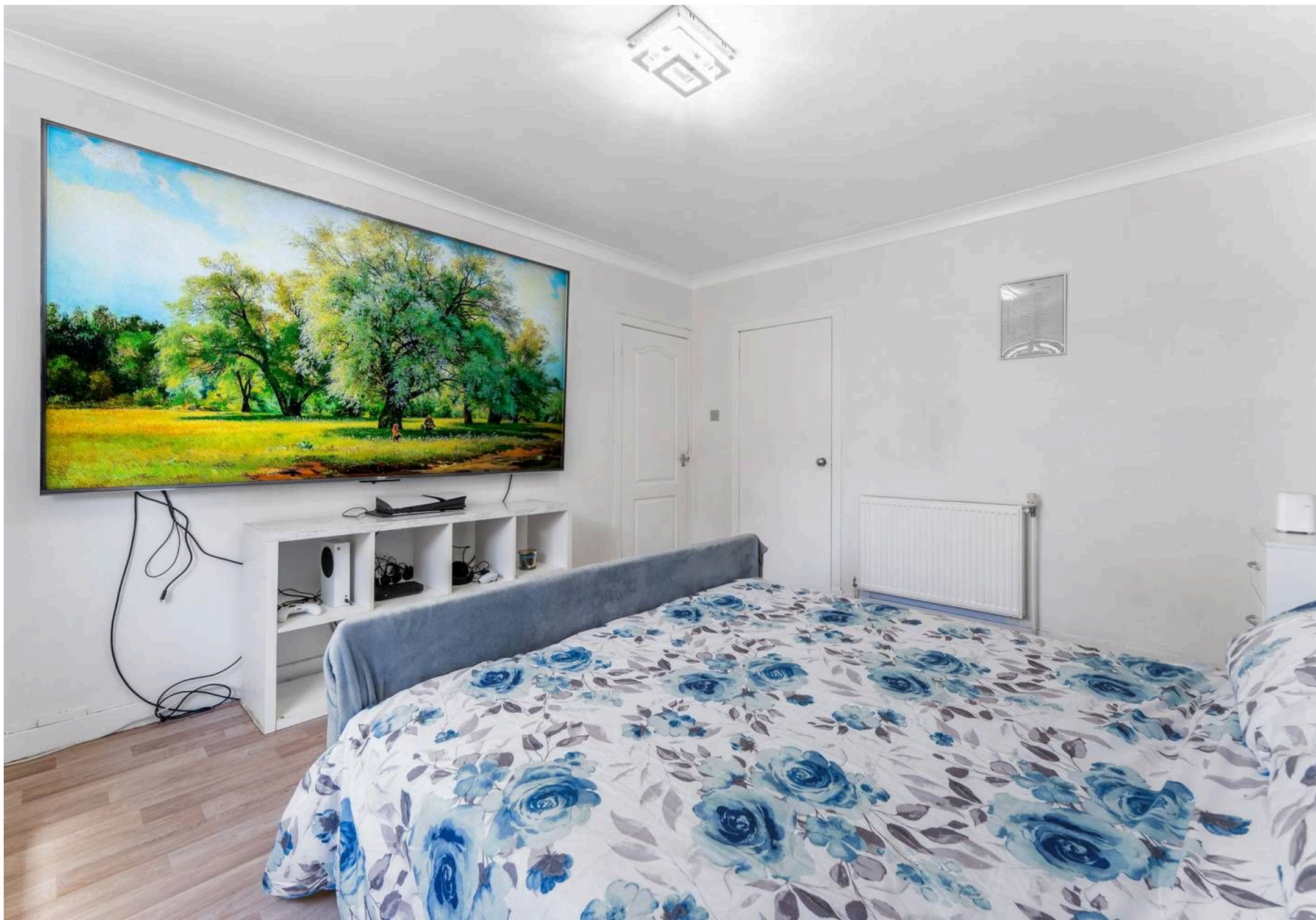


















































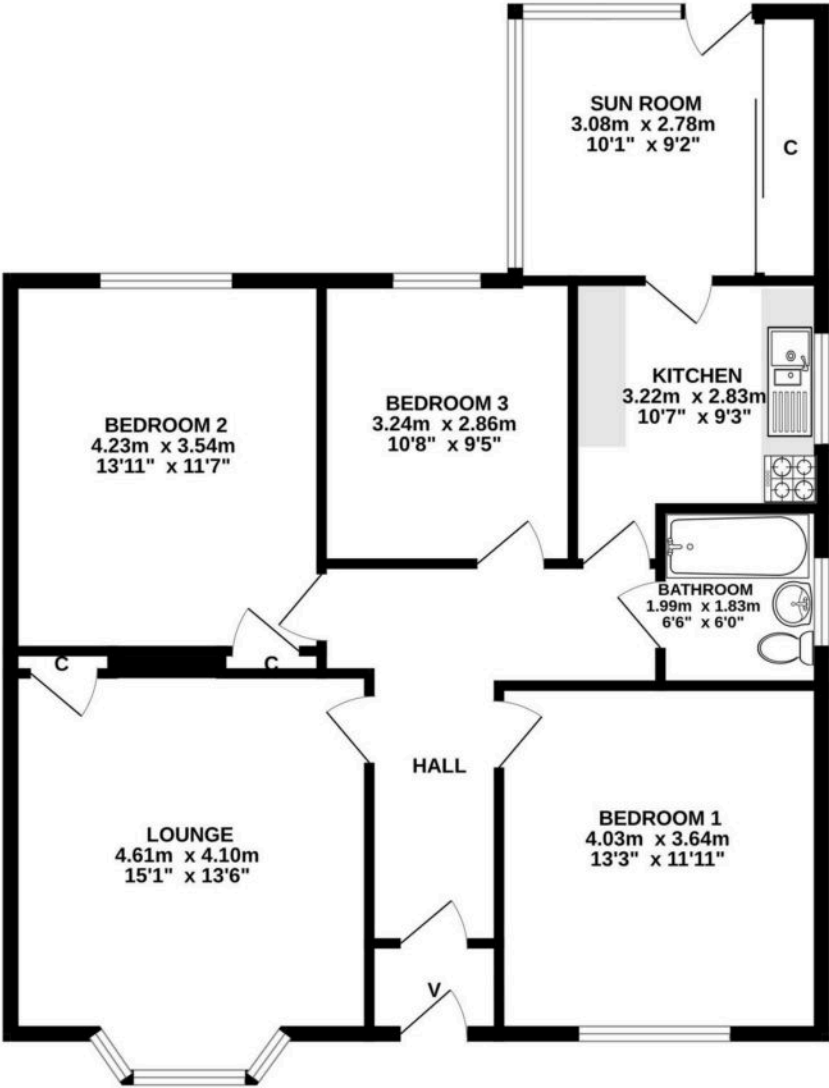








GROUND FLOOR



ALL SIZES TAKEN AT WIDEST POINTS

Whilst every attempt has been made to ensure the accuracy of the floorplan contained here, measurements of doors, windows, rooms and any other items are approximate and no responsibility is taken for any error, omission or mis-statement. This plan is for illustrative purposes only and should be used as such by any prospective purchaser. The services, systems and appliances shown have not been tested and no guarantee as to their operability or efficiency can be given.  
Made with Metropix ©2025





## Donald Ross Residential Irvine

Donald Ross Estate Agents, 9B Riverway Retail Park Riverway – KA12 8AG

01294 446788 • [irvine@donaldross.co.uk](mailto:irvine@donaldross.co.uk) • [www.donaldross.co.uk](http://www.donaldross.co.uk)

While every effort has been made to ensure accuracy, buyers should independently verify all details and review the Home Report before submitting an offer. No warranty or representation is given regarding the property, and neither the agent nor the seller accepts responsibility for any inaccuracies. Buyers must satisfy themselves on all legal aspects.