



## 3 Sanda Place, Saltcoats

In Excess of £110,000

DONALD  
**ROSS**  
RESIDENTIAL





### 3 Sanda Place

Saltcoats, Saltcoats

Donald Ross Residential is delighted to present this beautifully maintained three bedroom semi detached villa, ideally located within walking distance of local amenities.

Council Tax band: C

Tenure: Freehold

EPC Energy Efficiency Rating: D

EPC Environmental Impact Rating:

- Hallway
- Spacious Lounge
- contemporary Kitchen
- Three Bedrooms
- Family Bathroom
- Gas Central Heating & Double Glazed
- Front & Rear Gardens
- Multi Car Driveway
- Quiet Cul De Sac Location
- Walking Distance to Local Amenities & Local Schools



































































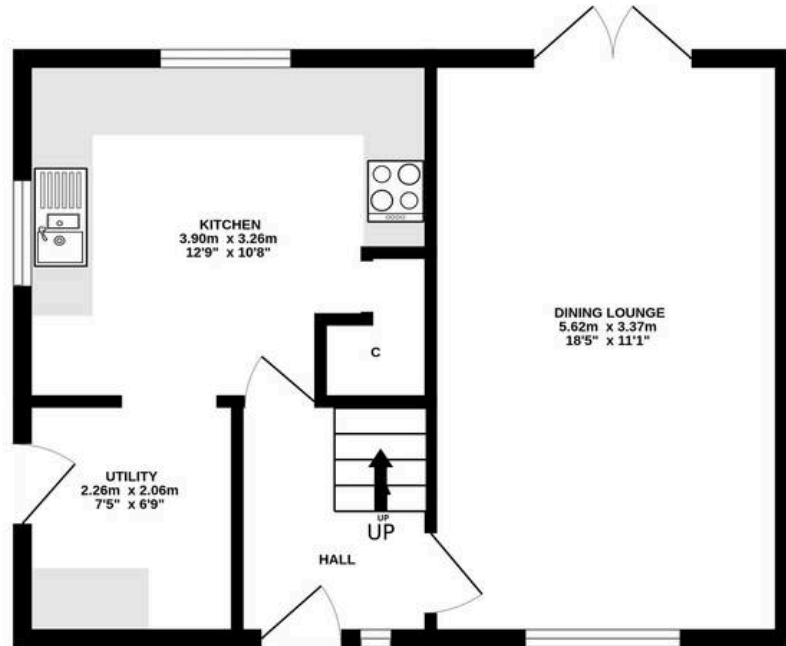




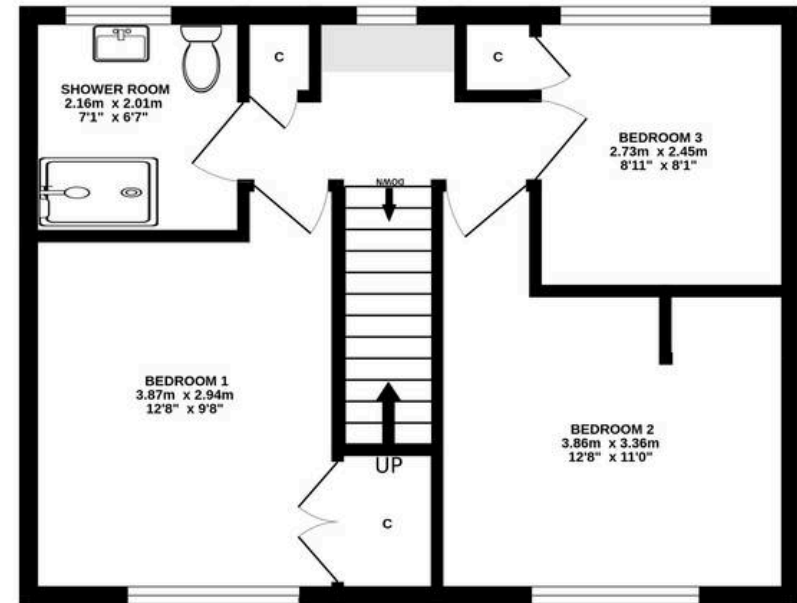




GROUND FLOOR



1ST FLOOR



ALL MEASUREMENTS TAKEN AT WIDEST POINT.

Whilst every attempt has been made to ensure the accuracy of the floorplan contained here, measurements of doors, windows, rooms and any other items are approximate and no responsibility is taken for any error, omission or mis-statement. This plan is for illustrative purposes only and should be used as such by any prospective purchaser. The services, systems and appliances shown have not been tested and no guarantee as to their operability or efficiency can be given.  
Made with Metropix ©2025





## Donald Ross Residential Irvine

Donald Ross Estate Agents, 9B Riverway Retail Park Riverway – KA12 8AG

01294 446788 • [irvine@donaldross.co.uk](mailto:irvine@donaldross.co.uk) • [www.donaldross.co.uk](http://www.donaldross.co.uk)

While every effort has been made to ensure accuracy, buyers should independently verify all details and review the Home Report before submitting an offer. No warranty or representation is given regarding the property, and neither the agent nor the seller accepts responsibility for any inaccuracies. Buyers must satisfy themselves on all legal aspects.