



77 Stevenston Road, Kilwinning

In Excess of £320,000

DONALD
ROSS
RESIDENTIAL



77 Stevenston Road

Kilwinning, Kilwinning

Donald Ross are delighted to present to the market this stunning five bedroom extended bungalow on a generous south facing plot in the prime location of Kilwinning.

Council Tax band: F

Tenure: Freehold

EPC Energy Efficiency Rating: B

EPC Environmental Impact Rating:

- Spacious Detached Bungalow
- Large Open-plan Kitchen, Family Room and Dining Area
- Five Spacious Bedrooms
- Spacious Lounge to the Front
- Four Piece Family Bathroom, Shower Room and Utility Room
- Small Office
- Extensive South Facing Gardens
- Extended Layout Offering Versatile Living Space
- Ample Off-street Parking for Multiple Vehicles
- Walking Distance to Train Station, Town Centre, and Local Schools







































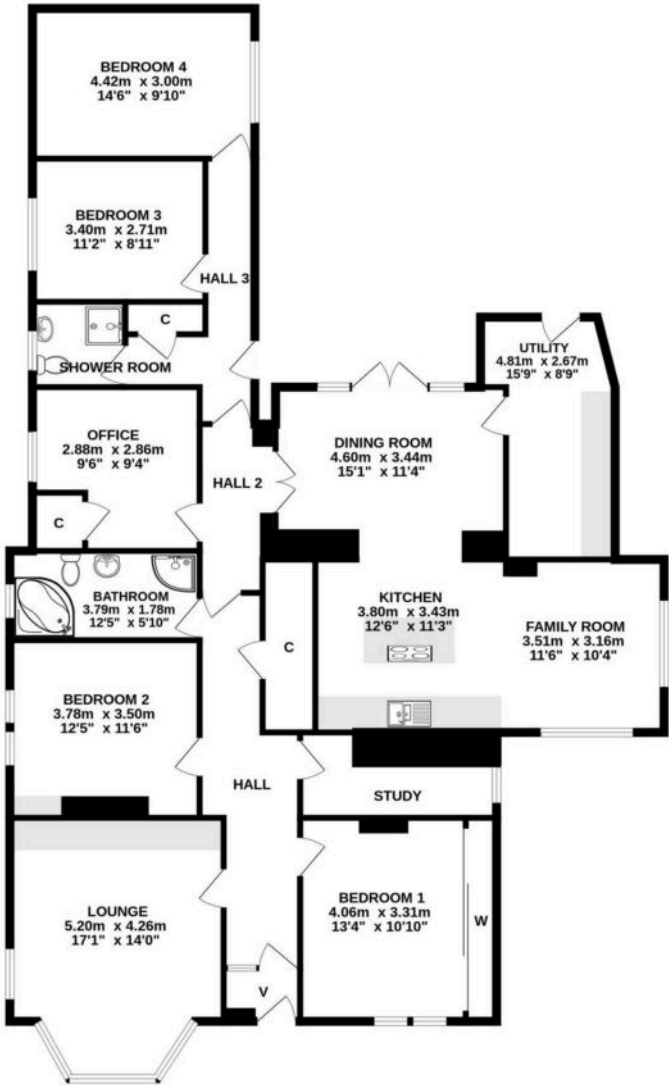








GROUND FLOOR



ALL MEASUREMENTS TAKEN AT WIDEST POINT.

Whilst every attempt has been made to ensure the accuracy of the floorplan contained here, measurements of doors, windows, rooms and any other items are approximate and no responsibility is taken for any error, omission or mis-statement. This plan is for illustrative purposes only and should be used as such by any prospective purchaser. The services, systems and appliances shown have not been tested and no guarantee as to their operability or efficiency can be given.
Made with Metropix ©2025



Donald Ross Residential Irvine

Donald Ross Estate Agents, 9B Riverway Retail Park Riverway – KA12 8AG

01294 446788 • irvine@donaldross.co.uk • www.donaldross.co.uk

While every effort has been made to ensure accuracy, buyers should independently verify all details and review the Home Report before submitting an offer. No warranty or representation is given regarding the property, and neither the agent nor the seller accepts responsibility for any inaccuracies. Buyers must satisfy themselves on all legal aspects.