



15 Craven Grove, Stanecastle

In Excess of £295,000

DONALD
ROSS
RESIDENTIAL



15 Craven Grove

Stanecastle, Irvine

Donald Ross present to the market this immaculate four bedroom detached villa nestled in a peaceful and sought after area of Irvine, this exceptional four bedroom detached villa offers an outstanding blend of space, style, and privacy.

Council Tax band: F

Tenure: Freehold

- Stunning Detached Villa offering Excellent Privacy
- Reception Hallway
- Spacious Lounge with Patio Doors into Sunroom
- Contemporary kitchen with Centre Island
- Bright and Airy Sunroom with Garden Views
- Four Spacious Bedrooms
- Family Bathroom, En-suite, Downstairs WC
- Quiet and Desirable Location in Irvine
- Generous Plot with Mature, Private Gardens
- Multi Car Driveway





































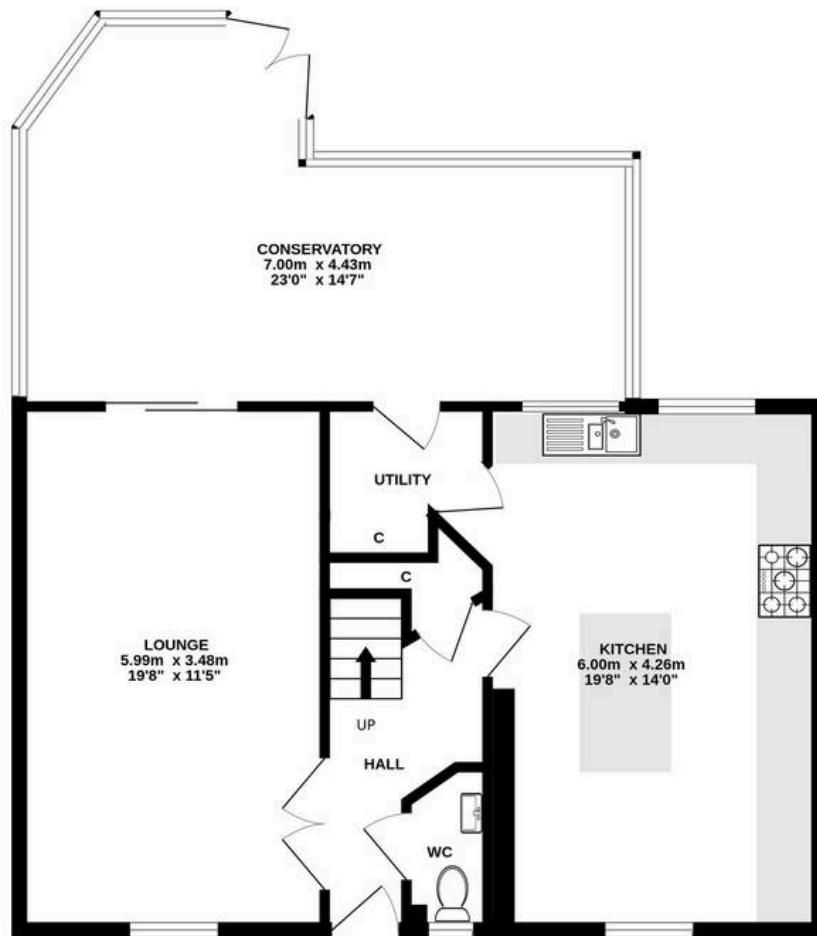




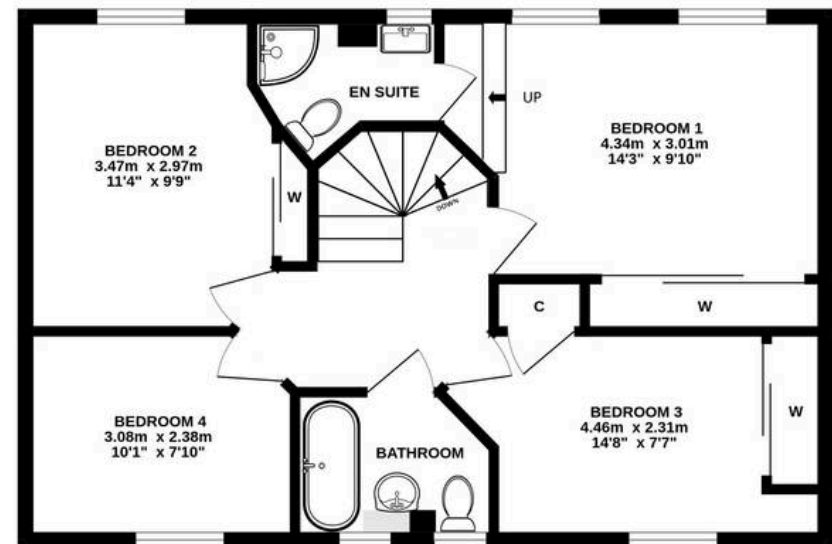




GROUND FLOOR



1ST FLOOR



ALL MEASUREMENTS TAKEN AT WIDEST POINT.

Whilst every attempt has been made to ensure the accuracy of the floorplan contained here, measurements of doors, windows, rooms and any other items are approximate and no responsibility is taken for any error, omission or mis-statement. This plan is for illustrative purposes only and should be used as such by any prospective purchaser. The services, systems and appliances shown have not been tested and no guarantee as to their operability or efficiency can be given.
Made with Metropix ©2025



Donald Ross Residential Irvine

Donald Ross Estate Agents, 9B Riverway Retail Park Riverway – KA12 8AG

01294 446788 • irvine@donaldross.co.uk • www.donaldross.co.uk

While every effort has been made to ensure accuracy, buyers should independently verify all details and review the Home Report before submitting an offer. No warranty or representation is given regarding the property, and neither the agent nor the seller accepts responsibility for any inaccuracies. Buyers must satisfy themselves on all legal aspects.