



7 Swan Mews, Eglinton, Kilwinning KA13 7QE

Fixed Price £390,000

DONALD
ROSS
RESIDENTIAL



7 Swan Mews

Eglinton, Kilwinning

Luxury 4-bed villas by Harrison Weir Homes in Eglinton Country Park, North Ayrshire. Spacious living area, modern kitchen, en-suite master bedroom, family-friendly features, ample parking and garden space. Highly desirable location with limited availability - contact us to view and secure your dream home.

Council Tax band: F

Tenure: Freehold

- Welcoming Entrance Hall
- Formal Lounge
- Kitchen & Utility room & downstairs WC
- Family Room (5th Bedroom)
- Four Double Bedrooms
- En-suite Shower Room
- Bathroom (Bath With Separate Shower)
- Large Garage & Extensive Garden Grounds
- 10 Year Guarantee with Build Warranty
www.buildwarranty.co.uk
- Estimated date of completion September 2025

























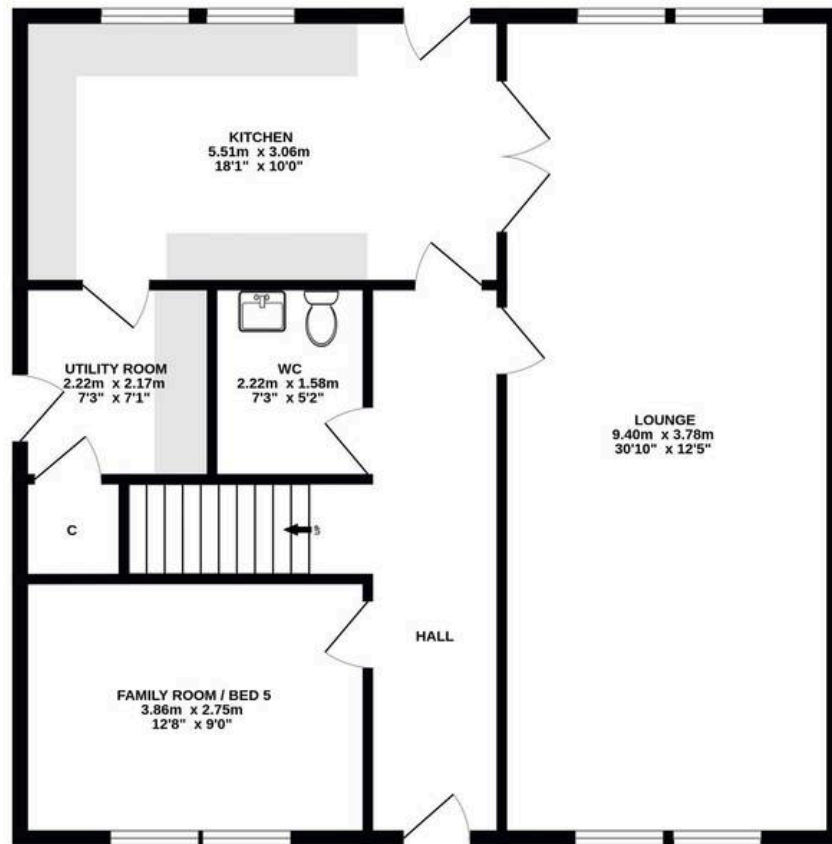




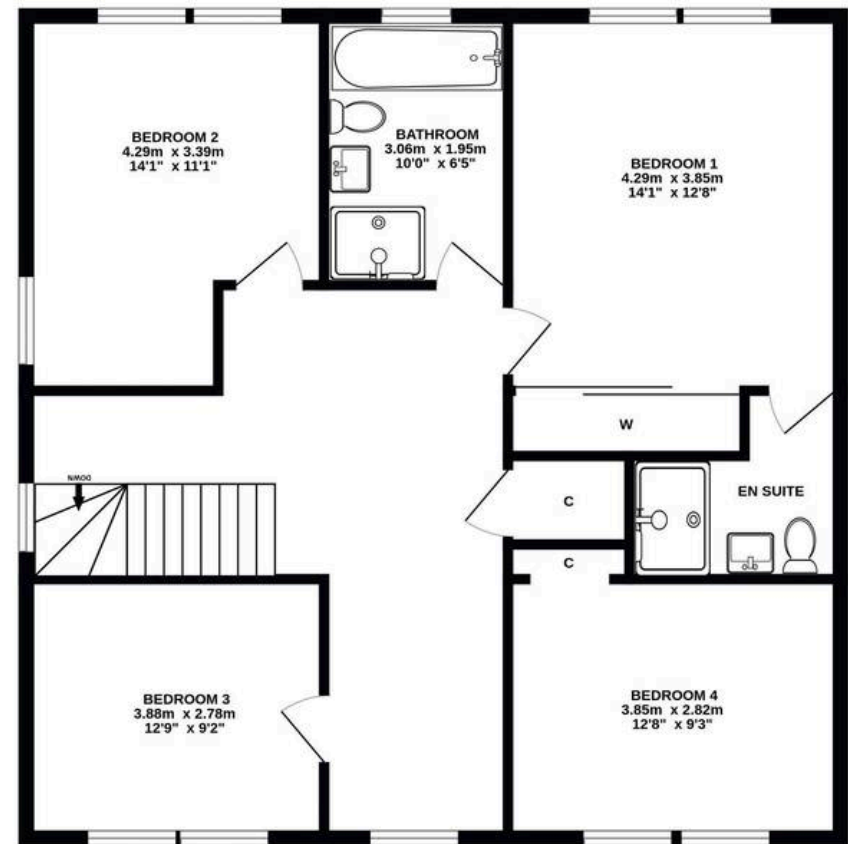




GROUND FLOOR

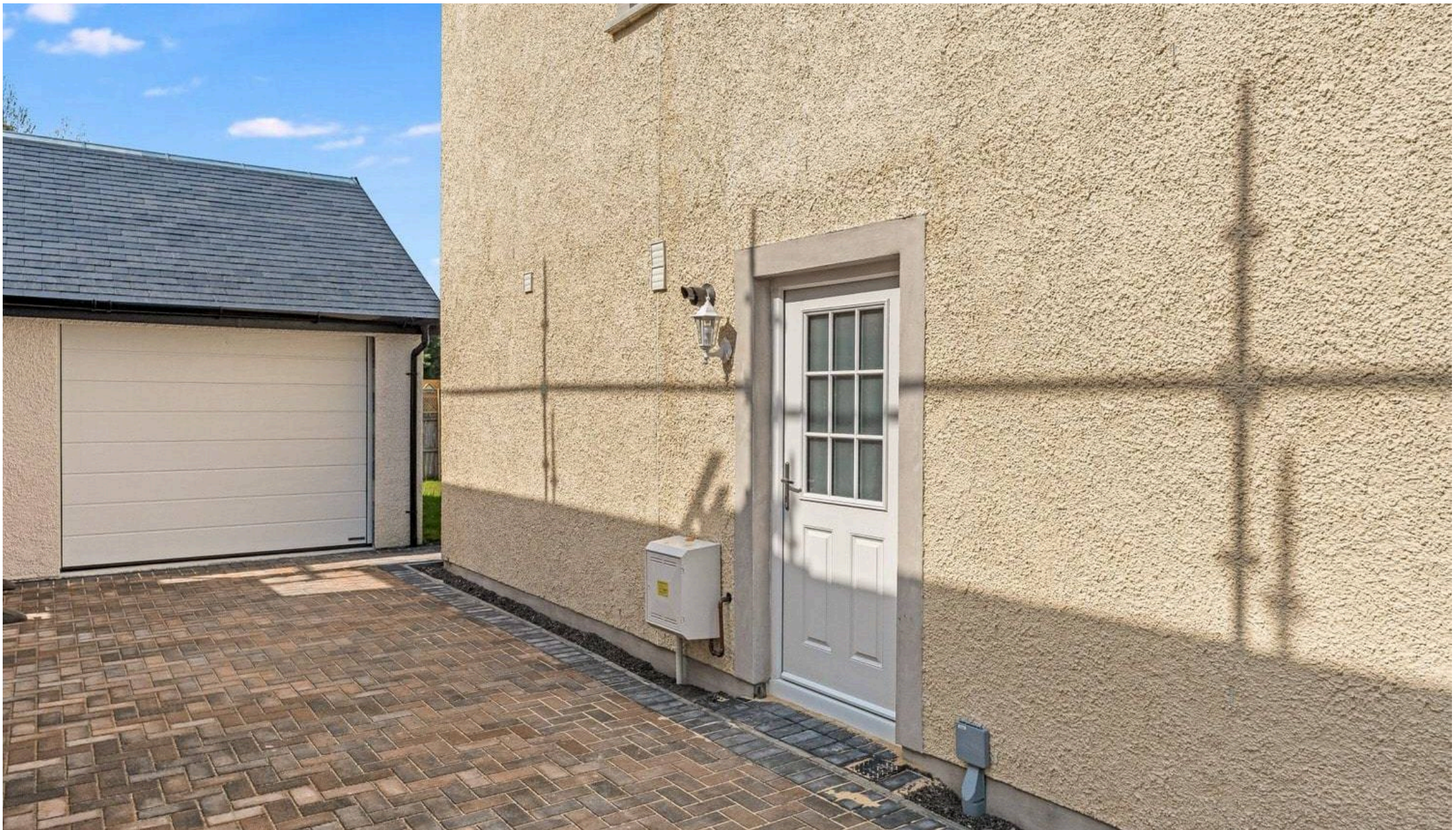


1ST FLOOR



ALL SIZES TAKEN AT WIDEST POINTS

Whilst every attempt has been made to ensure the accuracy of the floorplan contained here, measurements of doors, windows, rooms and any other items are approximate and no responsibility is taken for any error, omission or mis-statement. This plan is for illustrative purposes only and should be used as such by any prospective purchaser. The services, systems and appliances shown have not been tested and no guarantee as to their operability or efficiency can be given.
Made with Metropix ©2023



Donald Ross Residential Irvine

Donald Ross Estate Agents, 9B Riverway Retail Park Riverway – KA12 8AG

01294 446788 • irvine@donaldross.co.uk • www.donaldross.co.uk

While every effort has been made to ensure accuracy, buyers should independently verify all details and review the Home Report before submitting an offer. No warranty or representation is given regarding the property, and neither the agent nor the seller accepts responsibility for any inaccuracies. Buyers must satisfy themselves on all legal aspects.