



For Sale:

4 Bedroom
Detached Villa

Fixed Price £360,000

24
Swan Mews
Kilwinning
KA13 7QE

For more information contact:

01294 44 67 88
irvine@donaldross.co.uk



www.donaldross.co.uk





24, Swan Mews, Kilwinning, KA13 7QE

Introducing an exquisite opportunity to own a luxurious four or five-bedroom newbuild detached villa with generously proportioned accommodation, nestled in the prestigious Eglinton Country Park near Irvine. This exclusive home offers a rare blend of elegance and modernity in a highly sought-after location.

- Welcoming Entrance Hall
- Formal Lounge
- Family Room (5th Bedroom)
- Kitchen
- Utility room & downstairs WC
- Four Double Bedrooms
- Bathroom Bath With Separate Shower
- En-suite Shower Room
- Large Garage & Extensive Garden Grounds
- 10 Year Guarantee with Build Warranty www.buildwarranty.co.uk

Council Tax
Band

Energy Efficiency Rating
Band

Viewing
Is by appointment only which can be
arranged by contacting us on:

Tel: 01294 44 67 88
Email: irvine@donaldross.co.uk

Mon to Fri: 9am – 5:30pm
Sat: 10am – 2pm
Sun: 10am – 2pm

Fixed Price £360,000























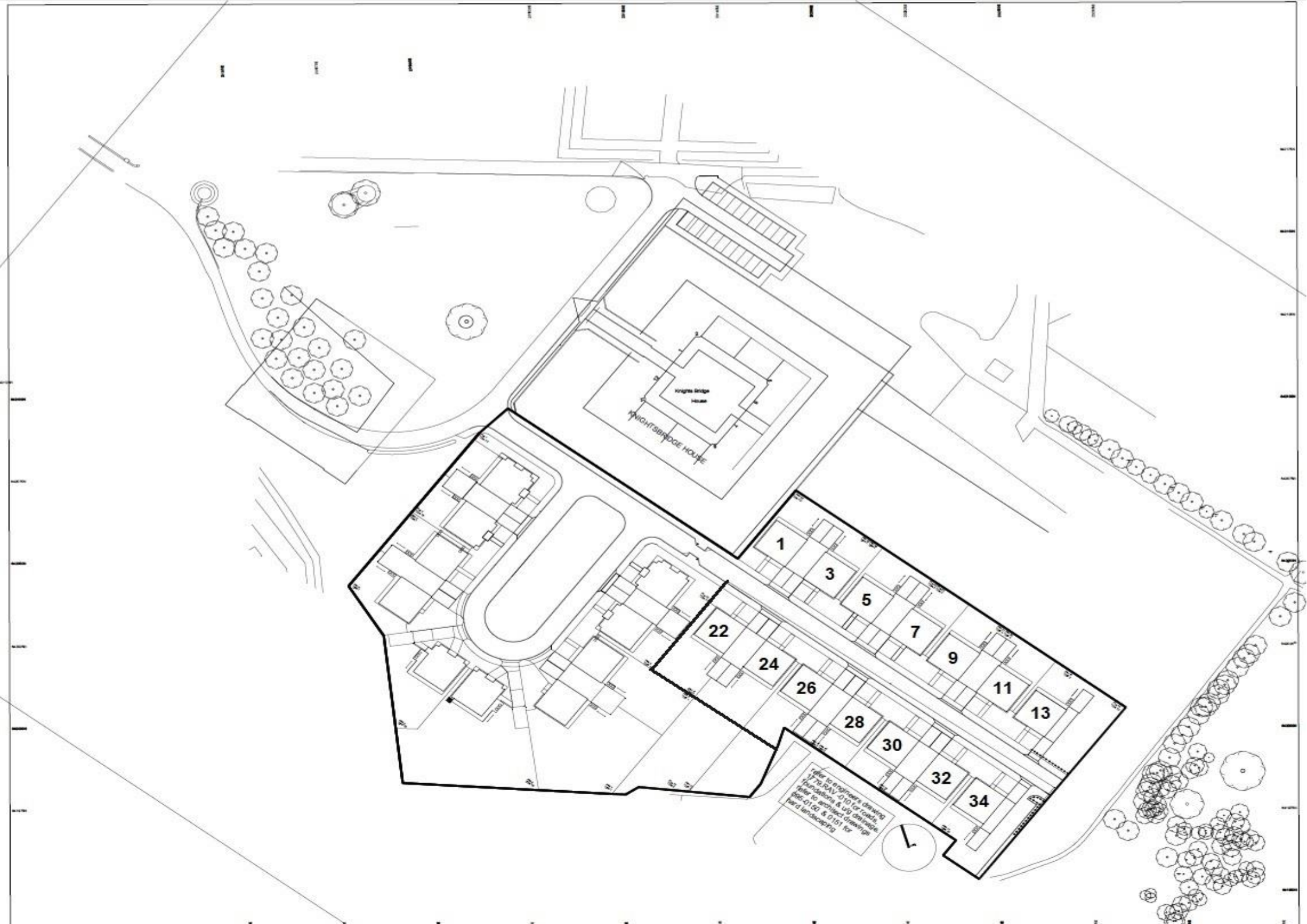












Knightbridge House
KNIIGHTBRIDGE HOUSE

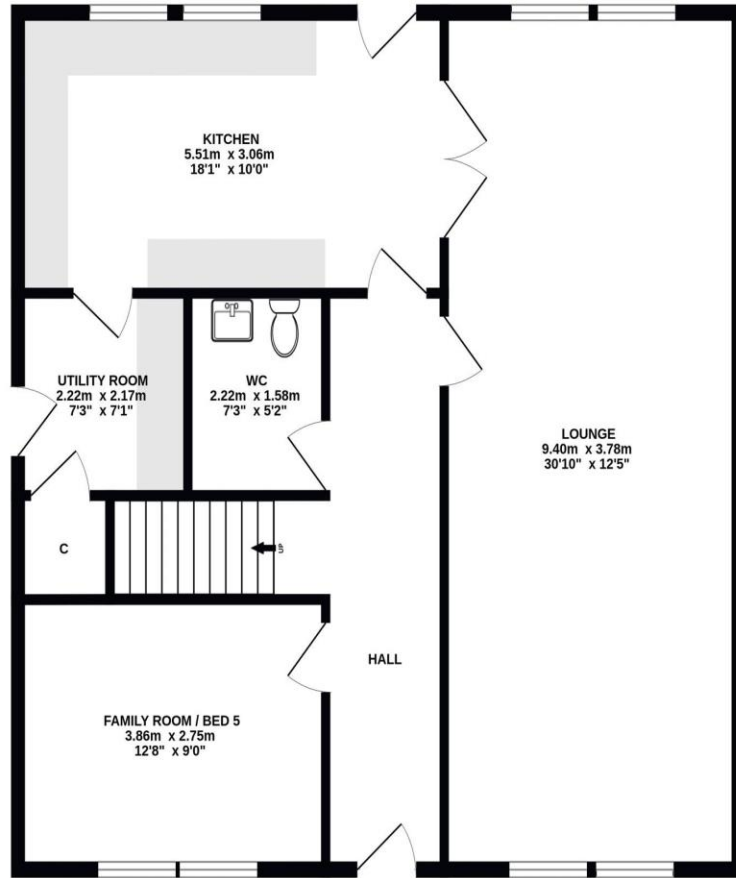
- 1
- 3
- 5
- 7
- 9
- 11
- 13
- 22
- 24
- 26
- 28
- 30
- 32
- 34

Refer to engineer's drawing
1770 RAV 010 for roads,
foundations & utility drainage,
Refer to architect's drawing
RAC-0100 & 0101 for
hard landscaping

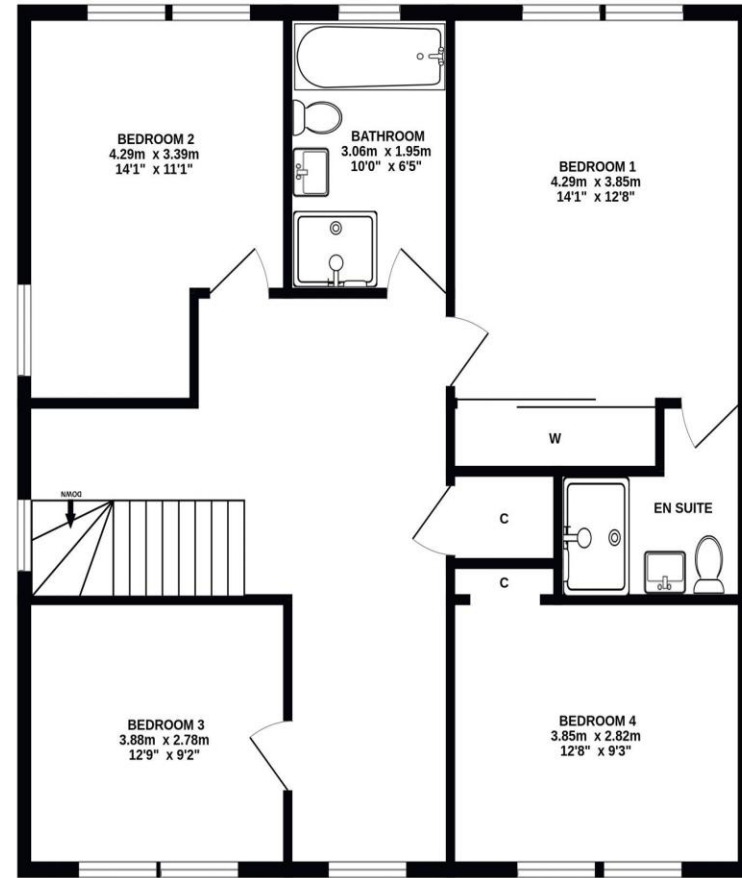


Gross Internal Floor Size 175 m²

GROUND FLOOR



1ST FLOOR



ALL SIZES TAKEN AT WIDEST POINTS

Whilst every attempt has been made to ensure the accuracy of the floorplan contained here, measurements of doors, windows, rooms and any other items are approximate and no responsibility is taken for any error, omission or mis-statement. This plan is for illustrative purposes only and should be used as such by any prospective purchaser. The services, systems and appliances shown have not been tested and no guarantee as to their operability or efficiency can be given.

Made with Metropix ©2023

Donald Ross Residential, unlike most estate agents who are part of a franchise group or PLC, are privately owned and completely independent. Independence allows us to offer our clients a genuinely personal service geared solely towards the very best advice and assistance when selling your home. Donald Ross Residential was formed in 1985 and is one of Ayrshire's longest established estate agents. With a highly qualified and experienced team, Donald Ross Residential is the Estate Agent of choice when you are considering buying or selling your home. Donald Ross Residential is proud to be members of The Property Ombudsman for Estate Agents.

We have done everything possible to ensure that the details included in this property schedule were correct at the time of going to print. Donald Ross will not be held liable for errors or omissions in this property schedule. We recommend that all home buyers view the home report before committing to purchase a property. ©2009 Donald Ross. All rights reserved.



9b, Irvine KA12 8AG
Tel: 01294 44 67 88
Email: irvine@donaldross.co.uk
www.donaldross.co.uk

Donald Ross Estate Agents Limited,
Registered in Scotland No.SC290184
Directors: Jacqueline Miller, Fraser Stewart.

www.donaldross.co.uk

