



For Sale:

3 Bedroom
Detached Bungalow

Offers in Excess of £250,000

5
The Grange
Irvine
KA11 2EU

For more information contact:

01294 44 67 88
irvine@donaldross.co.uk



www.donaldross.co.uk





5, The Grange, Irvine, KA11 2EU

Donald Ross are delighted to present to the market this charming three bedroom detached bungalow featuring a cozy lounge, separate dining room and delightful conservatory.

- Peaceful Neighbourhood Setting
- Hallway
- Cozy Lounge
- Kitchen with Utility Room
- Dining Room leading through to Conservatory
- Two Double Bedrooms (one with en-suite)
- Bathroom
- Double Driveway with Garage
- South Facing Peaceful Rear Gardens
- Located within Perceton's most sought after Location

Council Tax
Band E

Energy Efficiency Rating
Band C

Viewing
Is by appointment only which can be
arranged by contacting us on:

Tel: 01294 44 67 88
Email: irvine@donaldross.co.uk

Mon to Fri: 9am – 5:30pm
Sat: 10am – 2pm
Sun: 10am – 2pm

Offers in Excess of £250,000



www.donaldross.co.uk | 01294 44 67 88 | irvine@donaldross.co.uk









The kitchen features white, shaker-style cabinets with silver handles. The countertop is a dark, speckled granite. On the left, there is a stainless steel sink with a chrome faucet. To the right of the sink is a stainless steel electric kettle and a toaster. Further right is a four-burner gas cooktop with a stainless steel oven below it. The backsplash is made of light-colored, square tiles with a subtle pattern. A window with white blinds is located above the door.

The dining area is located to the right of the kitchen. It features a round glass table with a chrome frame and four matching chairs. The chairs have black seats and green patterned cushions. A bowl of bananas sits on the table. The walls are tiled with light-colored, square tiles. A window with white blinds is located above the dining table. A door with a window is visible in the background.





















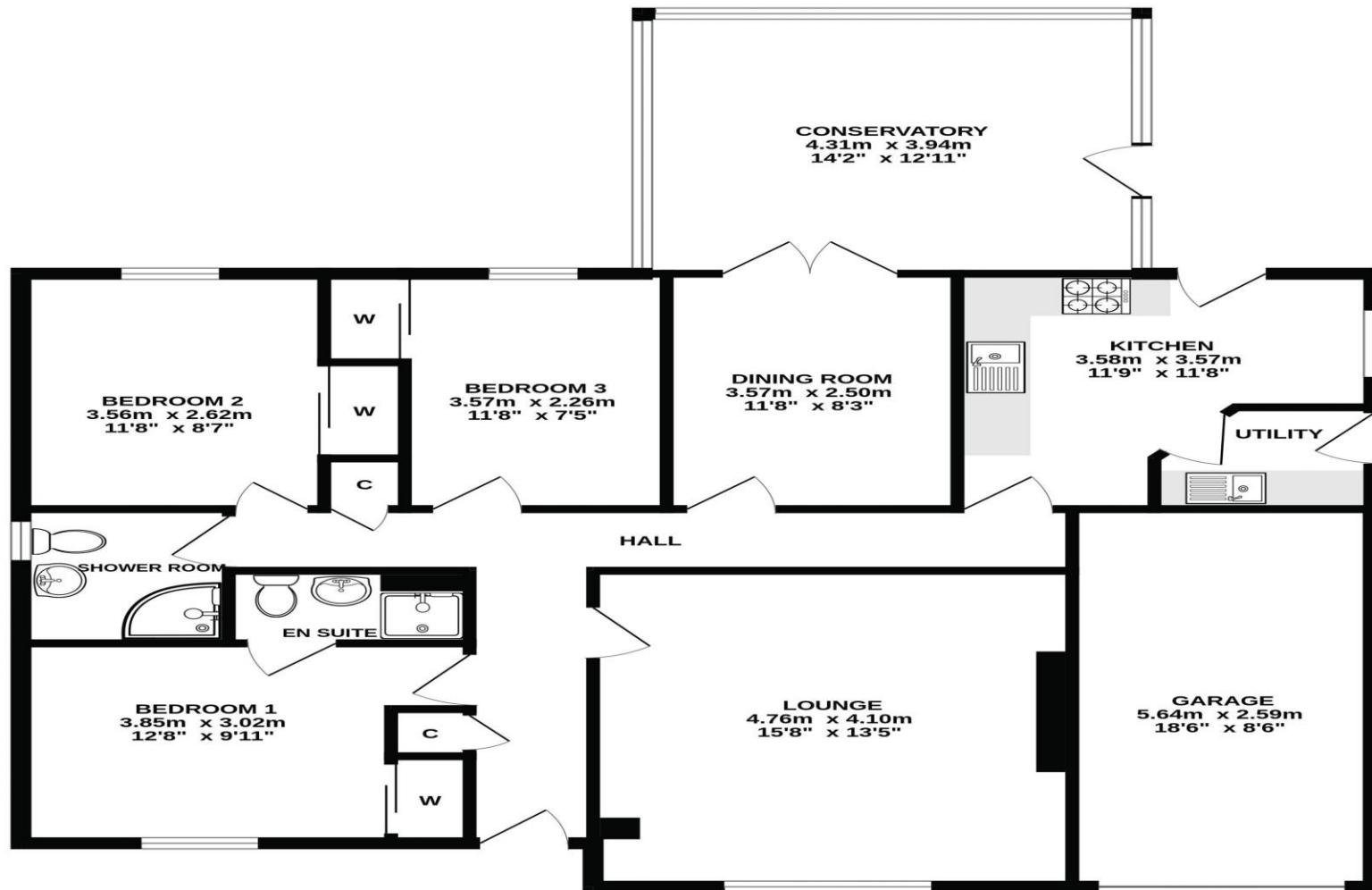


5



Gross Internal Floor Size 108 m²

GROUND FLOOR



ALL MEASUREMENTS TAKEN AT WIDEST POINT.

Whilst every attempt has been made to ensure the accuracy of the floorplan contained here, measurements of doors, windows, rooms and any other items are approximate and no responsibility is taken for any error, omission or mis-statement. This plan is for illustrative purposes only and should be used as such by any prospective purchaser. The services, systems and appliances shown have not been tested and no guarantee as to their operability or efficiency can be given.
Made with Metropix ©2024

Donald Ross Residential, unlike most estate agents who are part of a franchise group or PLC, are privately owned and completely independent. Independence allows us to offer our clients a genuinely personal service geared solely towards the very best advice and assistance when selling your home. Donald Ross Residential was formed in 1985 and is one of Ayrshire's longest established estate agents. With a highly qualified and experienced team, Donald Ross Residential is the Estate Agent of choice when you are considering buying or selling your home. Donald Ross Residential is proud to be members of The Property Ombudsman for Estate Agents.

We have done everything possible to ensure that the details included in this property schedule were correct at the time of going to print. Donald Ross will not be held liable for errors or omissions in this property schedule. We recommend that all home buyers view the home report before committing to purchase a property. ©2009 Donald Ross. All rights reserved.



9b, Irvine KA12 8AG
Tel: 01294 44 67 88
Email: irvine@donaldross.co.uk
www.donaldross.co.uk

Donald Ross Estate Agents Limited,
Registered in Scotland No.SC290184
Directors: Jacqueline Miller, Fraser Stewart.

www.donaldross.co.uk

