

Abbey Heights



**The Keswick**  
Five bedroom detached house



# The Keswick

## Ground Floor

**Kitchen/Family/Diner**  
12.36m x 4.34m (max)

**Lounge**  
3.64m x 6.17m (max)

**Utility**  
1.64m x 2.55m

**Garage**  
4.56m x 5.25m



## First Floor

**Master Bedroom**  
3.62m x 4.17m

**Dressing Area**  
1.58m x 1.90m (max)

**En-Suite**  
2.13m x 2.66m (max)

**Bedroom 2**  
4.77m x 3.49m (max)

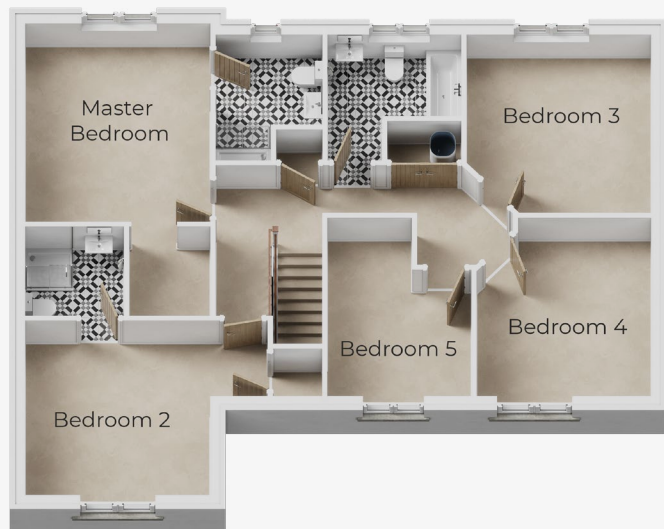
**En-Suite 2**  
1.92m x 1.90m

**Bedroom 3**  
3.65m x 3.77m (max)

**Bedroom 4**  
3.45m x 4.05m (max)

**Bedroom 5**  
2.83m x 4.05m (max)

**Bathroom**  
2.39m x 2.63m (max)



Tel: 07824 160 634 / 01539 560 605  
Dalton Lane, Barrow-in-Furness LA14 4PZ  
oakmerhomes.co.uk

  
**Oakmere**<sup>®</sup>  
CREATING QUALITY HOMES

The images shown are for illustration purposes only. Whilst every care is taken to ensure accuracy of information contained in this brochure, we cannot take responsibility for any error or misdescription and we reserve the right to alter or amend designs and specifications without prior notice. The information contained herein is for guidance only and does not form part of any contract or warranty. External finishes may vary from those shown and any dimensions given are approximate and sizes may vary from those indicated. Properties may be built handed (mirror image). External materials, landscaping, garage and window positions may vary to suit the location of individual homes. Elevational treatments may vary to those shown, please speak to our New Homes Advisor for the details regarding individual plot specifications.