

# Medburn Park



## *The Milbourne*

The Milbourne is a luxury 5 bedroom detached house with detached double garage. With its central staircase the hall leads to a square shaped lounge, a large dining room, a study, a large kitchen/family room and a separate utility room.

The landing is vaulted over the entrance hall which creates a sense of light and space. The bedrooms are all of a generous size with two en-suite shower rooms and a family bathroom. The Milbourne is a very well balanced double fronted family home offering space and attractive features.

---

# Medburn

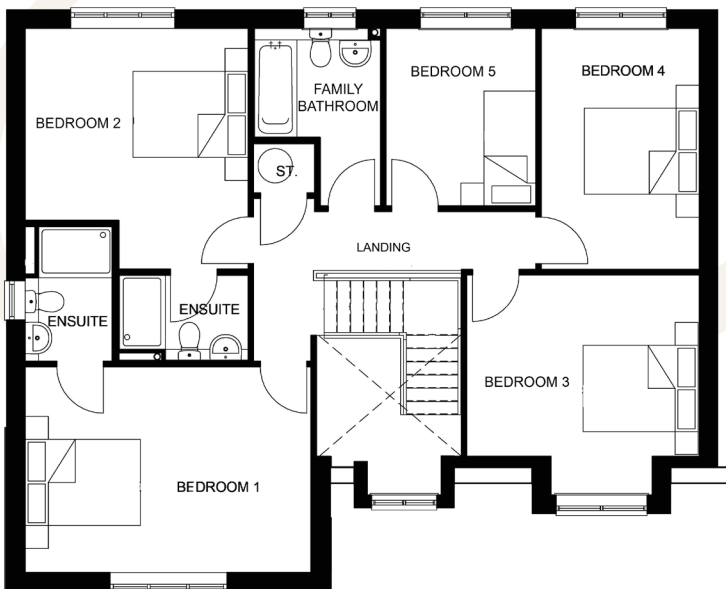
HOMES

# 2,290 sq ft - 5 Bedroom

Dimensions and images are indicative and for illustrative purposes only

## Ground Floor

	Metric	Feet & Inches
Lounge	5.42 x 5.27	17' 9" x 17' 3"
Dining Room	4.97 x 3.88 (max)	16' 4" x 12' 9" (max)
Study	2.98 x 4.50	9' 9" x 14' 9"
Kitchen/Family Room	6.16 x 4.15	20' 3" x 13' 7"
Utility Room	2.43 x 2.05	8' 0" x 6' 9"



## First Floor

	Metric	Feet & Inches
Bedroom 1	4.97 x 3.58	16' 4" x 11' 9"
Bedroom 2	3.88 x 4.19 (max)	12' 9" x 13' 9" (max)
Bedroom 3	4.02 x 3.83 (max)	13' 2" x 12' 7" (max)
Bedroom 4	2.75 x 4.20	9' 0" x 13' 9"
Bedroom 5	2.61 x 3.09	8' 7" x 10' 2"

W: [www.medburnhomes.co.uk](http://www.medburnhomes.co.uk)  
E: [sales@medburnhomes.co.uk](mailto:sales@medburnhomes.co.uk)

Medburn Park, Medburn Village, Ponteland  
Northumberland, NE20 0JE

*Medburn*  
HOMES