

Medburn Park



The Ingoe

The Ingoe is a handsome 5 bedroom detached house with double integral garage. Featuring a wide hallway the property has a substantial lounge, a study, an open plan kitchen/family room and a separate utility room.

The first floor has five bedrooms including a very impressive master bedroom suite, a useful "Jack and Jill" bathroom and a further family bathroom. The accommodation of The Ingoe is versatile and spacious.

Medburn

HOMES

2,365 sq ft - 5 Bedroom

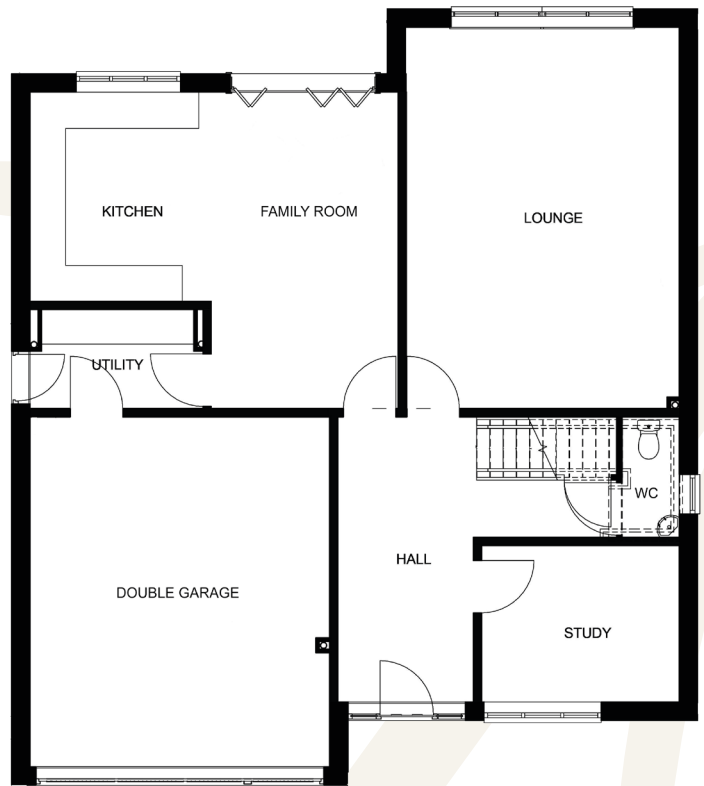
Dimensions and images are indicative and for illustrative purposes only

Ground Floor

Metric

Feet & Inches

Lounge	4.74 x 6.62	15' 7" x 21' 9"
Study	3.43 x 2.72	11' 3" x 8' 11"
Kitchen/Family Room	6.39 x 5.50 (max)	21' 0" x 18' 1" (max)
Utility Room	3.00 x 1.72	9' 10" x 5' 8"



First Floor

Metric

Feet & Inches

Bedroom 1	4.79 x 4.72 (min)	15' 9" x 15' 6" (min)
Bedroom 2	3.32 (min) x 4.21	10' 11" (min) x 13' 10"
Bedroom 3	4.10 (min) x 2.97	13' 5" (min) x 9' 9"
Bedroom 4	3.77 x 2.75	12' 4" x 9' 0"
Bedroom 5	2.99 x 3.12	9' 10" x 10' 3"

W: www.medburnhomes.co.uk
E: sales@medburnhomes.co.uk

Medburn Park, Medburn Village, Ponteland
Northumberland, NE20 0JE

Medburn
HOMES