



- Extended Property
- Viewings Essential
- Convenient Location
- Four Bedrooms

33 St. Francis Avenue, Solihull, B91 1EB

A BEAUTIFULLY PRESENTED family home which MUST BE VIEWED to appreciate the accommodation on offer. This EXTENDED property is ideally located for the boroughs excellent schools, Solihull town centre and its fantastic amenities to include the renowned Touchwood Shopping Centre, the Midlands motorway network and Birmingham International Airport.





## Property Description

### DETAILS

This family home simply must be viewed to appreciate the décor and substantial accommodation on offer which in brief affords porch, entrance hallway, guest cloakroom, open plan lounge/dining area and fitted kitchen with separate utility and conservatory.

To the first floor there are three double bedrooms, all with their own en-suite facilities and two benefiting from fitted wardrobes. The second floor has a stunning master bedroom with a range of fitted wardrobes and an en-suite shower room.

### OUTSIDE

The property benefits from a large driveway allowing the parking of several vehicles and a single garage. Whilst to the rear is a beautifully landscaped garden with decked and patio areas.

### VIEWINGS

At short notice with DM & Co. Homes on 0121 775 0101 or by email [sales@dmandcohomes.co.uk](mailto:sales@dmandcohomes.co.uk).







## GENERAL INFORMATION

Tenure: We are advised by the vendor that the property is Freehold with vacant possession upon completion. However, we would advise that you check this with your legal advisor before exchanging contracts.

Services: All mains services are connected to the property. However, it is advised that you confirm this at point of offer.

Local Authority: Solihull Metropolitan Borough Council.



## OTHER SERVICES

DM & Co are pleased to offer the following services:-

Residential Lettings: If you are considering renting a property or letting your property, please contact the office on 0121 775 0101.

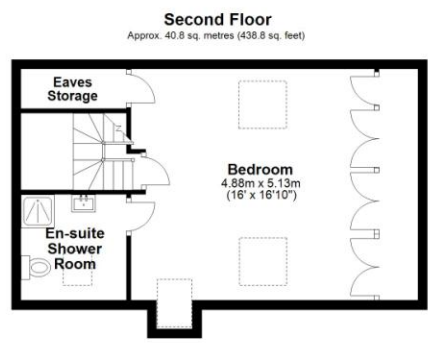
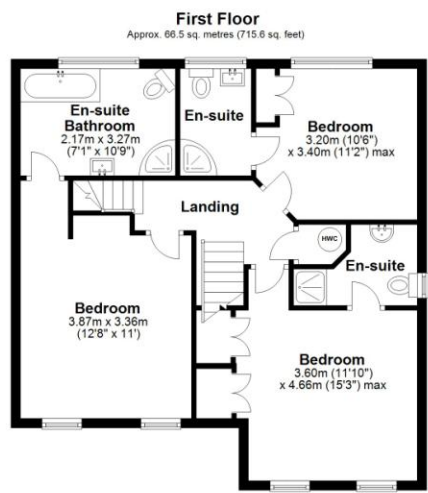
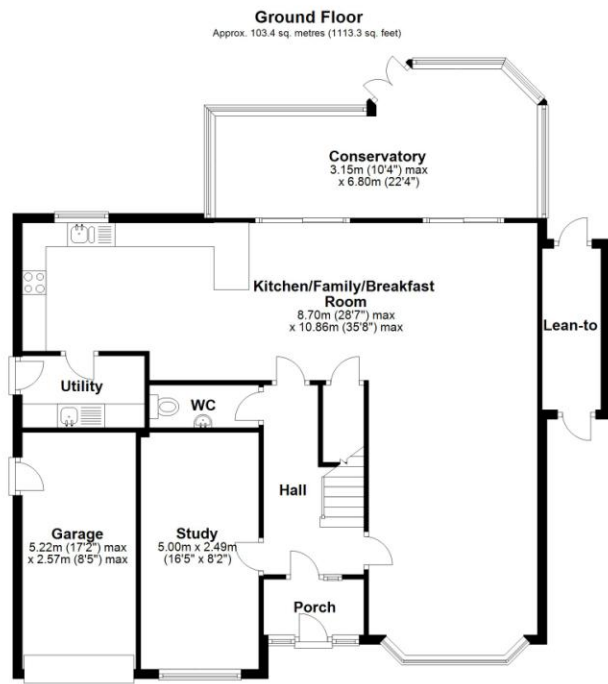
Mortgage Services: If you would like advice on the best mortgages available, please contact us on 0121 775 0101.



## WANT TO SELL YOUR PROPERTY?

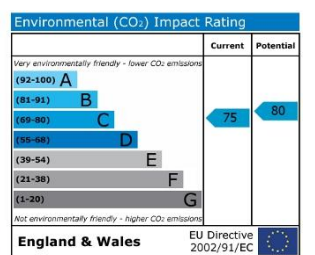
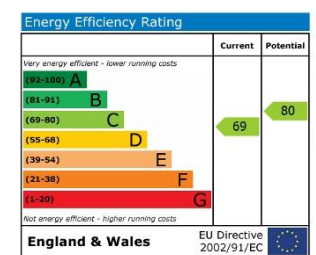
Call DM & Co. Homes on 0121 775 0101 to arrange your FREE no obligation market appraisal and find out why we are Solihull's fastest growing Estate Agency.

Agents Note: Whilst every care has been taken to prepare these sales particulars, they are for guidance purposes only. All measurements are approximate and are for general guidance purposes only and whilst every care has been taken to ensure their accuracy, they should not be relied upon and potential buyers are advised to recheck the measurements.



Total area: approx. 210.7 sq. metres (2267.7 sq. feet)

Please note this plan is for illustration purposes only, this is not intended to be a measured survey or comply with RICS guidelines. All measurements are approximate and should be checked by prospective buyers/tenants. No responsibility is taken for any error, omission, or mis-statement.  
Plan produced using PlanUp.



Call us now 0121 775 0101  
[www.dmandcohomes.co.uk](http://www.dmandcohomes.co.uk)  
[sales@dmandcohomes.co.uk](mailto:sales@dmandcohomes.co.uk)

