

Need a Mortgage in principle  
to make offers? Call us now  
for quick assistance!  
**0121 775 0101**



Do you need to sell?  
Start your journey now!  
Call us we can help.  
**0121 775 0101**



**SCAN FOR MORE INFO**  
**SIZE** - 946 Sq Ft  
**TENURE** - Freehold  
**COUNCIL TAX** - Birmingham City Council - B  
**BROADBAND** - Upload Max 220Mbps  
Download Max 1800Mbps  
**MOBILE** - EE Three O2 Vodafone  
**EPC** - D - 55  
**PARKING** - On Road Only  
**FLOODRISK** - Very Low  
**SERVICES** - Mains  
**COVENANTS** - N/A

Are you an investor  
interested in expanding your  
portfolio?

**Call 0121 775 0101 to provide your  
investment criteria for alerts.**

## The Avenue, Acocks Green

Acocks Green, B27

Situated on The Avenue in Acocks Green, this charming mid-terraced house, built in 1900, beautifully combines period character with modern living. This property is an excellent opportunity for those seeking a blend of historical charm and contemporary comfort in a desirable location.

### FEATURES

- Tastefully Presented Mid Terraced Property
- Bright and Airy Lounge
- Dining Room with Feature Fireplace
- Functional Kitchen with Space for Appliances
- Spacious Principal Bedroom
- Good Sized Second Bedroom
- Modern Family Bathroom
- Private Rear Garden
- Walking Distance to Acocks Green Train Station



SCAN TO **VIEW OUR**  
**WEEKLY FILMS &**  
**SUBSCRIBE**

### Sneak Peeks

Every week, we unveil "Sneak Peeks," a feature showcasing exclusive properties before they hit Rightmove and other platforms.

### The Landlord Club

Join our Landlord Club for weekly updates on legislation, market trends, and our Letting Director's 'Investment Pick of the Week' for optimal ROI.

### HTSPMD

Tune into 'How's The Solihull Property Market Dom' weekly for a quick, insightful snapshot of the market.

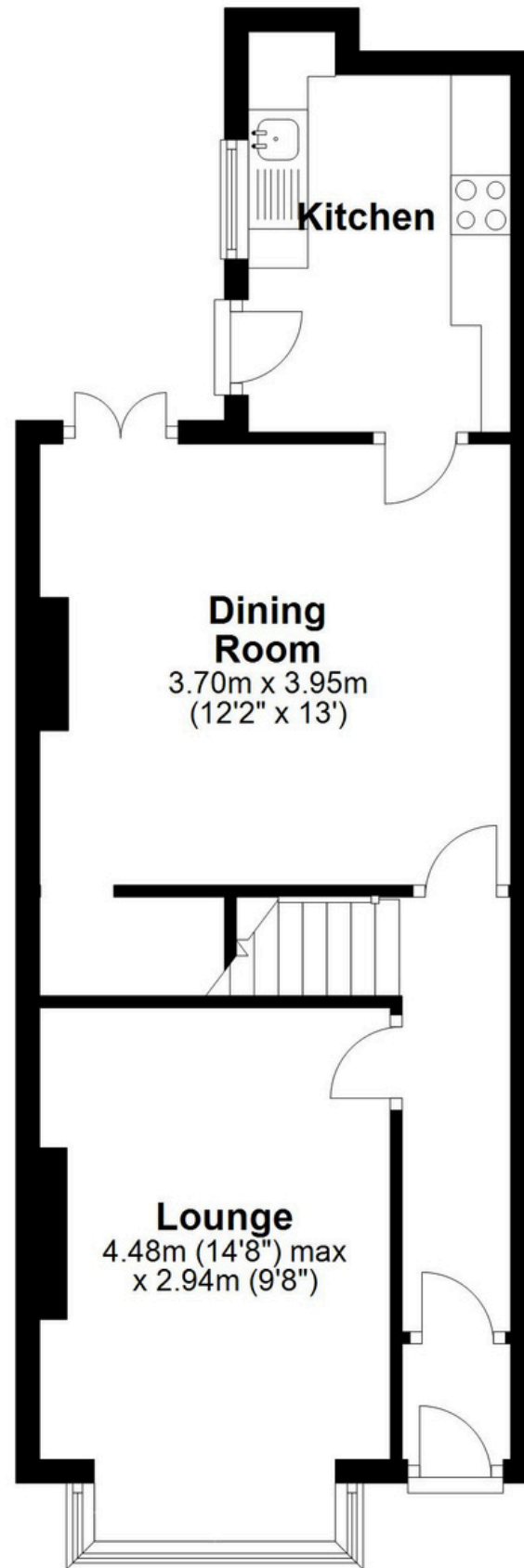
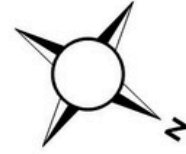
### The Mortgage Update

Get weekly insights and the best deals with our Mortgage Update, your shortcut to navigating the complex mortgage landscape confidently.



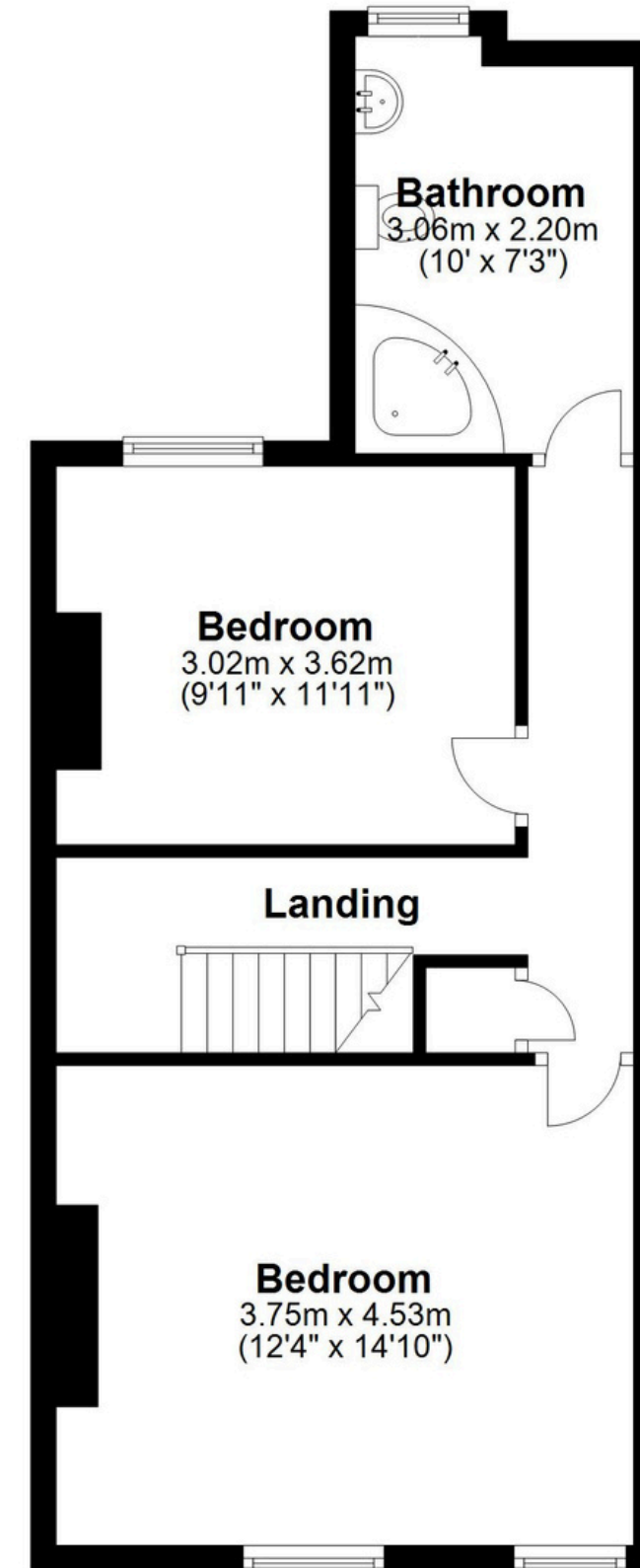
## Ground Floor

Approx. 42.1 sq. metres (453.5 sq. feet)



## First Floor

Approx. 45.8 sq. metres (493.4 sq. feet)



Total area: approx. 88.0 sq. metres (946.9 sq. feet)

This floor plan is for illustration purposes only, this is not intended to be a measured/scaled survey or comply with RICS guidelines. All measurements (including total floor area) openings, orientation and floor area are approximate. No details are guaranteed, they cannot be relied upon for any purpose and do not form part of any agreement. A party must rely upon its own inspection(s). No responsibility is taken for any error, omission, or mis-statement.

Plan produced using PlanUp.