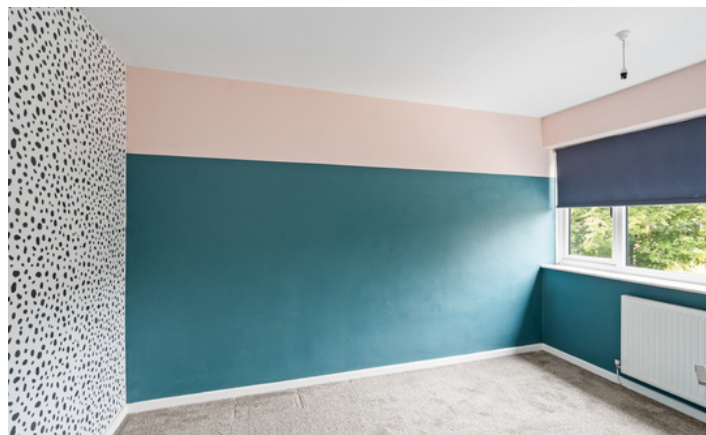


Need a Mortgage in principle to make offers? Call us now for quick assistance!
0121 775 0101



Do you need to sell? Start your journey now! Call us we can help.
01564 777 314



SCAN FOR MORE INFO
SIZE - 1030 Sq Ft
TENURE - Freehold
COUNCIL TAX - Solihull Metropolitan Borough Council C
BROADBAND - Upload Max 220 Mbps
Download Max 1000 Mbps
MOBILE - EE, O2, Vodaphone
EPC - D
PARKING - Driveway Parking
FLOODRISK - No Risk
SERVICES - Mains
COVENANTS - N/A

Are you an investor interested in expanding your portfolio?

Call 01564 777 314 to provide your investment criteria for alerts.

2641 Stratford Road

Purchase Price £390,000

2641 Stratford Road is a well-appointed, three bedroom, semi-detached house featuring a beautiful private garden and the potential to extend, subject to planning permission. Ideally situated in the heart of Hockley Heath village, this property offers easy access to local amenities and is sold with no upward chain.

FEATURES

- Three Bedroom Semi-detached House
- Spacious Through Lounge with Log Burner
- Modern Breakfast Kitchen
- Bright & Airy Bedrooms
- Good Size Private Garden with Canal Views
- Garage Conversion for Additional Living Space
- Large Pebbled Driveway with Ample Parking
- Village Location in Hockley Heath
- NO UPWARD CHAIN

Sneak Peeks

Every week, we unveil "Sneak Peeks," a feature showcasing exclusive properties before they hit Rightmove and other platforms.

The Landlord Club

Join our Landlord Club for weekly updates on legislation, market trends, and our Letting Director's 'Investment Pick of the Week' for optimal ROI.

HTSPMD

Tune into 'How's The Solihull Property Market Dom' weekly for a quick, insightful snapshot of the market.

The Mortgage Update

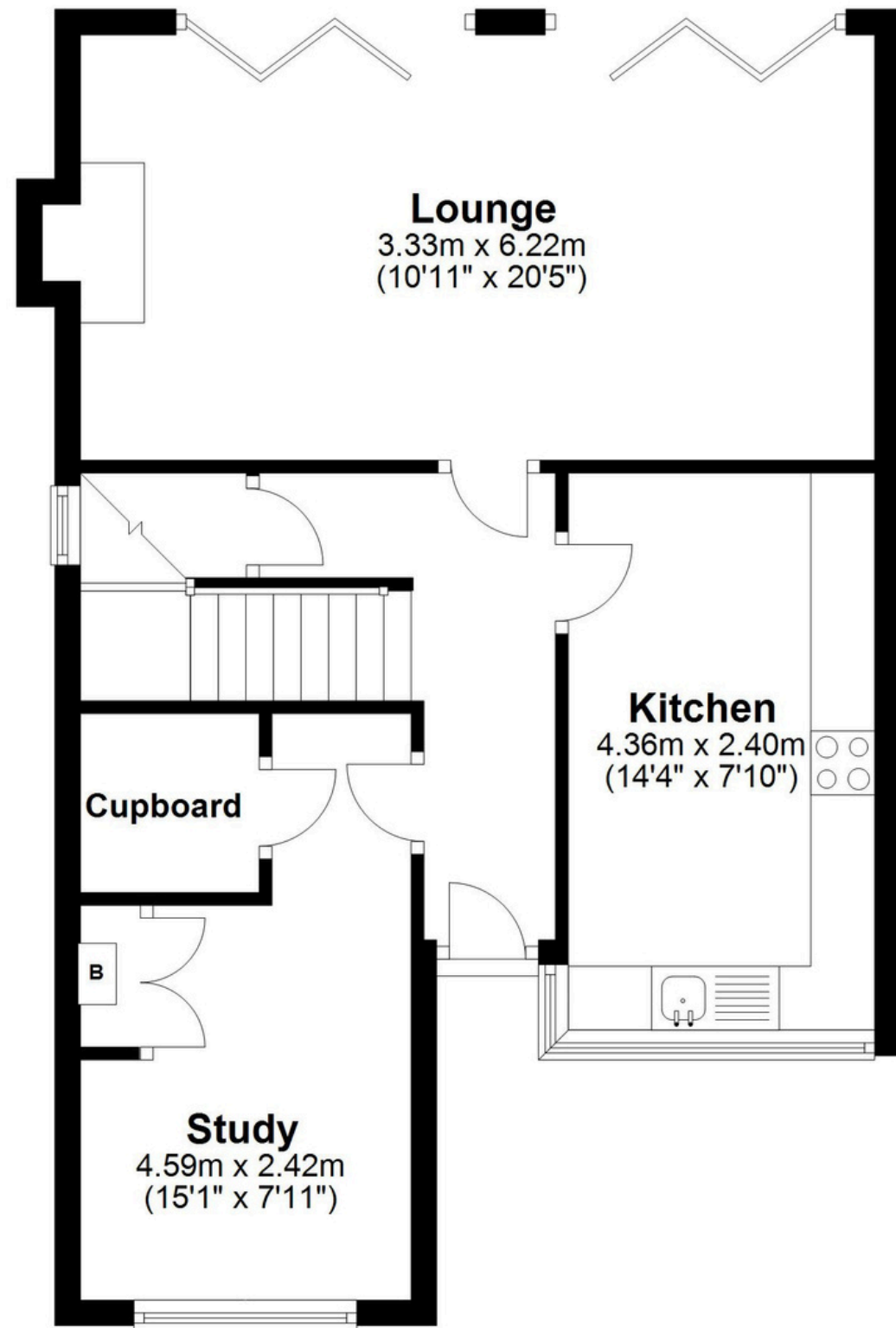
Get weekly insights and the best deals with our Mortgage Update, your shortcut to navigating the complex mortgage landscape confidently.



SCAN TO VIEW OUR WEEKLY FILMS & SUBSCRIBE

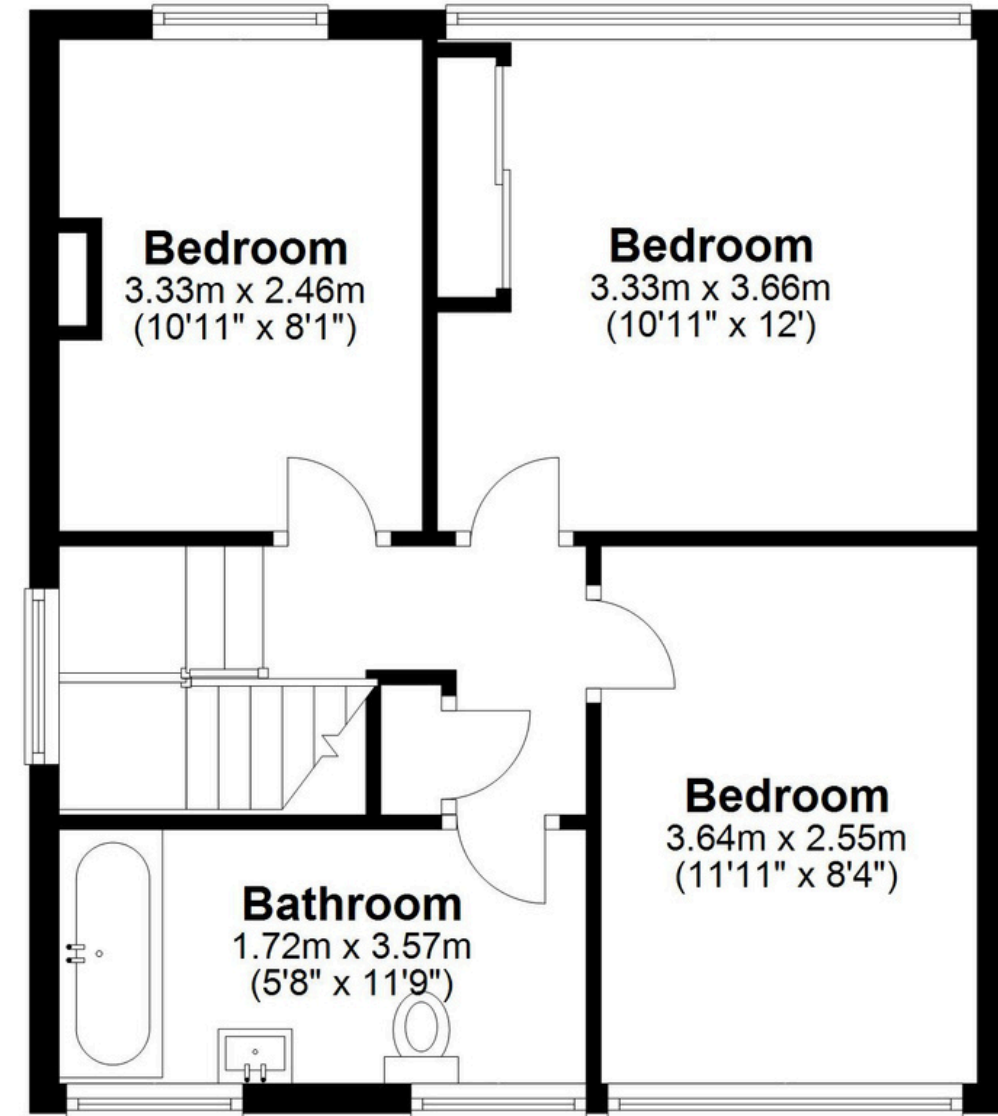
Ground Floor

Approx. 51.7 sq. metres (556.9 sq. feet)



First Floor

Approx. 44.0 sq. metres (473.3 sq. feet)



Total area: approx. 95.7 sq. metres (1030.2 sq. feet)

This floor plan is for illustration purposes only, this is not intended to be a measured/scaled survey or comply with RICS guidelines. All measurements (including total floor area) openings, orientation and floor area are approximate. No details are guaranteed, they cannot be relied upon for any purpose and do not form part of any agreement. A party must rely upon its own inspection(s). No responsibility is taken for any error, omission, or mis-statement.
Plan produced using PlanUp.