

Need a Mortgage in principle to make offers? Call us now for quick assistance!  
0121 775 0101



Do you need to sell? Start your journey now! Call us we can help.  
0121 775 0101



**SCAN FOR MORE INFO**  
**SIZE** - 2013 Sq Ft  
**TENURE** - Freehold  
**COUNCIL TAX** - Solihull MBC - G  
**BROADBAND** - Upload Max 1000 Mbps  
Download Max 1000 Mbps  
**MOBILE** - EE Three O2 Vodafone  
**EPC** - D 58  
**PARKING** - For at least 4 Cars  
**FLOODRISK** - Very Low  
**SERVICES** - Mains  
**COVENANTS** - N/A

## SILHILL HALL ROAD

Offers in Excess of £800,000

This glorious 1930's detached property is situated on one of Solihull's most prestigious roads and offers fabulous family accommodation. Silhill Hall Road is a charming location for this delightful house with 4 bedrooms and 1 bathroom. This property offers a perfect blend of comfort and style, ideal for those seeking a spacious home in a sought-after area.

### FEATURES

- Traditional Detached Property
- Two Large Reception Rooms
- Kitchen/Diner with Spacious Utility and Guest Cloakroom
- Four Double Bedrooms
- Family Bathroom and Separate WC
- Stunning Private Rear Garden
- Driveway Parking and Single Garage
- Sought After Residential Road
- Convenient Location

Are you an investor interested in expanding your portfolio?

Call 0121 775 0101 to provide your investment criteria for alerts.



SCAN TO VIEW OUR WEEKLY FILMS & SUBSCRIBE

### Sneak Peeks

Every week, we unveil "Sneak Peeks," a feature showcasing exclusive properties before they hit Rightmove and other platforms.

### The Landlord Club

Join our Landlord Club for weekly updates on legislation, market trends, and our Letting Director's 'Investment Pick of the Week' for optimal ROI.

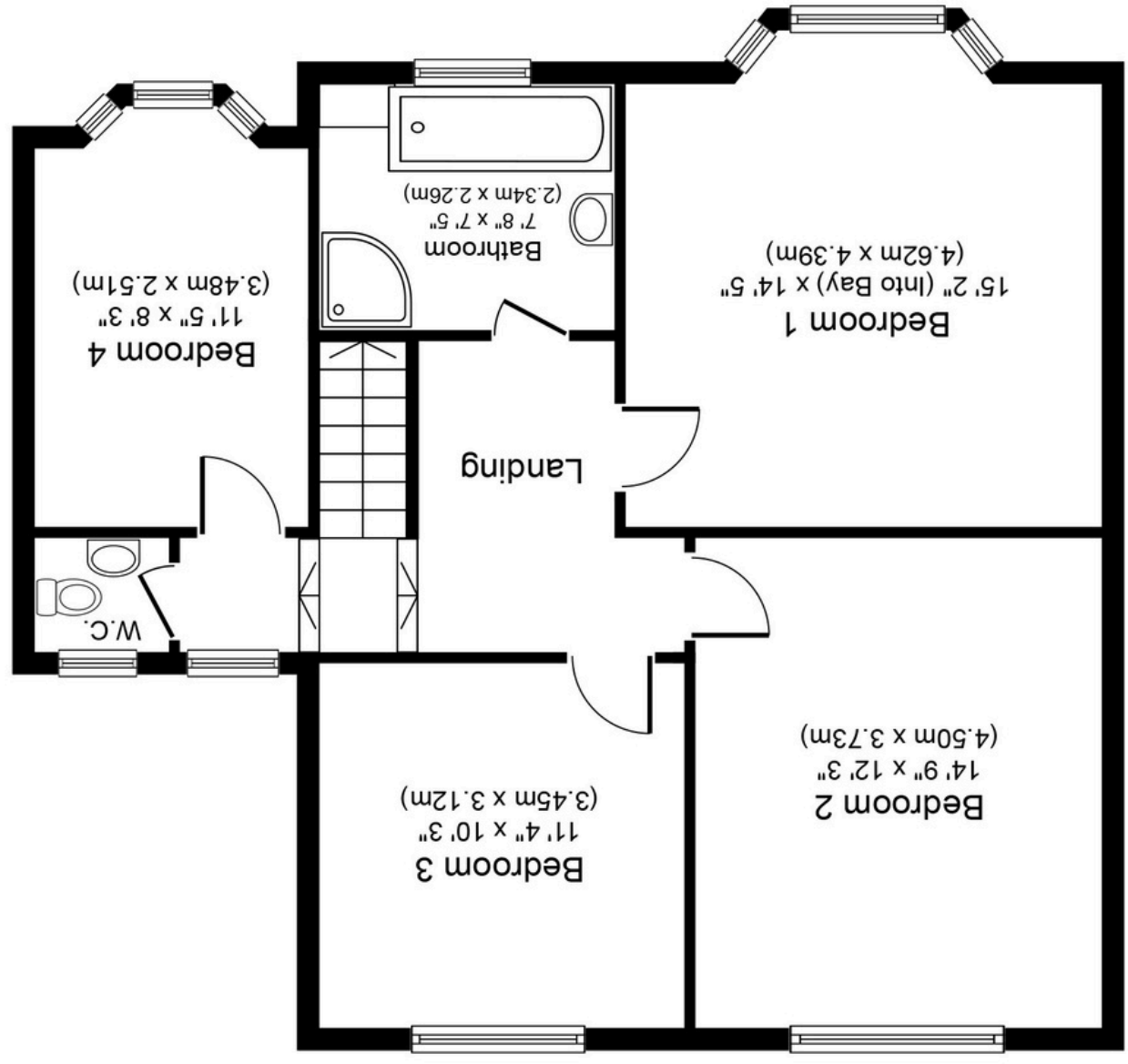
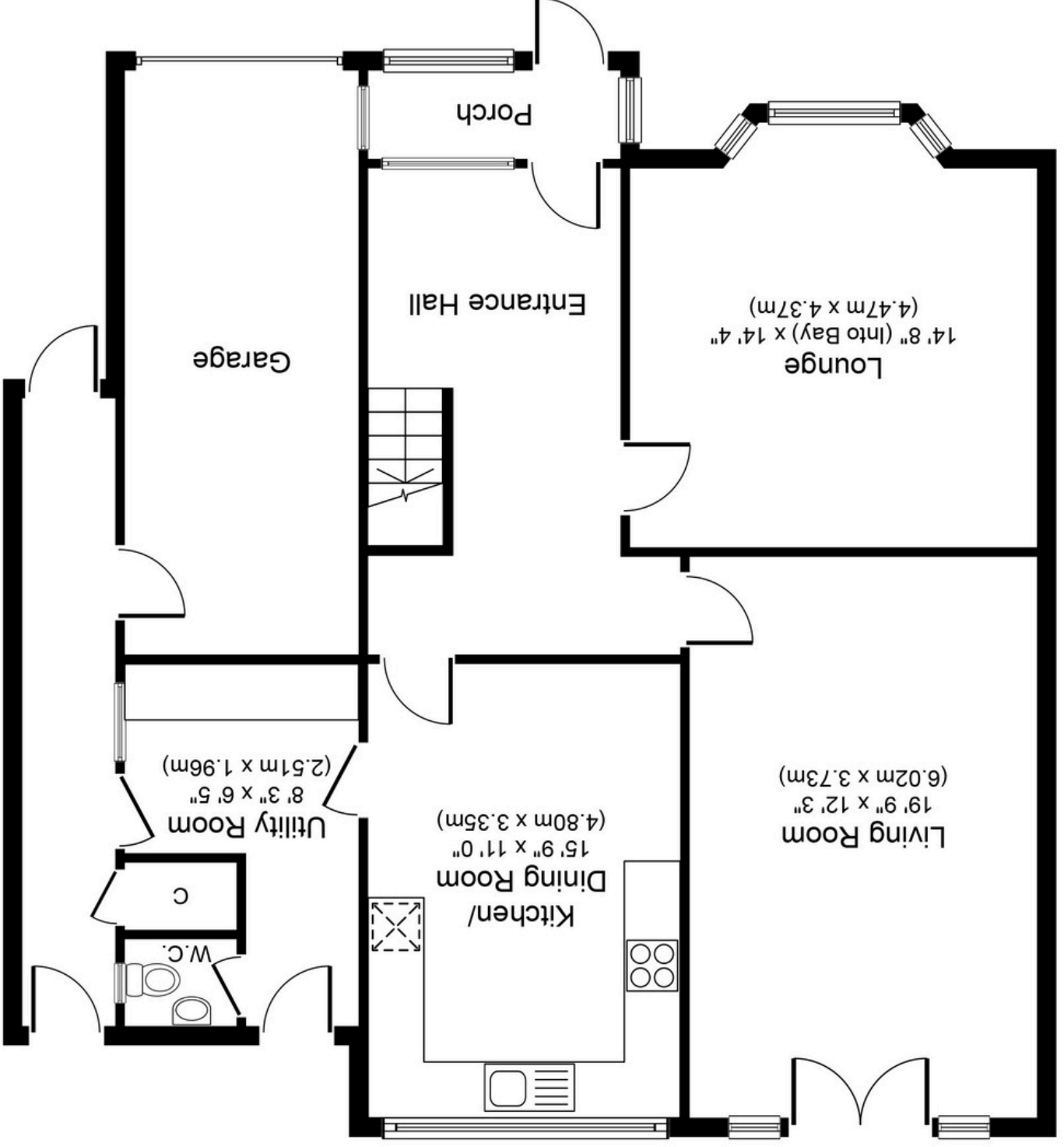
### HTSPMD

Tune into 'How's The Solihull Property Market Dom' weekly for a quick, insightful snapshot of the market.

### The Mortgage Update

Get weekly insights and the best deals with our Mortgage Update, your shortcut to navigating the complex mortgage landscape confidently.





Whilst every attempt has been made to ensure the accuracy of the floor plan contained here, measurements of doors, windows, rooms and any other items are approximate and no responsibility is taken for any error, omission, or mis-statement. The measurements should not be relied upon for valuation, transaction and/or funding purposes. This plan is for illustrative purposes only and should be used as such by any prospective purchaser or tenant. The services, systems and appliances shown have not been tested and no guarantee as to their operability or efficiency can be given.