

Need a Mortgage in principle  
to make offers? Call us now  
for quick assistance!  
**0121 775 0101**



Do you need to sell?  
Start your journey now!  
Call us we can help.  
**0121 775 0101**



**SCAN FOR MORE INFO**  
**SIZE** - 774 Sq Ft  
**TENURE** - Freehold  
**COUNCIL TAX** - Solihull Metropolitan Borough Council - D  
**BROADBAND** - Upload Max 2000Mbps Download Max 2000Mbps  
**MOBILE SERVICES** - EE - 83%, O2 - 75%, 3 - 84%, Vodafone - 76%  
**EPC** - B - 83  
**PARKING** - For at least 2 Cars  
**FLOODRISK** - Very Low  
**SERVICES** - Mains  
**COVENANTS** - N/A

**30 Dewberry Road**  
**Tidbury Green, B90 1UJ**  
**Asking Price £450,000**

Situated in the charming semi-rural area of Tidbury Green, Solihull, this beautifully presented detached house on Dewberry Road is a perfect family home. Fully modernised and ready for you to move in, this property offers a seamless blend of comfort and style.

**FEATURES**

- Modern Detached Property
- Beautifully Presented Throughout
- Bright Lounge to Front
- Kitchen/Diner with Integrated Appliances
- Principal Bedroom with Build-In Wardrobes & En-Suite
- Second Double Bedroom with Wardrobes
- Third Single/Home Office/Nursery
- Modern Family Bathroom
- South Facing Landscaped Rear Garden
- Driveway Parking & Detached Single Garage

Are you an investor  
interested in expanding your  
portfolio?

**Call 0121 775 0101 to provide your  
investment criteria for alerts.**



SCAN TO **VIEW OUR**  
**WEEKLY FILMS &**  
**SUBSCRIBE**

**Sneak Peeks**

Every week, we unveil "Sneak Peeks," a feature showcasing exclusive properties before they hit Rightmove and other platforms.

**The Landlord Club**

Join our Landlord Club for weekly updates on legislation, market trends, and our Letting Director's 'Investment Pick of the Week' for optimal ROI.

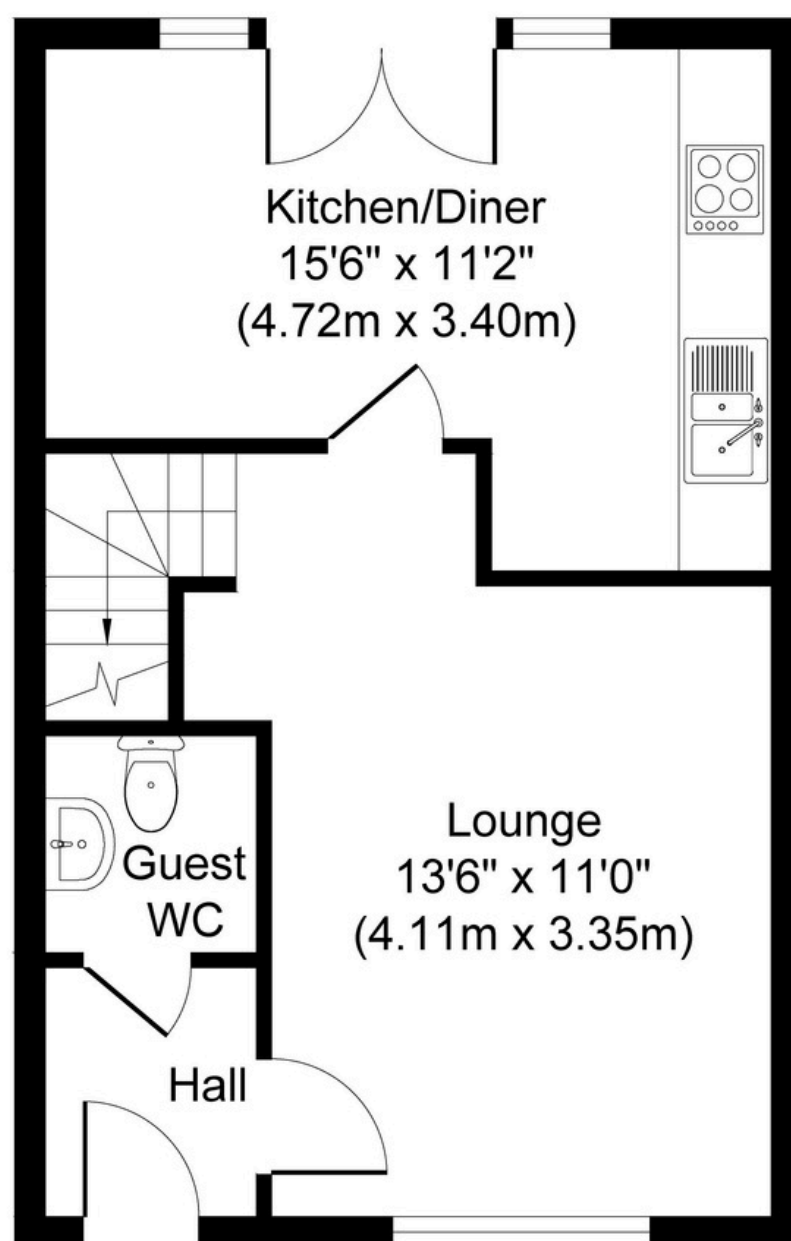
**HTSPMD**

Tune into 'How's The Solihull Property Market Dom' weekly for a quick, insightful snapshot of the market.

**The Mortgage Update**

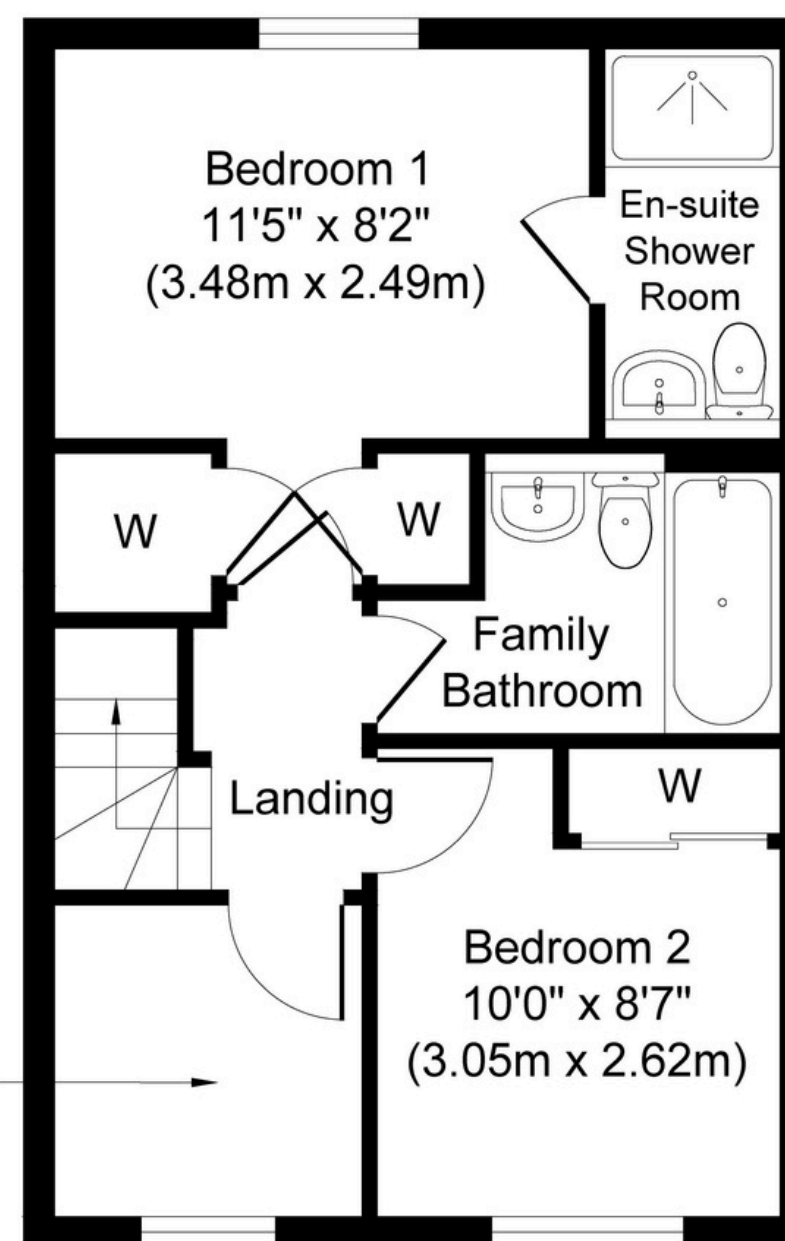
Get weekly insights and the best deals with our Mortgage Update, your shortcut to navigating the complex mortgage landscape confidently.





**Ground Floor**  
**Approximate Floor Area**  
**387 sq. ft**  
**(35.91 sq. m)**

Bedroom 3  
 6'8" x 6'8"  
 (2.03m x 2.03m)



**First Floor**  
**Approximate Floor Area**  
**387 sq. ft**  
**(35.91 sq. m)**

Whilst every attempt has been made to ensure the accuracy of the floor plan contained here, measurements of doors, windows, rooms and any other items are approximate and no responsibility is taken for any error, omission, or mis-statement. The measurements should not be relied upon for valuation, transaction and/or funding purposes. This plan is for illustrative purposes only and should be used as such by any prospective purchaser or tenant.

The services, systems and appliances shown have not been tested and no guarantee as to their operability or efficiency can be given.

Copyright V360 Ltd 2026 | [www.houseviz.com](http://www.houseviz.com)