

Need a Mortgage in principle
to make offers? Call us now
for quick assistance!
0121 775 0101



Do you need to sell?
Start your journey now!
Call us we can help.
0121 775 0101



SCAN FOR MORE INFO
SIZE - 1514 Sq Ft
TENURE - Freehold
COUNCIL TAX - Solihull Metropolitan Borough Council - E
BROADBAND - Upload Max 1000Mbps
Download Max 1000Mbps
EPC - D - 58
PARKING - For at least 1 Car
FLOODRISK - Very Low
SERVICES - Mains
COVENANTS - N/A

20 Farnborough Drive
Monkspath, B90 4TB
Offers in the Region of £500,000

This detached house presents an excellent opportunity for families and individuals alike. Offered with no upward chain, this home also presents potential for extension, subject to planning permission, allowing you to tailor the space to your needs. This delightful property is not to be missed and is ready to welcome its new owners.

FEATURES

- Offered with No Upward Chain & Offering Fantastic Potential to Extend (STPP)
- Lounge to Front Elevation
- Dining Room Overlooking the Garden
- Breakfast Kitchen
- Two Double Bedrooms
- Two Good Sized Single Bedrooms
- Family Bathroom
- Mature South West Facing Rear Garden
- Driveway Parking & Tandem Length Garage
- Convenient Location

Are you an investor
interested in expanding your
portfolio?

**Call 0121 775 0101 to provide your
investment criteria for alerts.**



SCAN TO **VIEW OUR**
WEEKLY FILMS &
SUBSCRIBE

Sneak Peeks

Every week, we unveil "Sneak Peeks," a feature showcasing exclusive properties before they hit Rightmove and other platforms.

The Landlord Club

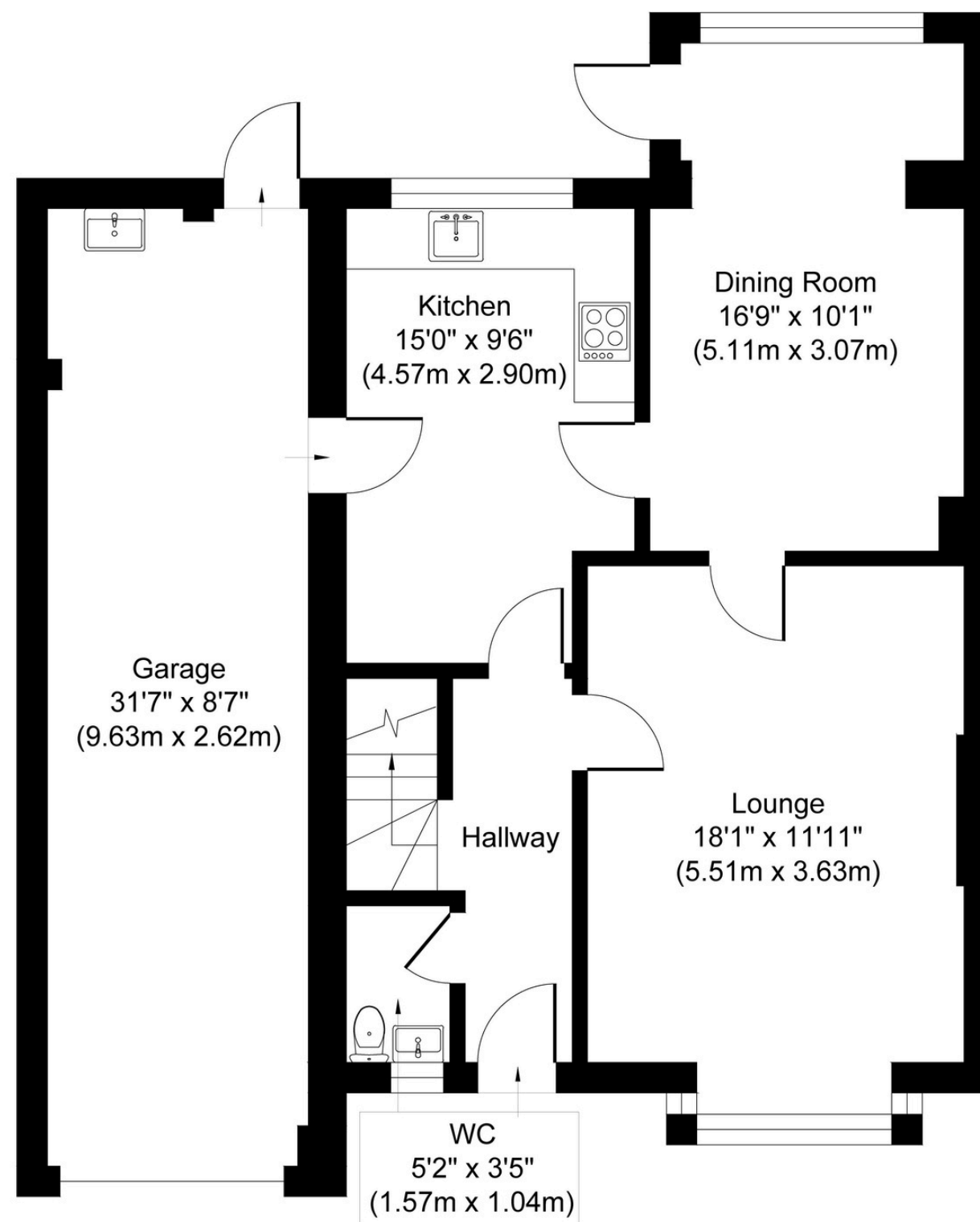
Join our Landlord Club for weekly updates on legislation, market trends, and our Letting Director's 'Investment Pick of the Week' for optimal ROI.

HTSPMD

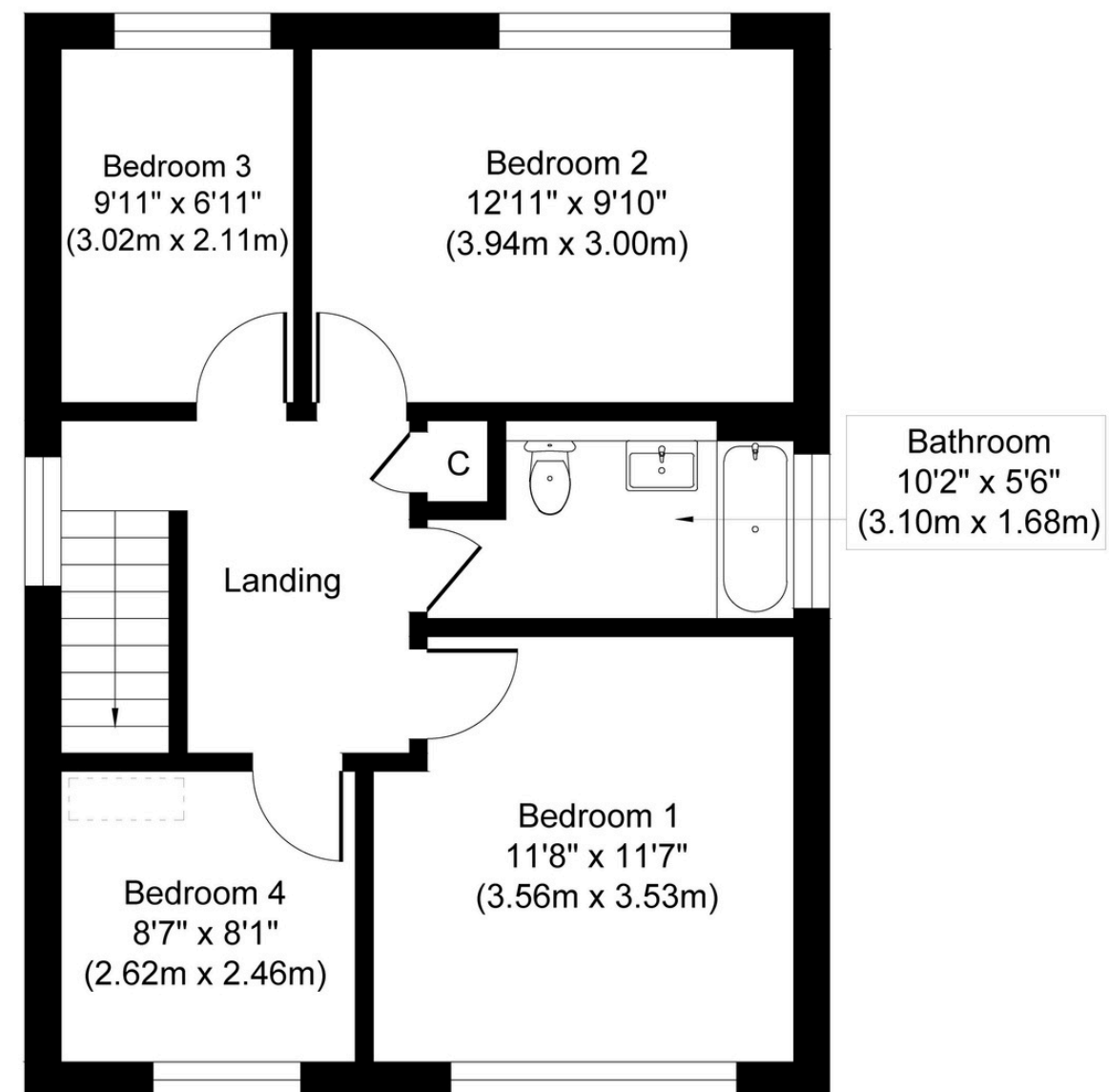
Tune into 'How's The Solihull Property Market Dom' weekly for a quick, insightful snapshot of the market.

The Mortgage Update

Get weekly insights and the best deals with our Mortgage Update, your shortcut to navigating the complex mortgage landscape confidently.



Ground Floor
Approximate Floor Area
941 sq. ft
(87.42 sq. m)



First Floor
Approximate Floor Area
573 sq. ft
(53.23 sq. m)

Whilst every attempt has been made to ensure the accuracy of the floor plan contained here, measurements of doors, windows, rooms and any other items are approximate and no responsibility is taken for any error, omission, or mis-statement. The measurements should not be relied upon for valuation, transaction and/or funding purposes. This plan is for illustrative purposes only and should be used as such by any prospective purchaser or tenant.

The services, systems and appliances shown have not been tested and no guarantee as to their operability or efficiency can be given.

Copyright V360 Ltd 2025 | www.houseviz.com