

Need a Mortgage in principle
to make offers? Call us now
for quick assistance!
0121 775 0101



Do you need to sell?
Start your journey now!
Call us we can help.
01564 777 314



SCAN FOR MORE INFO
SIZE - 2360 Sq Ft
TENURE - Freehold
COUNCIL TAX - Solihull Metropolitan Borough Council - E.
BROADBAND - Upload Max 1000Mbps
Download Max 1800Mbps
EPC - D - 68
PARKING - For Up to 4 Vehicles
FLOODRISK - Very Low
SERVICES - Mains
COVENANTS - N/A

LONGDON ROAD

Knowle, B93

Charming and generously sized five-bedroom home with a thoughtful loft conversion and extended living area. Situated close to the heart of Knowle, this property offers comfortable family living, flexible space and a good-sized garden perfect for enjoying the outdoors.

FEATURES

- Extended & Converted Semi-Detached Property
- Front Sitting Room
- Lounge/Dining Room
- Breakfast Kitchen with Large Conservatory
- Two Utility Rooms & Study
- Four first Floor Bedrooms, 2 En-Suite Shower Rooms & Family Bathroom
- Second Floor Principal Bedroom with En-Suite Bathroom
- Generous Sized Private Rear Garden with Summerhouse
- Driveway Parking for Multiple Vehicles
- Central Knowle Location
- Arden Academy Catchment

Are you an investor
interested in expanding your
portfolio?

Call **01564 777 314** to provide your
investment criteria for alerts.



SCAN TO **VIEW OUR**
WEEKLY FILMS &
SUBSCRIBE

Sneak Peeks

Every week, we unveil "Sneak Peeks," a feature showcasing exclusive properties before they hit Rightmove and other platforms.

The Landlord Club

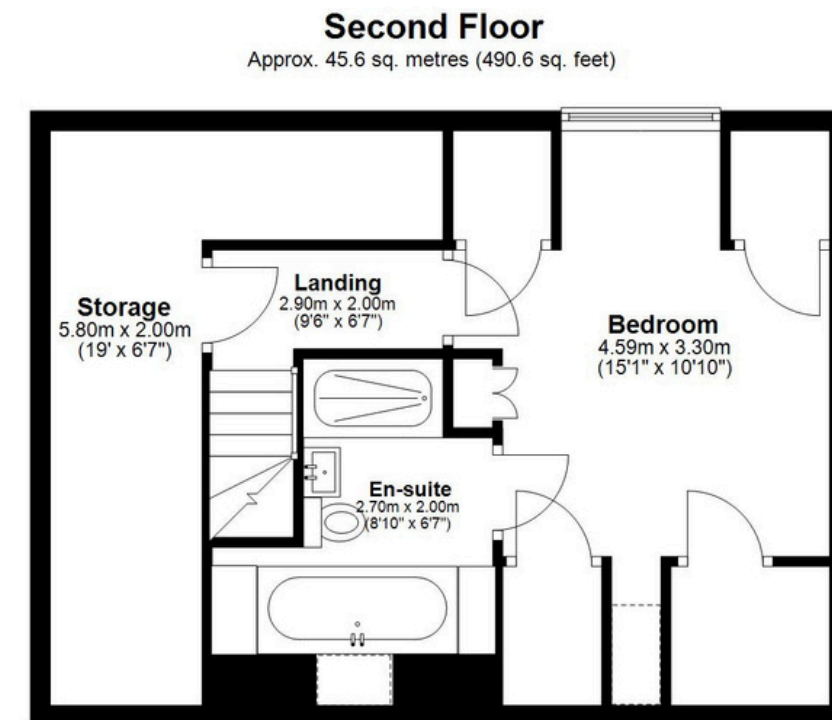
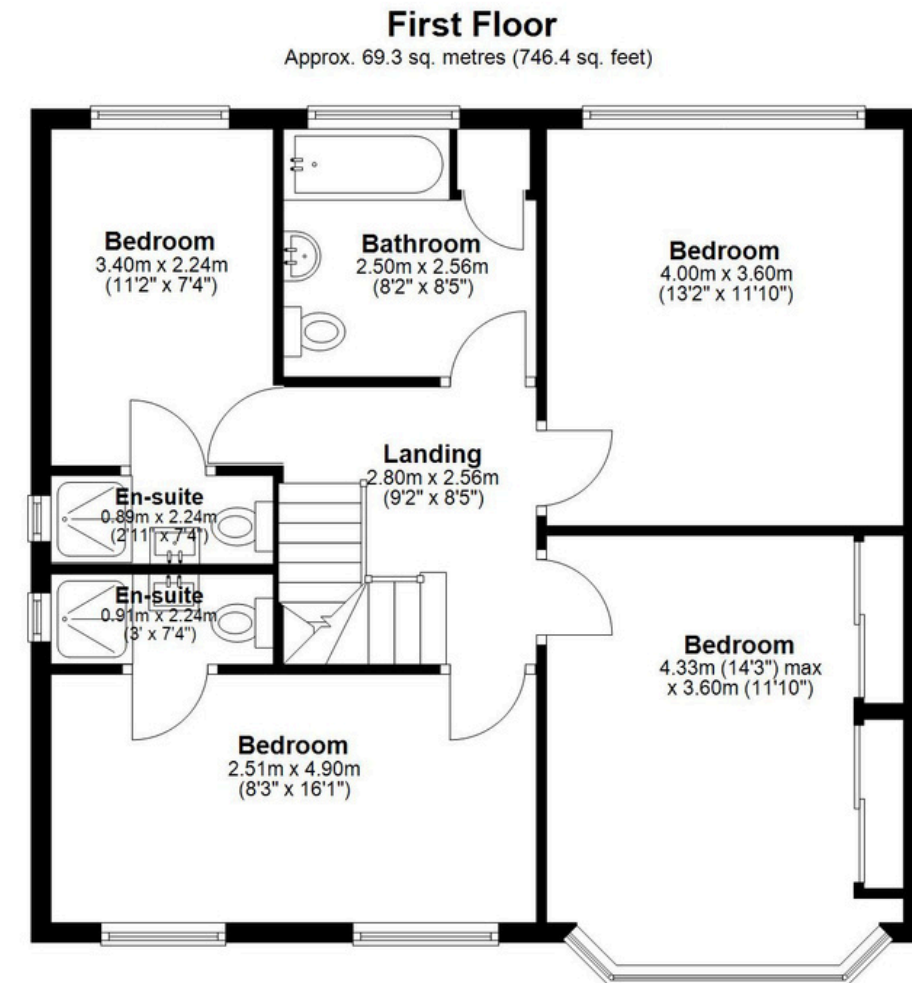
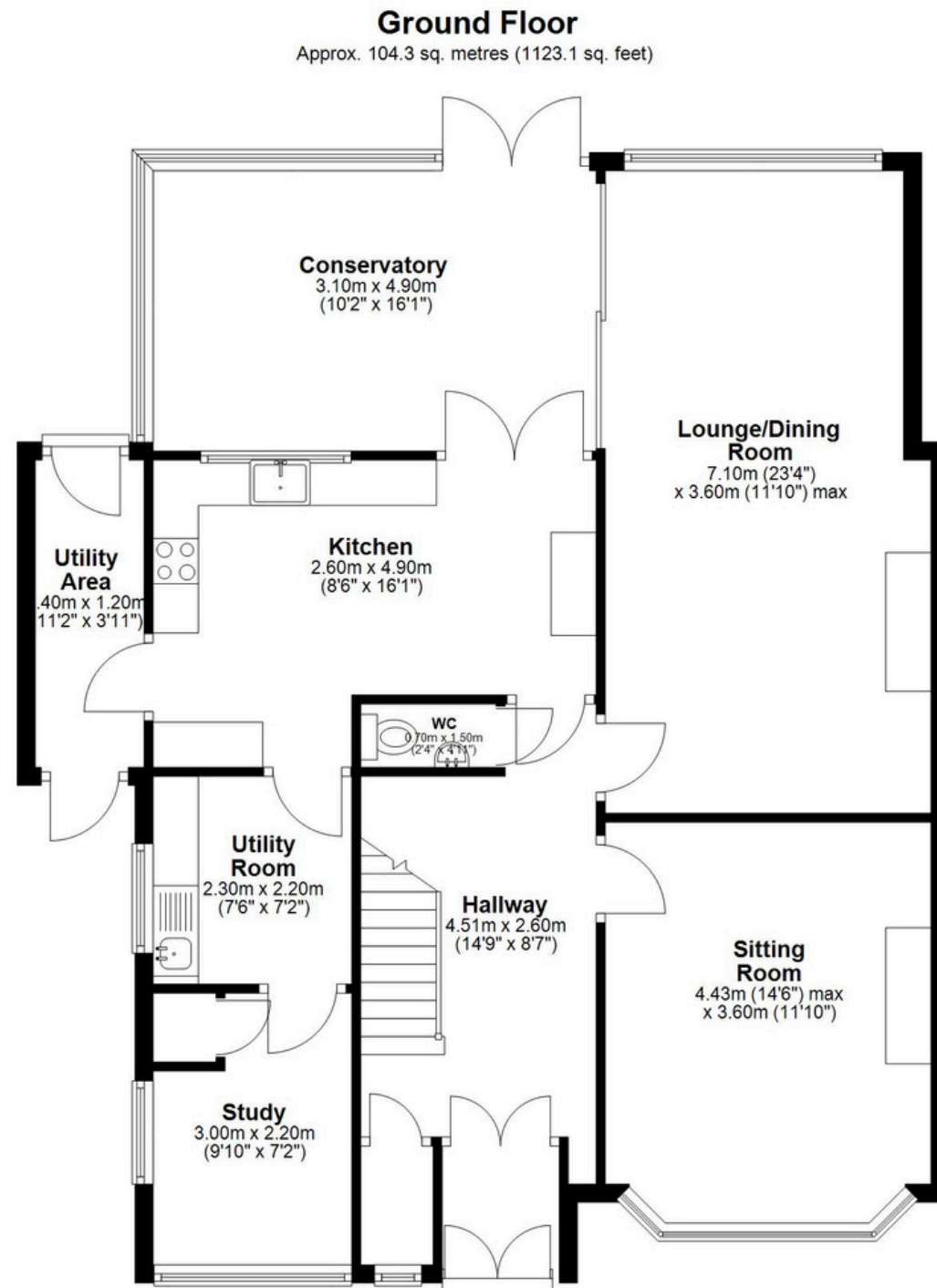
Join our Landlord Club for weekly updates on legislation, market trends, and our Letting Director's 'Investment Pick of the Week' for optimal ROI.

HTSPMD

Tune into 'How's The Solihull Property Market Dom' weekly for a quick, insightful snapshot of the market.

The Mortgage Update

Get weekly insights and the best deals with our Mortgage Update, your shortcut to navigating the complex mortgage landscape confidently.



Total area: approx. 219.3 sq. metres (2360.1 sq. feet)

This floor plan is for illustrative purposes only. It is not drawn to scale. Any measurements, floor areas, openings and orientations are approximate. No details are guaranteed, they cannot be relied upon for any purpose and do not form any part of any agreement. No Liability is taken for any error, omission or misstatement. A party must rely upon its own inspection(s).
Plan produced using PlanUp.

16 Longdon Road , Knowle, Solihull