

Need a Mortgage in principle  
to make offers? Call us now  
for quick assistance!  
**0121 775 0101**



Do you need to sell?  
Start your journey now!  
Call us we can help.  
**0121 775 0101**



**47 Radlow Crescsent**  
**Marston Green, B37 7LZ**  
**Offers in the Region of £590,000**

**SCAN FOR MORE INFO**  
**SIZE** - 2254 Sq Ft  
**TENURE** - Freehold  
**COUNCIL TAX** - Solihull Metropolitan Borough Council - F  
**BROADBAND** - Upload Superfast 20Mbps  
Download Superfast 79Mbps  
**MOBILE** - Three O2 EE  
**EPC** - C - 70  
**PARKING** - For at least 5 Cars  
**FLOODRISK** - Very Low  
**SERVICES** - Mains  
**COVENANTS** - N/A

This stunning detached house is a true gem offering a blend of modern living and comfort, making it a must-see for families seeking a spacious and stylish residence. The property has been beautifully extended and presented in neutral tones throughout, making it a perfect canvas for your personal touch. Viewing is highly recommended to fully appreciate all that this exceptional property has to offer.

**FEATURES**

- Beautifully Presented & Extended Detached Property
- Bright Lounge
- Stunning Open Plan Kitchen/Dining/Family Room
- Separate Utility Room
- Double Bedroom Two With En-Suite
- Three Further Good Sized Double Bedrooms
- Family Bathroom
- Second Floor Principal Bedroom with En-Suite & Walk-In Wardrobe
- Low Maintenance Rear Garden
- Ample Driveway Parking

Are you an investor  
interested in expanding your  
portfolio?

**Call 0121 775 0101 to provide your investment criteria for alerts.**



SCAN TO **VIEW OUR**  
**WEEKLY FILMS &**  
**SUBSCRIBE**



**Sneak Peeks**

Every week, we unveil "Sneak Peeks," a feature showcasing exclusive properties before they hit Rightmove and other platforms.



**The Landlord Club**

Join our Landlord Club for weekly updates on legislation, market trends, and our Letting Director's 'Investment Pick of the Week' for optimal ROI.



**HTSPMD**

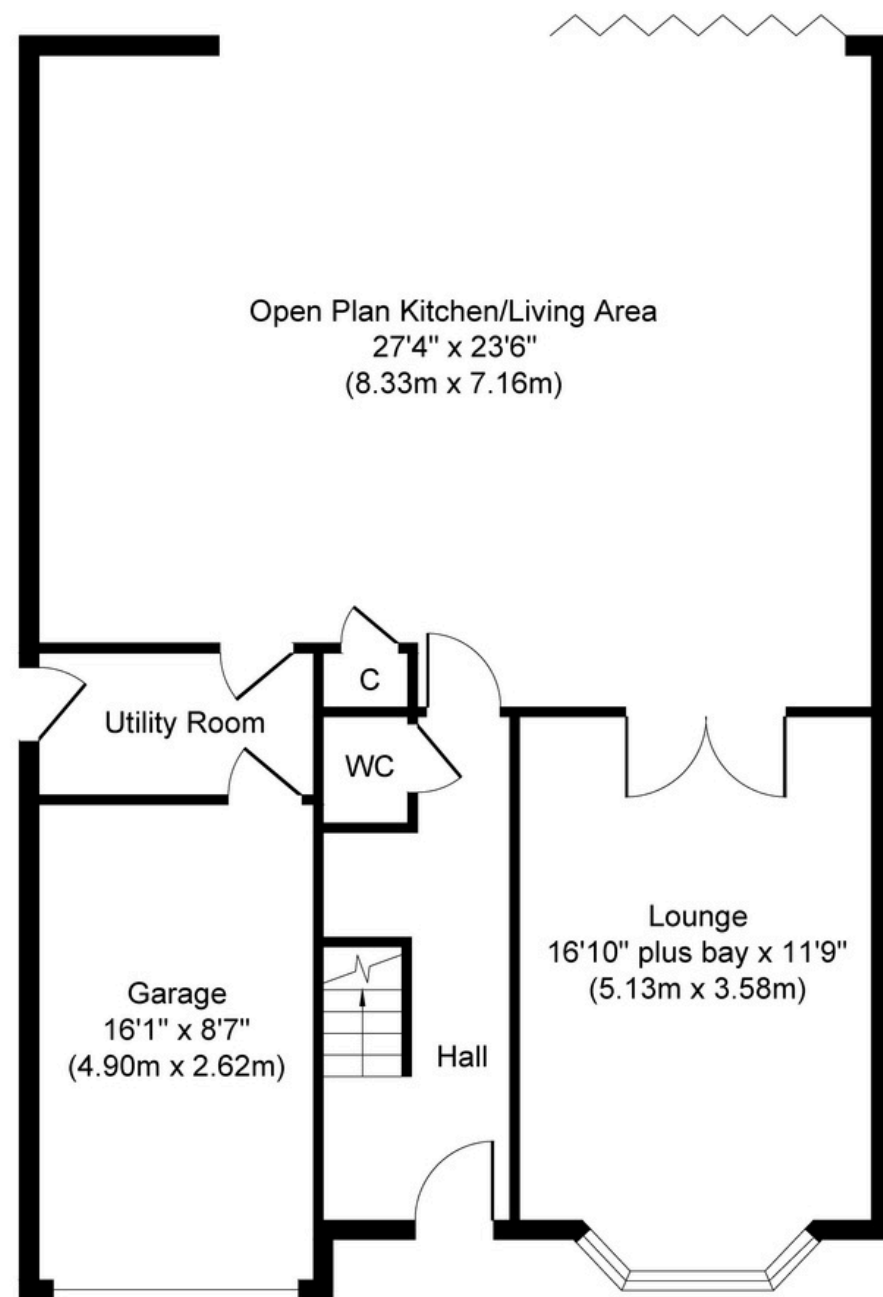
Tune into 'How's The Solihull Property Market Dom' weekly for a quick, insightful snapshot of the market.



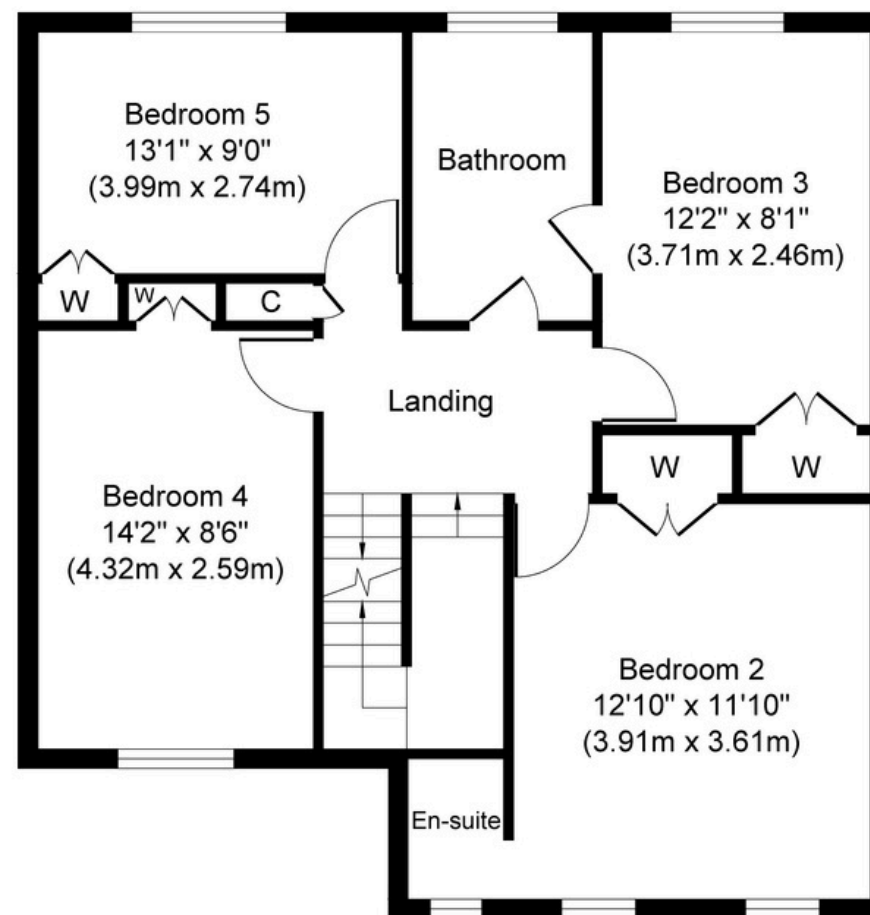
**The Mortgage Update**

Get weekly insights and the best deals with our Mortgage Update, your shortcut to navigating the complex mortgage landscape confidently.

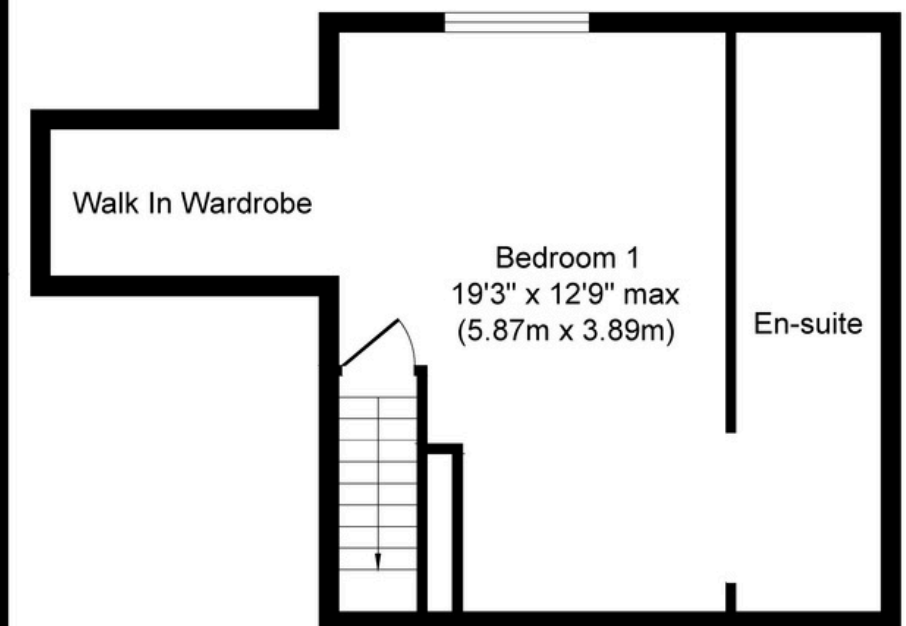




**Ground Floor**  
Approximate Floor Area  
1112 sq. ft  
(103.30 sq. m)



**First Floor**  
Approximate Floor Area  
744 sq. ft  
(69.13 sq. m)



**Second Floor**  
Approximate Floor Area  
398 sq. ft  
(37.00 sq. m)

**Approx. Gross Internal Floor Area 2254 sq. ft / 209.43 sq. m**

Whilst every attempt has been made to ensure the accuracy of the floor plan contained here, measurements of doors, windows, rooms and any other items are approximate and no responsibility is taken for any error, omission, or mis-statement. The measurements should not be relied upon for valuation, transaction and/or funding purposes. This plan is for illustrative purposes only and should be used as such by any prospective purchaser or tenant.

The services, systems and appliances shown have not been tested and no guarantee as to their operability or efficiency can be given.

Copyright V360 Ltd 2025 | [www.houseviz.com](http://www.houseviz.com)