

Need a Mortgage in principle  
to make offers? Call us now  
for quick assistance!  
**0121 775 0101**



Do you need to sell?  
Start your journey now!  
Call us we can help.  
**01564 777 314**



**SCAN FOR MORE INFO**  
**SIZE** - 1359 Sq Ft  
**TENURE** - Freehold  
**COUNCIL TAX** - Solihull Metropolitan Borough Council - F  
**BROADBAND** - Upload Max 220Mbps  
Download Max 1000Mbps  
**MOBILE** - EE Three O2 Vodafone  
**EPC** - 80 - B  
**PARKING** - Driveway & Single Garage  
**FLOODRISK** - Very Low  
**SERVICES** - Mains  
**COVENANTS** - N/A

Are you an investor  
interested in expanding your  
portfolio?

**Call 01564 777 314 to provide your  
investment criteria for alerts.**

## BOWER SQUARE

Knowle, B93

Situated in a peaceful cul-de-sac, this stunning detached house offers a perfect blend of modern living and family-friendly convenience. Built in 2015, this immaculate property is ideally located just a five-minute stroll from the highly regarded Knowle Primary School, making it an excellent choice for families. Offered with no upward chain, this delightful home is ready for you to move in and make it your own.

### FEATURES

- Beautifully Presented Detached Property
- Quiet Cul-de-Sac Location
- Lounge with Bay Window
- Stunning Kitchen/Dining Room with Separate Utility Room
- Study/Playroom
- Principal Bedroom with En-Suite Shower Room
- Two Further Double Bedrooms and Third Single
- Modern Family Bathroom
- Driveway Parking & Single Garage
- Low Maintenance Rear Garden
- Walking Distance to Knowle High Street



SCAN TO VIEW OUR  
WEEKLY FILMS &  
SUBSCRIBE

### Sneak Peeks

Every week, we unveil "Sneak Peeks," a feature showcasing exclusive properties before they hit Rightmove and other platforms.

### The Landlord Club

Join our Landlord Club for weekly updates on legislation, market trends, and our Letting Director's 'Investment Pick of the Week' for optimal ROI.

### HTSPMD

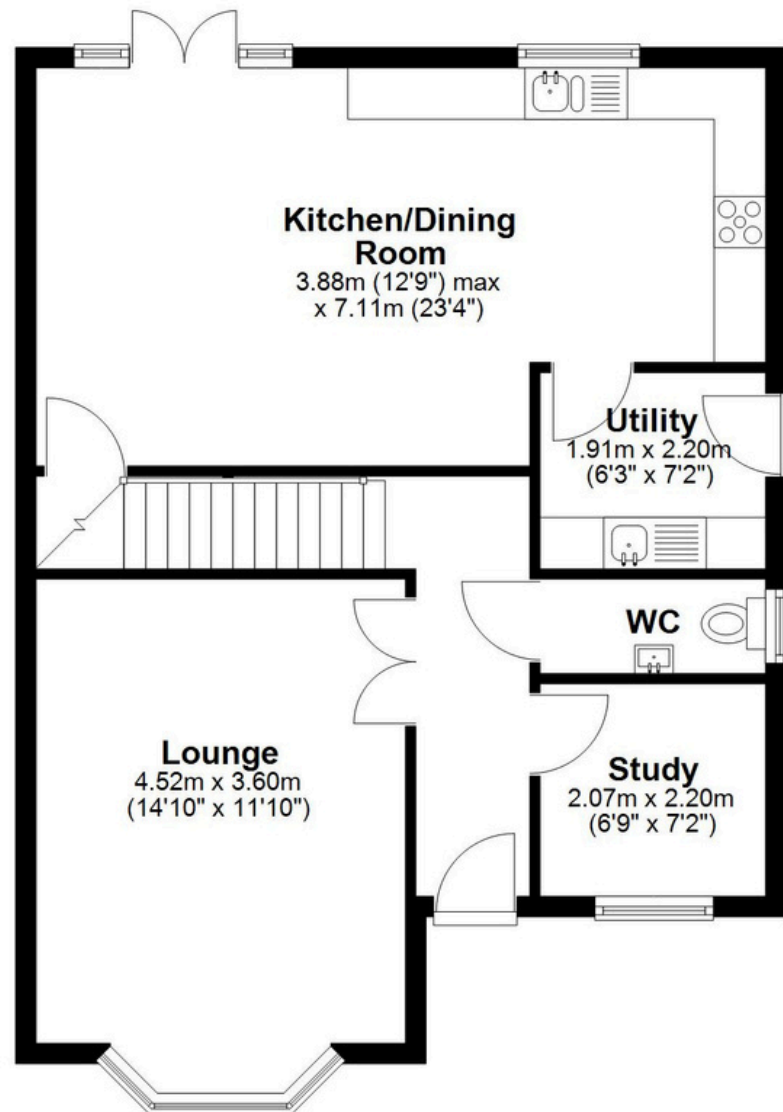
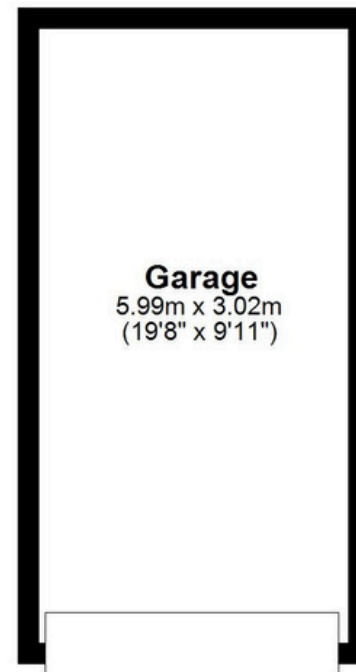
Tune into 'How's The Solihull Property Market Dom' weekly for a quick, insightful snapshot of the market.

### The Mortgage Update

Get weekly insights and the best deals with our Mortgage Update, your shortcut to navigating the complex mortgage landscape confidently.

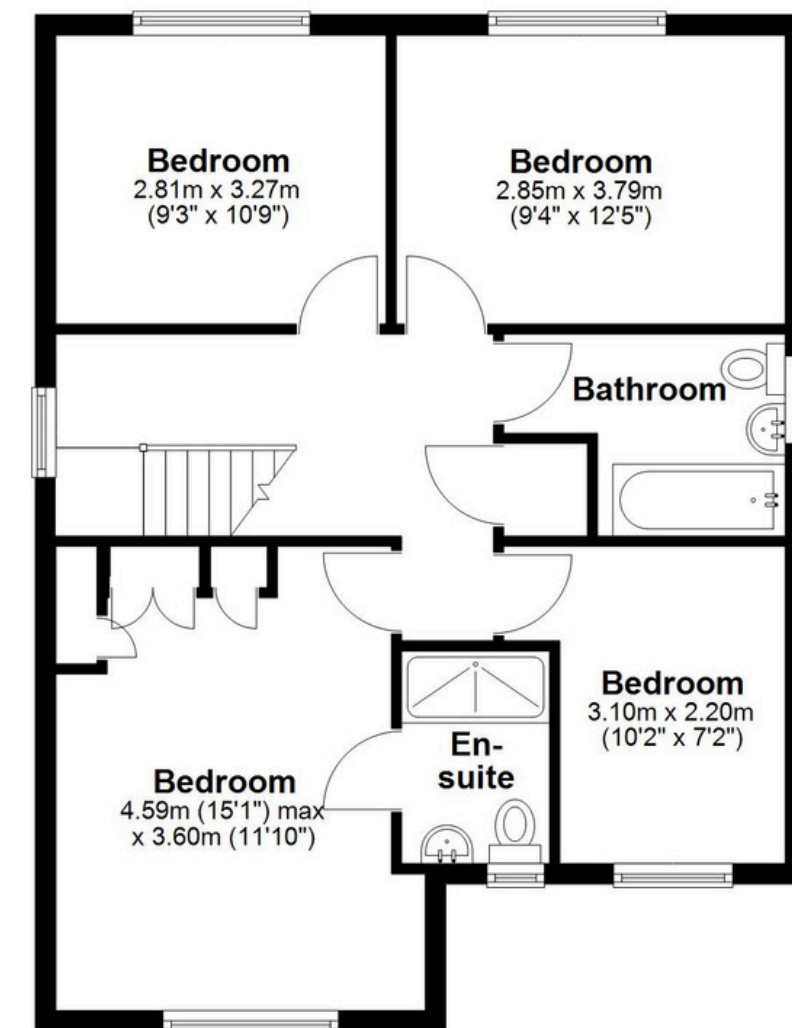


**Ground Floor**  
Approx. 80.9 sq. metres (870.5 sq. feet)



**First Floor**

Approx. 63.5 sq. metres (683.9 sq. feet)



Total area: approx. 144.4 sq. metres (1554.4 sq. feet)

This floor plan is for illustration purposes only, this is not intended to be a measured/scaled survey or comply with RICS guidelines. All measurements (including total floor area) openings, orientation and floor area are approximate. No details are guaranteed, they cannot be relied upon for any purpose and do not form part of any agreement. A party must rely upon its own inspection(s). No responsibility is taken for any error, omission, or mis-statement.  
Plan produced using PlanUp.