



DM&Co.
— SALES & LETTINGS —

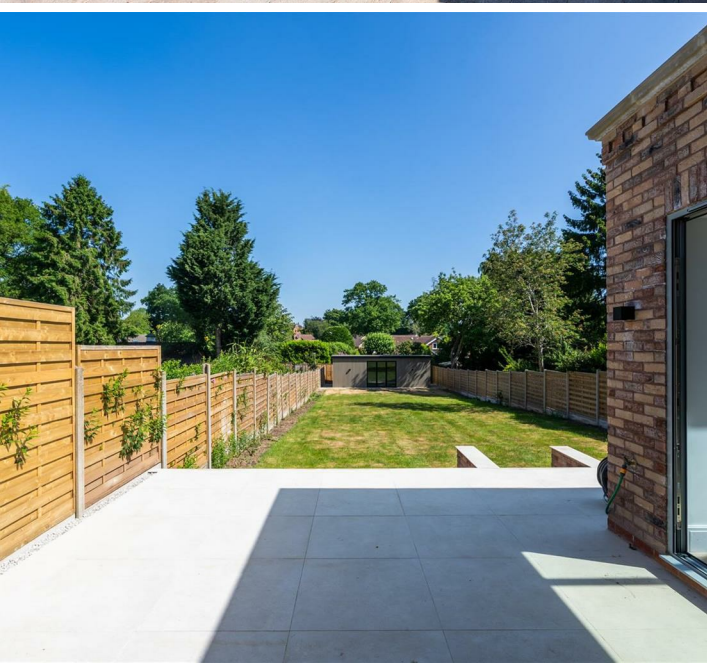
**24 Kingscote Road
B93 8RA**

Exceptional Five Bedroom Detached Home, Located In The Sought After Kingscote Road in Dorridge With Luxurious Finishes Throughout. Available Now & Offered Unfurnished!



DETAILS

Your Text Here



OUTSIDE

Your Text Here

VIEWINGS

At short notice with DM & Co. Homes on
0121 775 0101 or by email
lettings@dmandcohomes.co.uk



GENERAL INFORMATION

Your Text Here

OTHER SERVICES

DM & Co are pleased to offer the following services:-

Residential Lettings: If you are considering letting your property, please contact the office on 0121 775 0101.

Mortgage Services: If you would like advice on the best mortgages available, please contact us on 0121 775 0101.

Agents Note: Whilst every care has been taken to prepare these sales particulars, they are for guidance purposes only. All measurements are approximate and are for general guidance purposes only and whilst every care has been taken to ensure their accuracy, they should not be relied upon and potential buyers are advised to recheck the measurements.

FEATURES

- Luxurious Five-Bedroom Detached Residence On Sought-After Kingscote Road
- Stunning Open-Plan Kitchen, Dining & Family Room With Bi-Fold Doors
- Two En-Suite Bedrooms Plus A Luxury Family Bathroom
- Impressive Top-Floor Principal Suite With Freestanding Bath And Wet Room
- Beautifully Landscaped Garden With Porcelain-Tiled Patio And Garden Room
- Gated Resin Driveway With Ample Off-Road Parking And Electric Garage Door
- Easy Access To Solihull, Motorways, Birmingham Airport, And The NEC
- Holding Deposit - £1269.00
- Security Deposit - £6346.15
- Available Now

SIZE

Total - 2621.00 sq ft

TENURE

Your Text Here

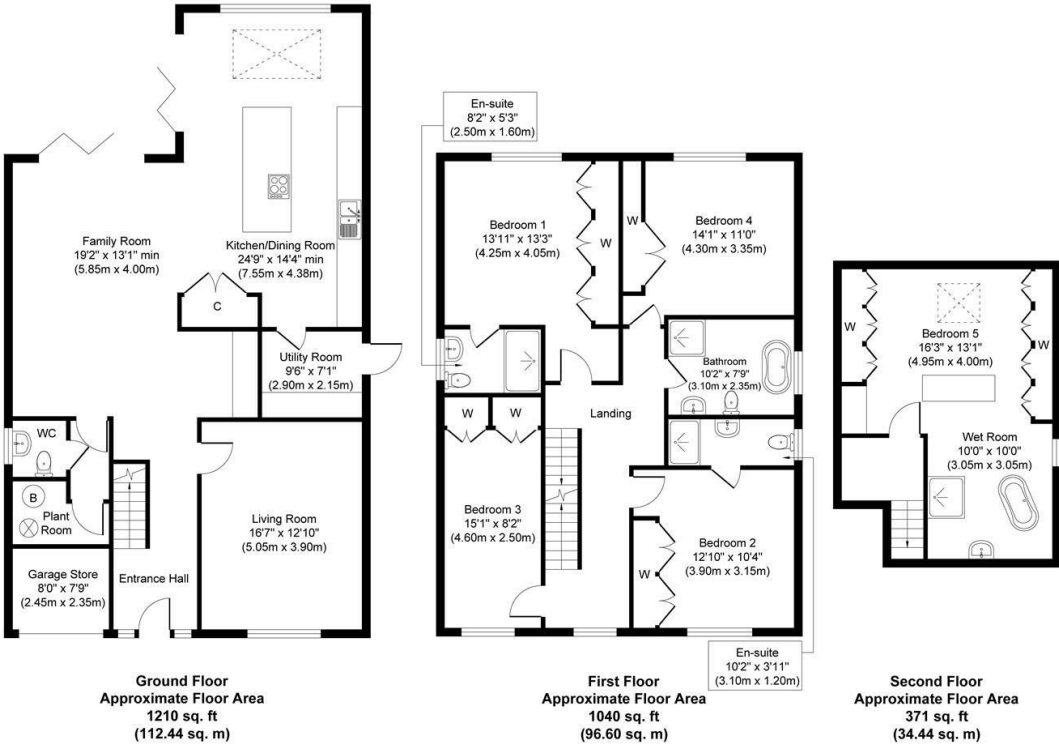
VIEWING

Book a viewing with Sole Agents DM & Co.
Premium by phone or email:

📞 0121 775 0101

@ lettings@dmandcohomes.co.uk

Agents Note: Whilst every care has been taken to prepare these salesparticulars, they are for guidance purposes only. All measurements are approximate and are for general guidance purposes only and whilst every care has been taken to ensure their accuracy, they should not be relied upon and potential buyers are advised to recheck the measurements



Whilst every attempt has been made to ensure the accuracy of the floor plan contained here, measurements of doors, windows, rooms and any other items are approximate and no responsibility is taken for any error, omission, or mis-statement. The measurements should not be relied upon for valuation, transaction and/or funding purposes. This plan is for illustrative purposes only and should be used as such by any prospective purchaser or tenant. The services, systems and appliances shown have not been tested and no guarantee as to their operability or efficiency can be given.
Copyright V360 Ltd 2025 | www.houseviz.com

