

Need a Mortgage in principle  
to make offers? Call us now  
for quick assistance!  
**0121 775 0101**



Do you need to sell?  
Start your journey now!  
Call us we can help.  
**0121 775 0101**



**SCAN FOR MORE INFO**  
**SIZE** - 748 Sq Ft  
**TENURE** - Freehold  
**COUNCIL TAX** - Solihull Metropolitan Borough Council - C  
**BROADBAND** - Upload Max 220Mbps  
Download Max 1800 Mbps  
**MOBILE** - EE, Three, O2, Vodafone  
**EPC** - B - 83  
**PARKING** - Allocated Parking For 2 Cars  
**FLOODRISK** - Very Low  
**SERVICES** - Mains  
**COVENANTS** - N/A

## DEWBERRY ROAD

Offers Over £300,000

Tucked away on a peaceful residential road, this charming two bedroom semi-detached home offers comfort, practicality and a touch of modern living. Ideal for first time buyers, downsizers or small families, the property combines stylish interiors with a welcoming atmosphere in a sought after village setting.

### FEATURES

- Two Bedroom Semi-Detached Home
- Spacious Lounge With Natural Light
- Open Plan Kitchen Diner
- Integrated Kitchen Appliances
- Downstairs Guest Cloakroom
- Modern Family Bathroom
- Private Lawned Rear Garden
- Driveway For Two Vehicles
- Sought After Village Location

Are you an investor  
interested in expanding your  
portfolio?

Call **0121 775 0101** to provide your  
investment criteria for alerts.



SCAN TO **VIEW OUR**  
**WEEKLY FILMS &**  
**SUBSCRIBE**

### Sneak Peeks

Every week, we unveil "Sneak Peeks," a feature showcasing exclusive properties before they hit Rightmove and other platforms.

### The Landlord Club

Join our Landlord Club for weekly updates on legislation, market trends, and our Letting Director's 'Investment Pick of the Week' for optimal ROI.

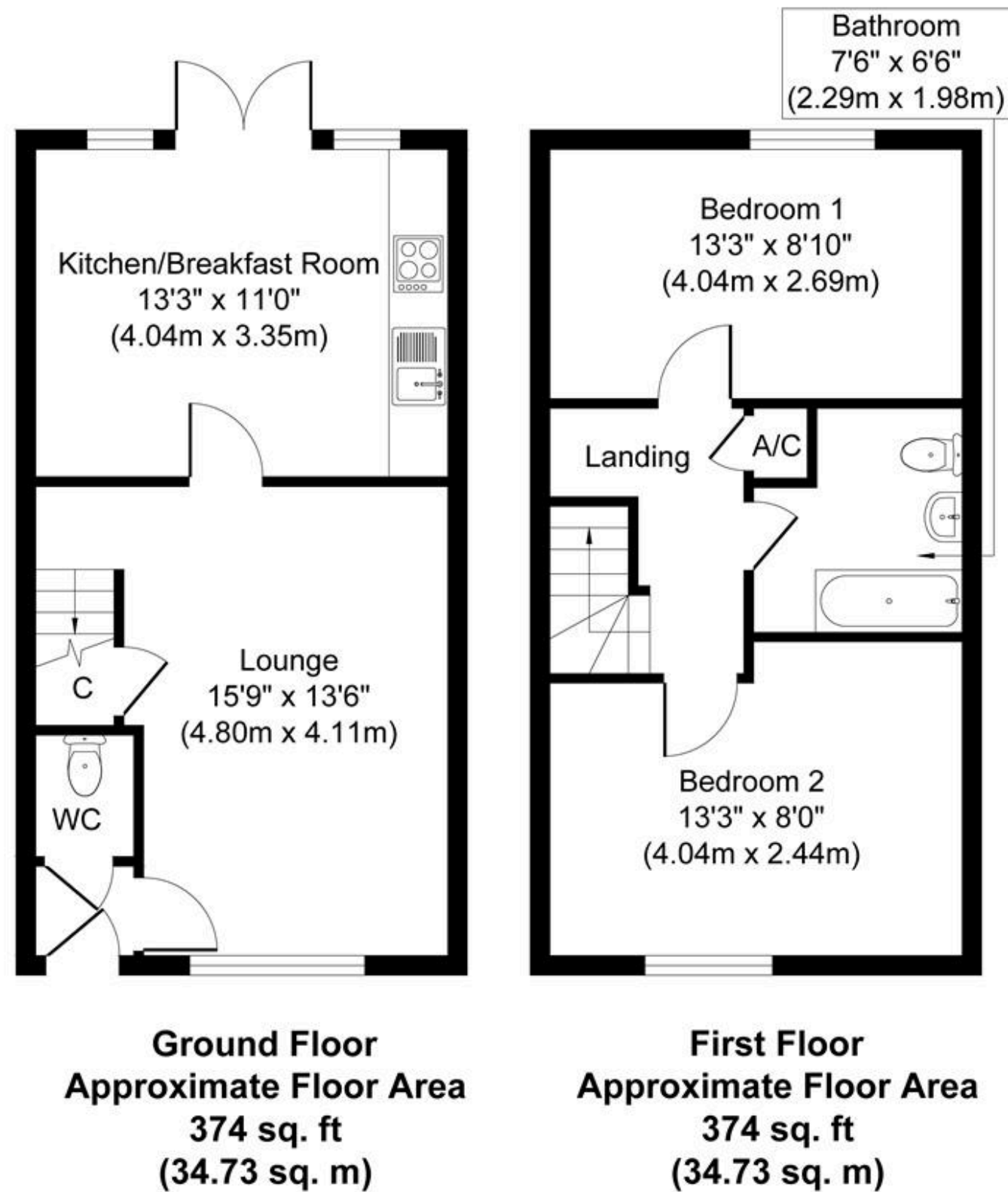
### HTSPMD

Tune into 'How's The Solihull Property Market Dom' weekly for a quick, insightful snapshot of the market.

### The Mortgage Update

Get weekly insights and the best deals with our Mortgage Update, your shortcut to navigating the complex mortgage landscape confidently.





Whilst every attempt has been made to ensure the accuracy of the floor plan contained here, measurements of doors, windows, rooms and any other items are approximate and no responsibility is taken for any error, omission, or mis-statement. The measurements should not be relied upon for valuation, transaction and/or funding purposes. This plan is for illustrative purposes only and should be used as such by any prospective purchaser or tenant.

The services, systems and appliances shown have not been tested and no guarantee as to their operability or efficiency can be given.

Copyright V360 Ltd 2025 | [www.houseviz.com](http://www.houseviz.com)