

Need a Mortgage in principle
to make offers? Call us now
for quick assistance!
0121 775 0101



Do you need to sell?
Start your journey now!
Call us we can help.
0121 775 0101



SCAN FOR MORE INFO
SIZE - 796 Sq Ft
TENURE - Freehold
COUNCIL TAX - Solihull Metropolitan Borough Council - E
BROADBAND - Upload Max 1000Mbps
Download Max 1000Mbps
MOBILE - EE
EPC - C - 73
PARKING - Driveway & Single Garage
FLOODRISK - Very Low
SERVICES - Mains
COVENANTS - N/A

Are you an investor
interested in expanding your
portfolio?

**Call 0121 775 0101 to provide your
investment criteria for alerts.**

ENDERBY CLOSE

Bentley Heath

Situated in a quiet cul-de-sac, this charming detached house offers a delightful blend of comfort and modern living. This home is a must-see for those seeking a peaceful yet connected lifestyle.

FEATURES

- Tastefully Presented Detached House in Quiet Cul-de-Sac
- Bright Living Room
- Kitchen/Diner with French Doors to Garden
- Principal Bedroom with En-Suite Shower Room
- Double Bedroom Two
- Single Third Bedroom/Nursery/Office
- Luxury Modern Family Bathroom
- Driveway Parking & Single Garage
- Private Rear Garden
- Walking Distance to Dorridge Village



SCAN TO **VIEW OUR**
WEEKLY FILMS &
SUBSCRIBE

Sneak Peeks

Every week, we unveil "Sneak Peeks," a feature showcasing exclusive properties before they hit Rightmove and other platforms.

The Landlord Club

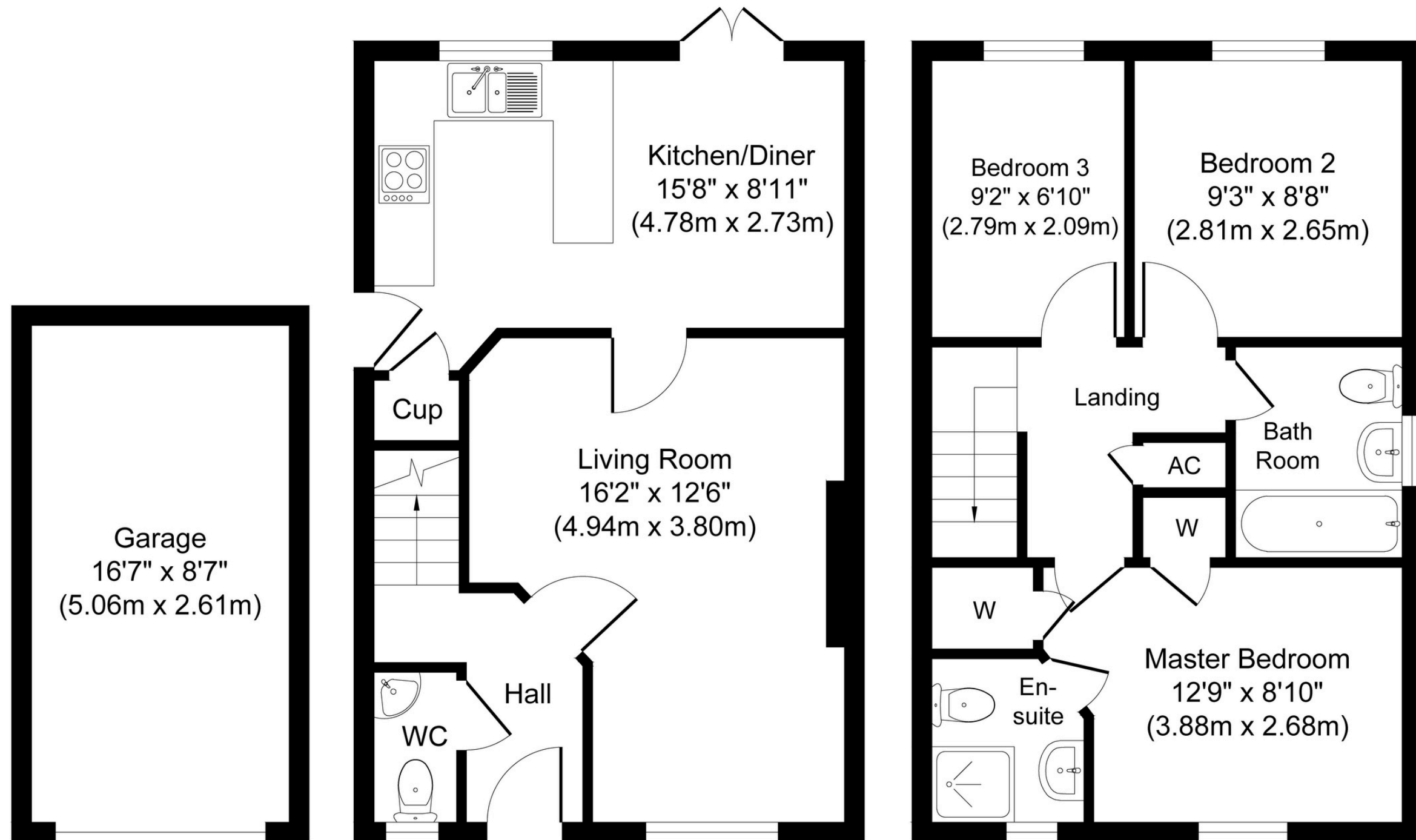
Join our Landlord Club for weekly updates on legislation, market trends, and our Letting Director's 'Investment Pick of the Week' for optimal ROI.

HTSPMD

Tune into 'How's The Solihull Property Market Dom' weekly for a quick, insightful snapshot of the market.

The Mortgage Update

Get weekly insights and the best deals with our Mortgage Update, your shortcut to navigating the complex mortgage landscape confidently.



Garage
Approximate Floor Area
142 sq. ft
(13.22 sq. m)

Ground Floor
Approximate Floor Area
398 sq. ft
(36.99 sq. m)

First Floor
Approximate Floor Area
398 sq. ft
(36.99 sq. m)

Whilst every attempt has been made to ensure the accuracy of the floor plan contained here, measurements of doors, windows, rooms and any other items are approximate and no responsibility is taken for any error, omission, or mis-statement. The measurements should not be relied upon for valuation, transaction and/or funding purposes. This plan is for illustrative purposes only and should be used as such by any prospective purchaser or tenant.

The services, systems and appliances shown have not been tested and no guarantee as to their operability or efficiency can be given.

Copyright V360 Ltd 2025 | www.houseviz.com