

Need a Mortgage in principle
to make offers? Call us now
for quick assistance!
0121 775 0101



Do you need to sell?
Start your journey now!
Call us we can help.
0121 775 0101



SCAN FOR MORE INFO
SIZE - 2041 Sq Ft
TENURE - Freehold
COUNCIL TAX - Solihull Metropolitan Borough Council - F
BROADBAND - Upload Max 1000Mbps
Download Max 1000Mbps
EPC - TBC
PARKING - For at least 5 Cars
FLOODRISK - Very Low
SERVICES - Mains
COVENANTS - N/A

DOVEHOUSE LANE
Solihull, B91

This exquisite detached house offers a perfect blend of modern comfort and classic elegance and has been tastefully decorated throughout, reflecting the character of its era while providing a warm and inviting atmosphere. This delightful home is perfect for families seeking space, comfort and a touch of elegance in a sought-after location.

FEATURES

- Traditional Detached Property
- Beautifully Presented Throughout
- Study/Sitting Room
- Dual Aspect Formal Lounge
- Breakfast Kitchen with Stunning Conservatory Leading Off
- Separate Utility Room with Guest Cloakroom
- Large Principal Bedroom with Balcony
- Double Bedroom 2 with En-Suite Shower Room
- Third Double Bedroom & Fourth Single/Nursery
- Modern Family Shower Room
- Stunning Private Rear Garden with Views Over Golf Course

Are you an investor
interested in expanding your
portfolio?

**Call 0121 775 0101 to provide your
investment criteria for alerts.**



SCAN TO **VIEW OUR
WEEKLY FILMS &
SUBSCRIBE**

Sneak Peeks

Every week, we unveil "Sneak Peeks," a feature showcasing exclusive properties before they hit Rightmove and other platforms.

The Landlord Club

Join our Landlord Club for weekly updates on legislation, market trends, and our Letting Director's 'Investment Pick of the Week' for optimal ROI.

HTSPMD

Tune into 'How's The Solihull Property Market Dom' weekly for a quick, insightful snapshot of the market.

The Mortgage Update

Get weekly insights and the best deals with our Mortgage Update, your shortcut to navigating the complex mortgage landscape confidently.

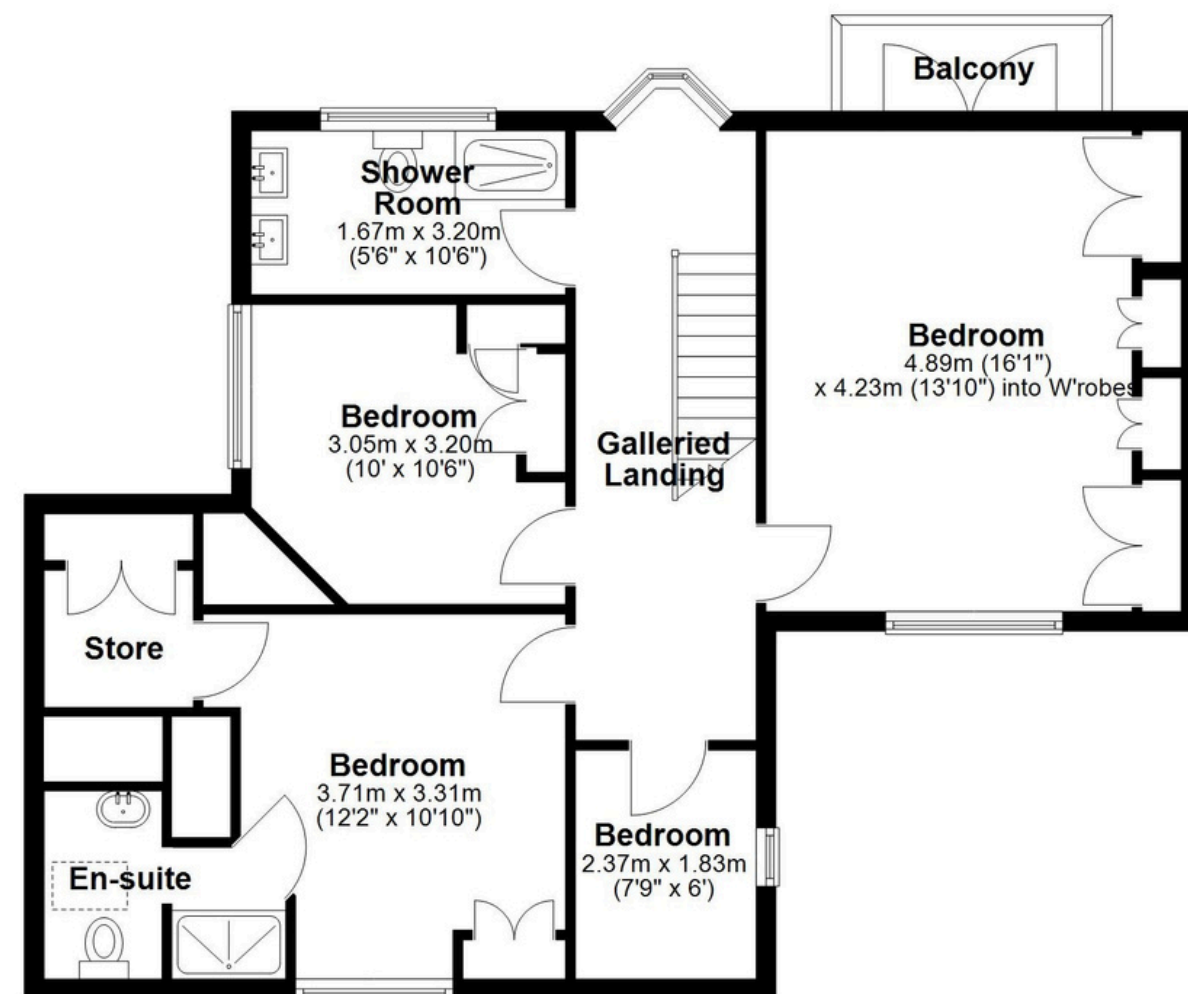
Ground Floor

Approx. 114.0 sq. metres (1227.5 sq. feet)



First Floor

Approx. 75.6 sq. metres (814.2 sq. feet)



Total area: approx. 189.7 sq. metres (2041.7 sq. feet)

This floor plan is for illustration purposes only, this is not intended to be a measured/scaled survey or comply with RICS guidelines. All measurements (including total floor area) openings, orientation and floor area are approximate. No details are guaranteed, they cannot be relied upon for any purpose and do not form part of any agreement. A party must rely upon its own inspection(s). No responsibility is taken for any error, omission, or mis-statement.

Plan produced using PlanUp.