

Need a Mortgage in principle  
to make offers? Call us now  
for quick assistance!  
**0121 775 0101**



Do you need to sell?  
Start your journey now!  
Call us we can help.  
**0121 775 0101**



**SCAN FOR MORE INFO**  
**SIZE** - 778 Sq Ft  
**TENURE** - Freehold  
**COUNCIL TAX** - Solihull Metropolitan Borough Council - C  
**BROADBAND** - Upload Max 1000Mbps  
Download Max 1800Mbps  
**MOBILE** - EE/Three  
**EPC** - TBC  
**PARKING** - For at least 2 Cars  
**FLOODRISK** - Very Low  
**SERVICES** - Mains  
**COVENANTS** - N/A

Are you an investor  
interested in expanding your  
portfolio?

**Call 0121 775 0101 to provide your  
investment criteria for alerts.**

## HOWARD ROAD

Solihull, B92

A beautifully presented semi-detached house offering a delightful blend of modern living and character. The property has been tastefully redecorated throughout, ensuring a fresh and inviting atmosphere. With features that reflect the property's age, this home is a wonderful opportunity for those seeking a blend of comfort and charm in a desirable location.

### FEATURES

- Beautifully Presented Property
- Lounge with Bay Window
- Fitted Kitchen/Dining Room with Patio Doors to Garden
- Principal Double Bedroom
- Second Good Sized Bedroom
- Third Single/Nursery/Office
- Modern Family Bathroom
- Private Rear Garden
- Driveway Parking
- Convenient Location



SCAN TO **VIEW OUR**  
**WEEKLY FILMS &**  
**SUBSCRIBE**

### Sneak Peeks

Every week, we unveil "Sneak Peeks," a feature showcasing exclusive properties before they hit Rightmove and other platforms.

### The Landlord Club

Join our Landlord Club for weekly updates on legislation, market trends, and our Letting Director's 'Investment Pick of the Week' for optimal ROI.

### HTSPMD

Tune into 'How's The Solihull Property Market Dom' weekly for a quick, insightful snapshot of the market.

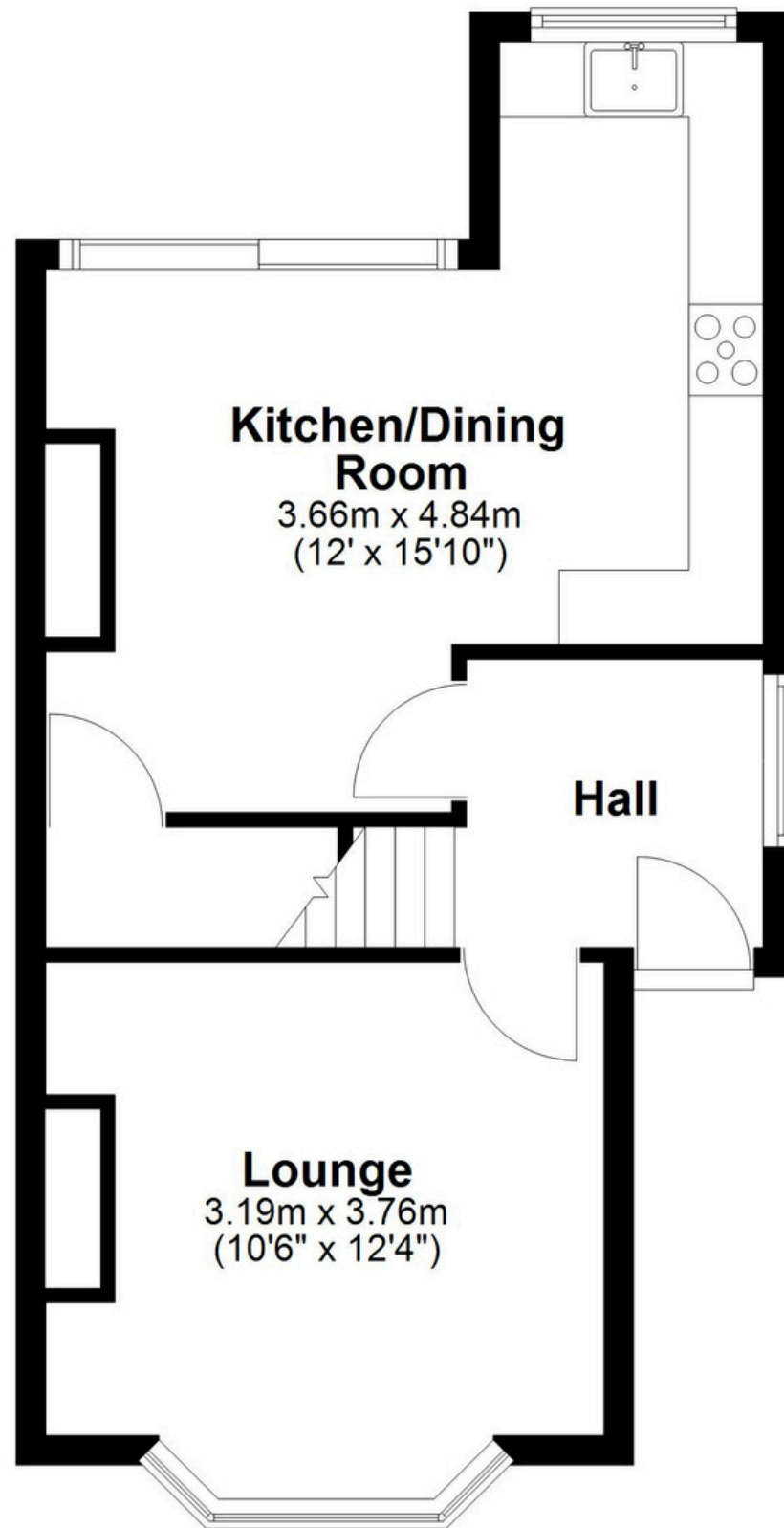
### The Mortgage Update

Get weekly insights and the best deals with our Mortgage Update, your shortcut to navigating the complex mortgage landscape confidently.



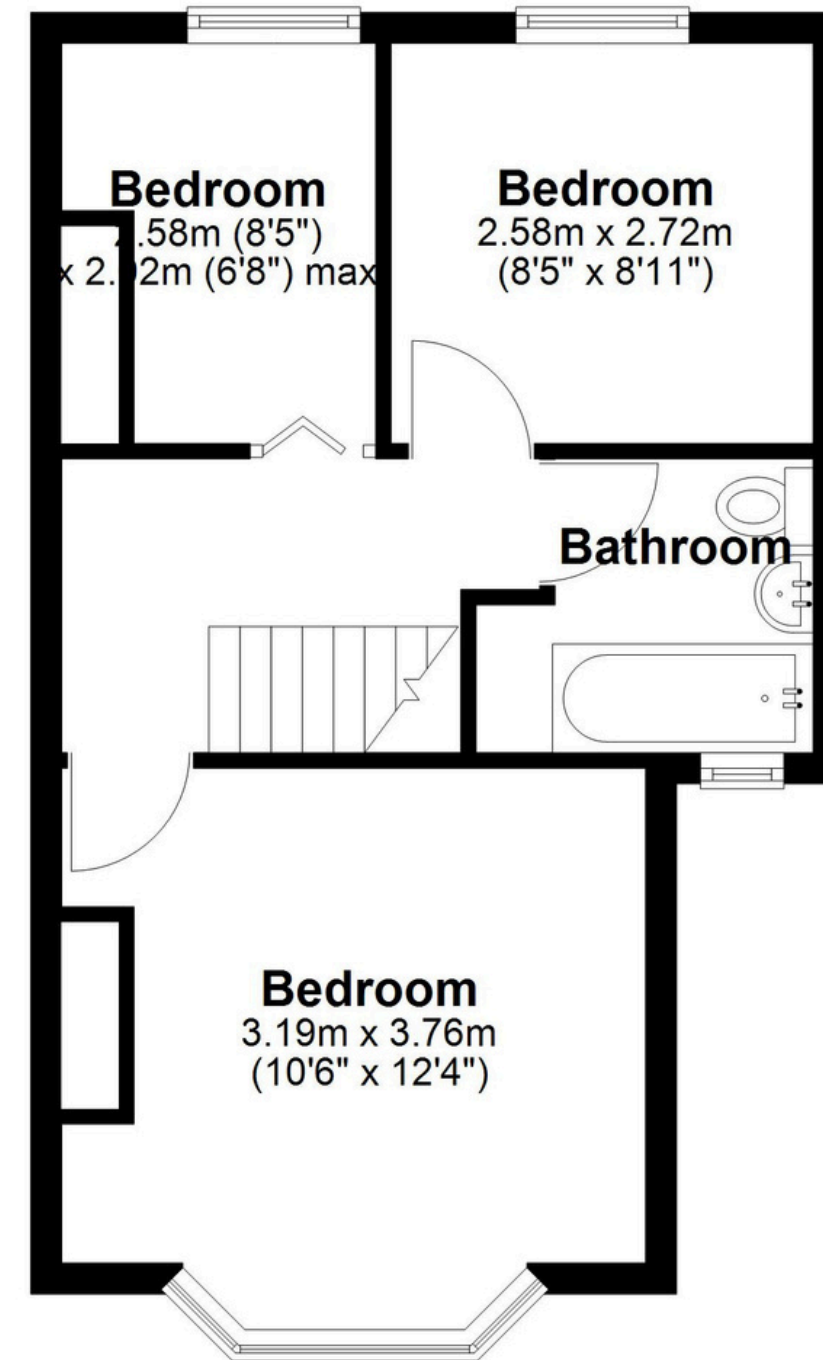
## Ground Floor

Approx. 37.5 sq. metres (403.8 sq. feet)



## First Floor

Approx. 34.8 sq. metres (374.8 sq. feet)



Total area: approx. 72.3 sq. metres (778.6 sq. feet)

This floor plan is for illustration purposes only, this is not intended to be a measured/scaled survey or comply with RICS guidelines. All measurements (including total floor area) openings, orientation and floor area are approximate. No details are guaranteed, they cannot be relied upon for any purpose and do not form part of any agreement. A party must rely upon its own inspection(s). No responsibility is taken for any error, omission, or mis-statement.

Plan produced using PlanUp.