

Need a Mortgage in principle
to make offers? Call us now
for quick assistance!
0121 775 0101



Do you need to sell?
Start your journey now!
Call us we can help.
0121 775 0101



SCAN FOR MORE INFO
SIZE -2524 Sq Ft
TENURE - Freehold
COUNCIL TAX - Solihull Metropolitan Borough Council - F
BROADBAND - Upload Max 1800Mbps
Download Max 1000Mbps
MOBILE - 02
EPC - C - 75
PARKING - Double Garage & Driveway Parking
FLOODRISK - Very Low
SERVICES - Mains
COVENANTS - N/A

POOLFIELD DRIVE
Solihull, B91

Situated in the desirable area of Poolfield Drive, Solihull, this exceptional detached house offers a remarkable blend of space and modern living. Spanning an impressive 2,524 square feet, this family home has been meticulously finished to a high specification, ensuring comfort and style throughout.

FEATURES

- Detached Family Home in Quiet Cul-De-Sac
- Beautifully Presented Throughout
- Dual Aspect Lounge
- Versatile Study/Snug
- Stunning Breakfast Kitchen/Dining/Living Rom & Separate utility Room
- Large Principal Bedroom with Walk-In Wardrobe & En-Suite
- Two Further Double Bedrooms with En-Suite Facilities
- Fourth Single Bedroom & Four Piece Family Bathroom
- Private Wrap Around Garden with Garden Room
- Driveway Parking & Double Garage

Are you an investor
interested in expanding your
portfolio?

**Call 0121 775 0101 to provide your
investment criteria for alerts.**



SCAN TO **VIEW OUR**
WEEKLY FILMS &
SUBSCRIBE

Sneak Peeks

Every week, we unveil "Sneak Peeks," a feature showcasing exclusive properties before they hit Rightmove and other platforms.

The Landlord Club

Join our Landlord Club for weekly updates on legislation, market trends, and our Letting Director's 'Investment Pick of the Week' for optimal ROI.

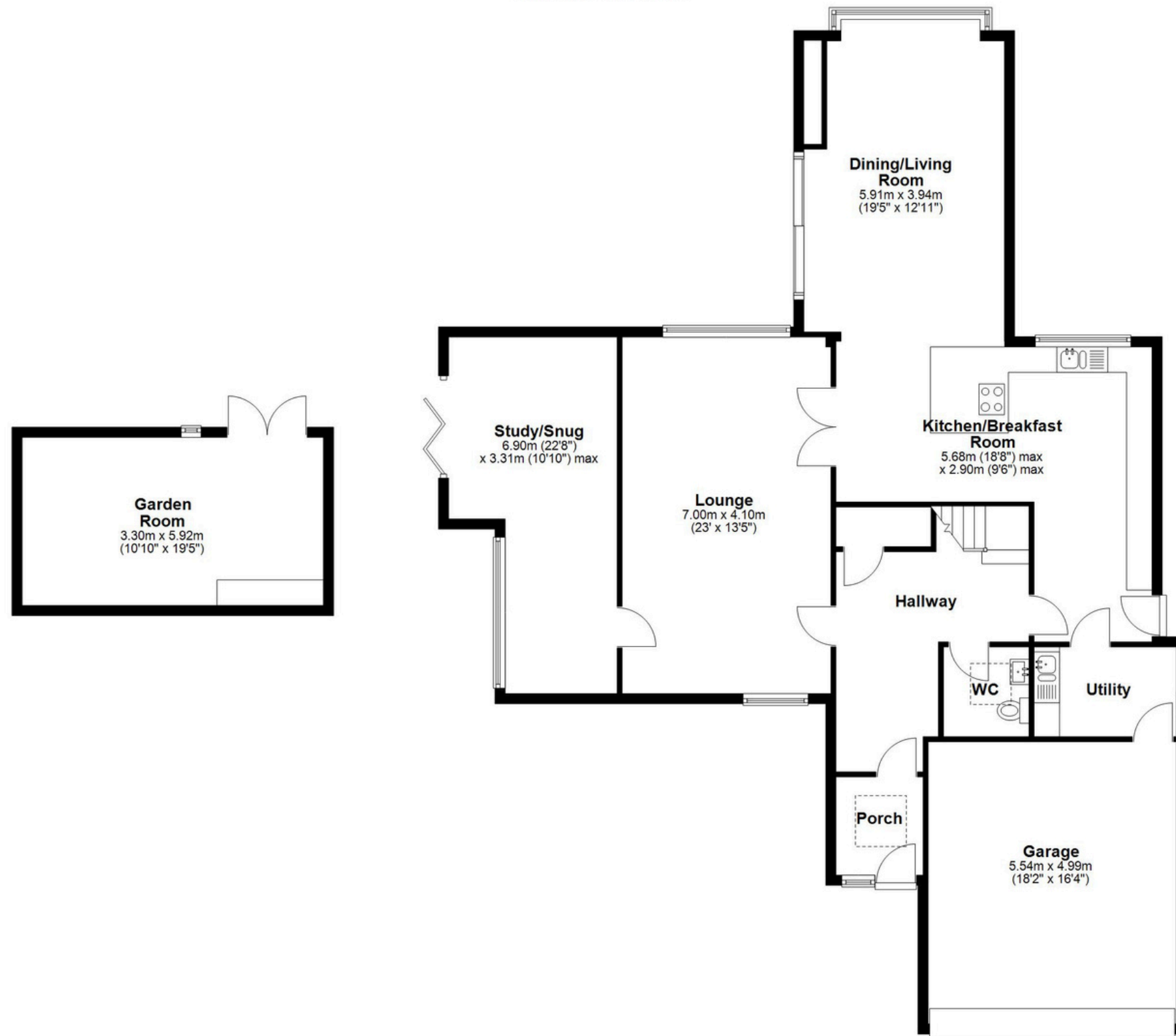
HTSPMD

Tune into 'How's The Solihull Property Market Dom' weekly for a quick, insightful snapshot of the market.

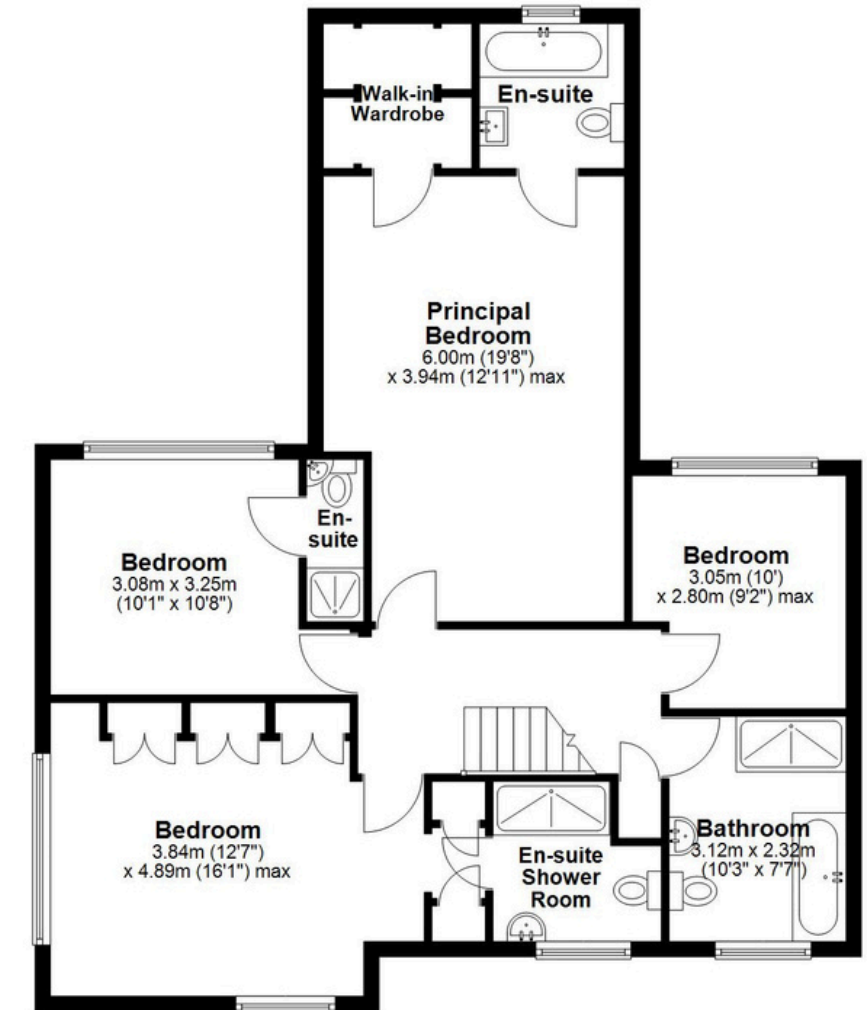
The Mortgage Update

Get weekly insights and the best deals with our Mortgage Update, your shortcut to navigating the complex mortgage landscape confidently.

Ground Floor
Main area: approx. 143.8 sq. metres (1548.0 sq. feet)
Plus garden room, approx. 19.6 sq. metres (210.3 sq. feet)



First Floor
Approx. 90.7 sq. metres (976.4 sq. feet)



Main area: Approx. 234.5 sq. metres (2524.4 sq. feet)
Plus garden room, approx. 19.5 sq. metres (210.3 sq. feet)

This floor plan is for illustration purposes only, this is not intended to be a measured/scaled survey or comply with RICS guidelines. All measurements (including total floor area) openings, orientation and floor area are approximate. No details are guaranteed, they cannot be relied upon for any purpose and do not form part of any agreement. A party must rely upon its own inspection(s). No responsibility is taken for any error, omission, or mis-statement.
Plan produced using PlanUp.