

Need a Mortgage in principle  
to make offers? Call us now  
for quick assistance!  
**0121 775 0101**



Do you need to sell?  
Start your journey now!  
Call us we can help.  
**0121 775 0101**



**SCAN FOR MORE INFO**  
**SIZE** - 1191 Sq Ft  
**TENURE** - Freehold  
**COUNCIL TAX** - Solihull Metropolitan Borough Council - D  
**BROADBAND** - Upload Max 1000Mbps  
Download Max 1000Mbps  
**MOBILE** - O2 Vodafone  
**EPC** - C - 69  
**PARKING** - For at least 3 Cars  
**FLOODRISK** - Very Low  
**SERVICES** - Mains  
**COVENANTS** - N/A

Are you an investor  
interested in expanding your  
portfolio?

**Call 0121 775 0101 to provide your  
investment criteria for alerts.**

## LODE LANE

Solihull, B92

Situated off Lode Lane, this beautifully presented semi-detached house offers a delightful blend of modern living and traditional comfort. The property is perfect for families or professionals seeking a stylish and comfortable home in a desirable location.

### FEATURES

- Tastefully Presented Semi-Detached Family Home
- Dual Aspect Lounge/Dining Room
- Extended Kitchen/Dining Conservatory
- Utility Room with Guest Cloakroom
- Two Good Sized Double Bedrooms
- Third Single/Nursery
- Modern Four Piece Family Bathroom
- Private, Mature Rear Garden
- Driveway for up to Three Cars
- Conveniently Located for Solihull Town Centre



SCAN TO **VIEW OUR  
WEEKLY FILMS &  
SUBSCRIBE**

### Sneak Peeks

Every week, we unveil "Sneak Peeks," a feature showcasing exclusive properties before they hit Rightmove and other platforms.

### The Landlord Club

Join our Landlord Club for weekly updates on legislation, market trends, and our Letting Director's 'Investment Pick of the Week' for optimal ROI.

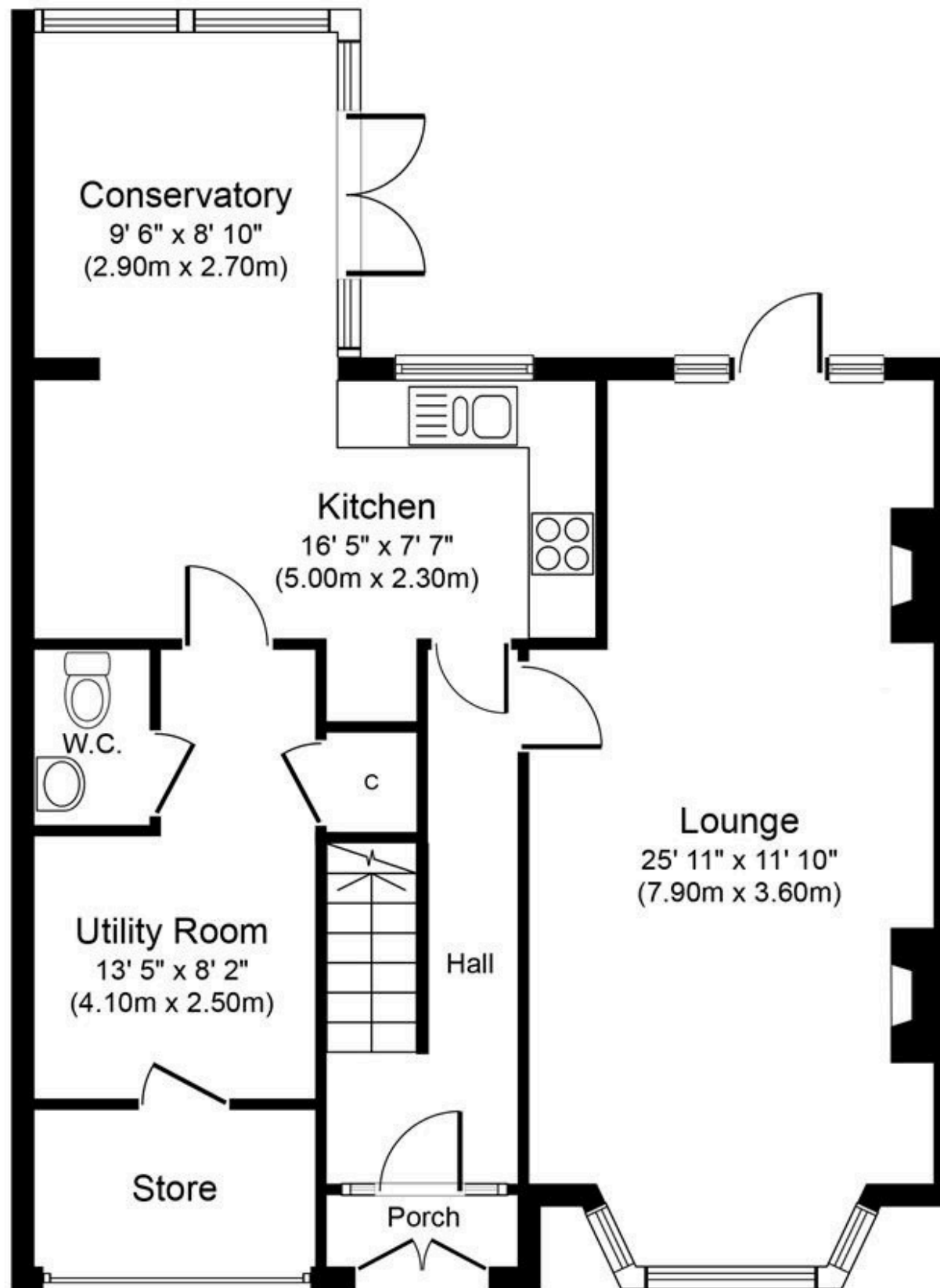
### HTSPMD

Tune into 'How's The Solihull Property Market Dom' weekly for a quick, insightful snapshot of the market.

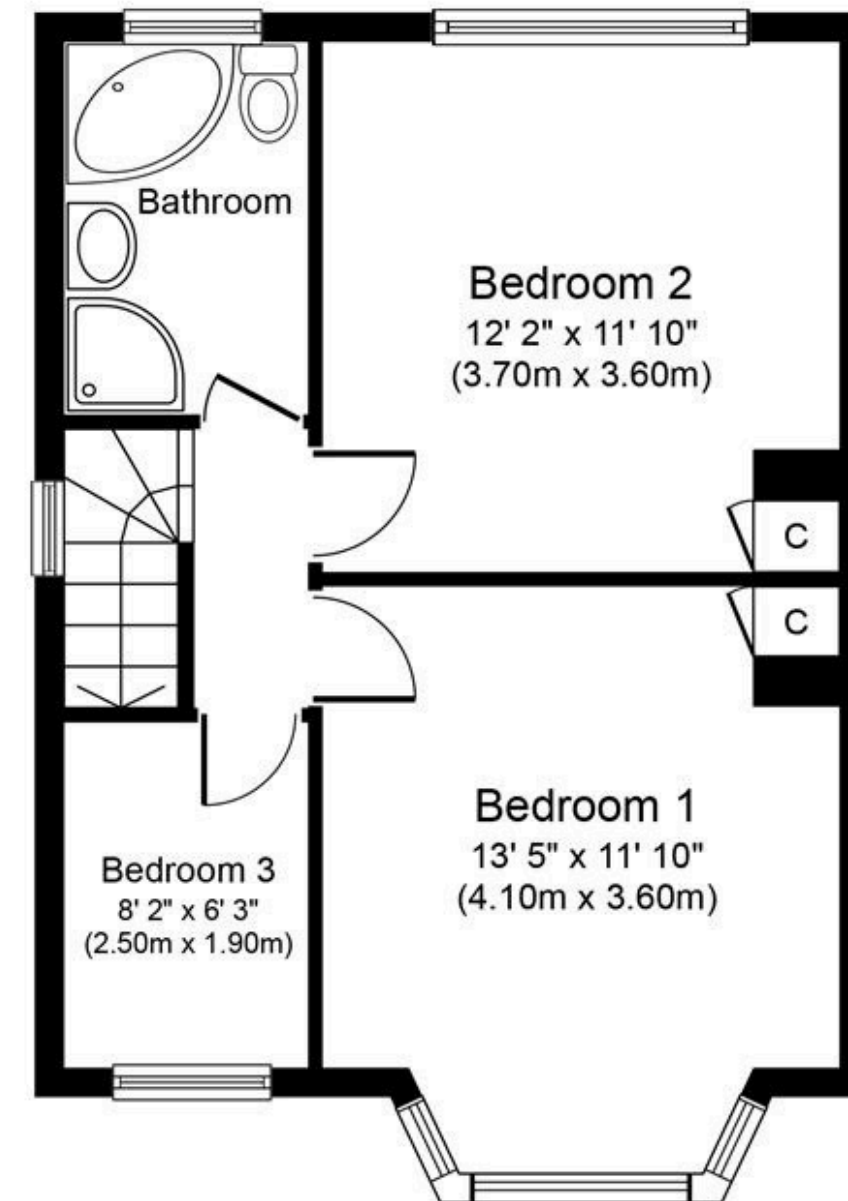
### The Mortgage Update

Get weekly insights and the best deals with our Mortgage Update, your shortcut to navigating the complex mortgage landscape confidently.





**Ground Floor**  
**Approximate Floor Area**  
**758 sq. ft.**  
**(70.4 sq. m.)**



**First Floor**  
**Approximate Floor Area**  
**433 sq. ft.**  
**(40.2 sq. m.)**

Whilst every attempt has been made to ensure the accuracy of the floor plan contained here, measurements of doors, windows, rooms and any other items are approximate and no responsibility is taken for any error, omission, or mis-statement. The measurements should not be relied upon for valuation, transaction and/or funding purposes. This plan is for illustrative purposes only and should be used as such by any prospective purchaser or tenant.

The services, systems and appliances shown have not been tested and no guarantee as to their operability or efficiency can be given.

Copyright V360 Ltd 2024 | [www.houseviz.com](http://www.houseviz.com)