

Need a Mortgage in principle  
to make offers? Call us now  
for quick assistance!  
**0121 775 0101**



Do you need to sell?  
Start your journey now!  
Call us we can help.  
**01564 777 314**



**SCAN FOR MORE INFO**  
**SIZE** - 620 Sq Ft  
**TENURE** - Leasehold  
**SERVICE CHARGE** - £3,207 per annum  
**GROUND RENT** - £75.00 per annum  
**COUNCIL TAX** - Solihull Metropolitan Borough Council - D  
**BROADBAND** - Upload Max 220Mbps  
Download Max 1800Mbps  
**MOBILE** - EE  
**EPC** - C - 73  
**PARKING** - Communal  
**FLOODRISK** - Very Low  
**SERVICES** - Mains  
**COVENANTS** - N/A

Are you an investor  
interested in expanding your  
portfolio?

**Call 01564 777 314 to provide your  
investment criteria for alerts.**

## MICHAEL BLANNING GARDENS

**Dorridge, B93**

A well presented semi-detached bungalow, exclusively for the over 58's, situated in a private development in Dorridge. This home is within walking distance of the village centre amenities and train station and available with no upward chain.

### FEATURES

- No Upward Chain
- Semi-Detached Bungalow Exclusively for the Over 58's
- Spacious Lounge with Conservatory
- Modern Fitted Kitchen
- Principal Double Bedroom
- Versatile Second Bedroom/Dining Room
- Shower Room
- Low Maintenance Garden with Private Communal Garden Beyond
- Ample Parking
- Walking Distance to Dorridge Village Centre & Train Station



SCAN TO **VIEW OUR  
WEEKLY FILMS &  
SUBSCRIBE**



### Sneak Peeks

Every week, we unveil "Sneak Peeks," a feature showcasing exclusive properties before they hit Rightmove and other platforms.



### The Landlord Club

Join our Landlord Club for weekly updates on legislation, market trends, and our Letting Director's 'Investment Pick of the Week' for optimal ROI.



### HTSPMD

Tune into 'How's The Solihull Property Market Dom' weekly for a quick, insightful snapshot of the market.



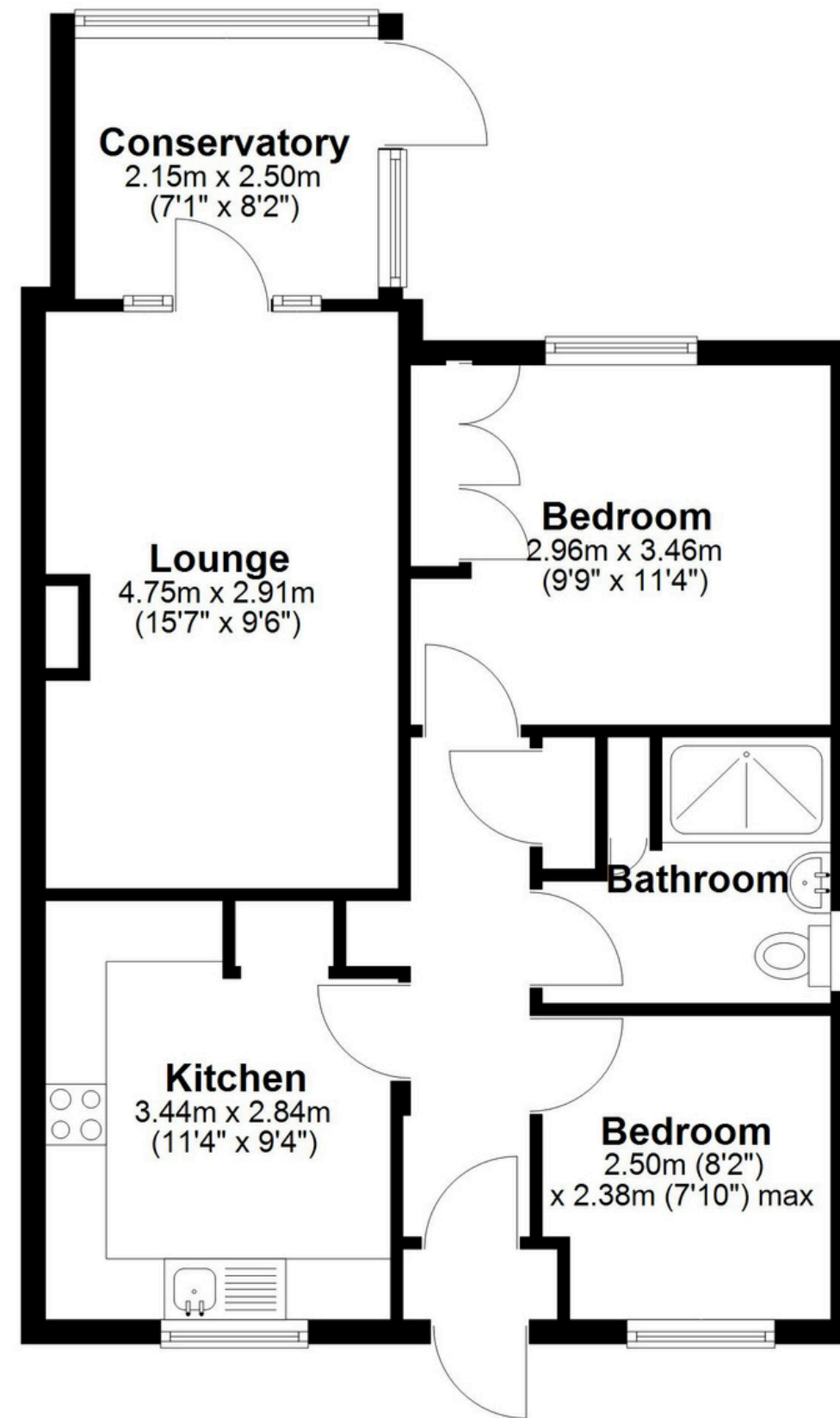
### The Mortgage Update

Get weekly insights and the best deals with our Mortgage Update, your shortcut to navigating the complex mortgage landscape confidently.



## Ground Floor

Approx. 57.7 sq. metres (620.5 sq. feet)



Total area: approx. 57.7 sq. metres (620.5 sq. feet)

This floor plan is for illustration purposes only, this is not intended to be a measured/scaled survey or comply with RICS guidelines. All measurements (including total floor area) openings, orientation and floor area are approximate. No details are guaranteed, they cannot be relied upon for any purpose and do not form part of any agreement. A party must rely upon its own inspection(s). No responsibility is taken for any error, omission, or mis-statement.  
Plan produced using PlanUp.