

Need a Mortgage in principle
to make offers? Call us now
for quick assistance!
0121 775 0101



Do you need to sell?
Start your journey now!
Call us we can help.
01564 777 314



SCAN FOR MORE INFO
SIZE - 1430 Sq Ft
TENURE - Freehold
COUNCIL TAX - Solihull Metropolitan Borough Council - F
BROADBAND - Upload Max 1000Mbps
Download Max 1800Mbps
MOBILE - EE O2
EPC - D - 65
PARKING - 2 Car Driveway
FLOODRISK - Very Low
SERVICES - Mains
COVENANTS - N/A

Are you an investor
interested in expanding your
portfolio?

**Call 01564 777 314 to provide your
investment criteria for alerts.**

KINGSCOTE ROAD

Dorridge, B93

This beautifully presented and extended detached family home offers a perfect blend of modern living and traditional charm. This exceptional property is perfect for those seeking a blend of comfort, style and outdoor space in a desirable location.

FEATURES

- Tastefully Presented Detached Family Home
- Welcoming Entrance Hallway with Guest Cloakroom
- Lounge with Bay Window to Front
- Stunning Open plan Snug/Kitchen/Dining Room with 2 Sets of Bi-Fold Doors
- Principal Bedroom with Luxury En-Suite Shower Room
- Second Double Bedroom with Fitted Wardrobes
- Third Double Bedroom and Fourth Single With Fitted Wardrobes
- Four Piece Family Bathroom
- Exceptional Garden with Summer House/Garden Room
- Excellent Location
- Arden Academy Catchment



SCAN TO **VIEW OUR**
WEEKLY FILMS &
SUBSCRIBE



Sneak Peeks

Every week, we unveil "Sneak Peeks," a feature showcasing exclusive properties before they hit Rightmove and other platforms.



The Landlord Club

Join our Landlord Club for weekly updates on legislation, market trends, and our Letting Director's 'Investment Pick of the Week' for optimal ROI.



HTSPMD

Tune into 'How's The Solihull Property Market Dom' weekly for a quick, insightful snapshot of the market.

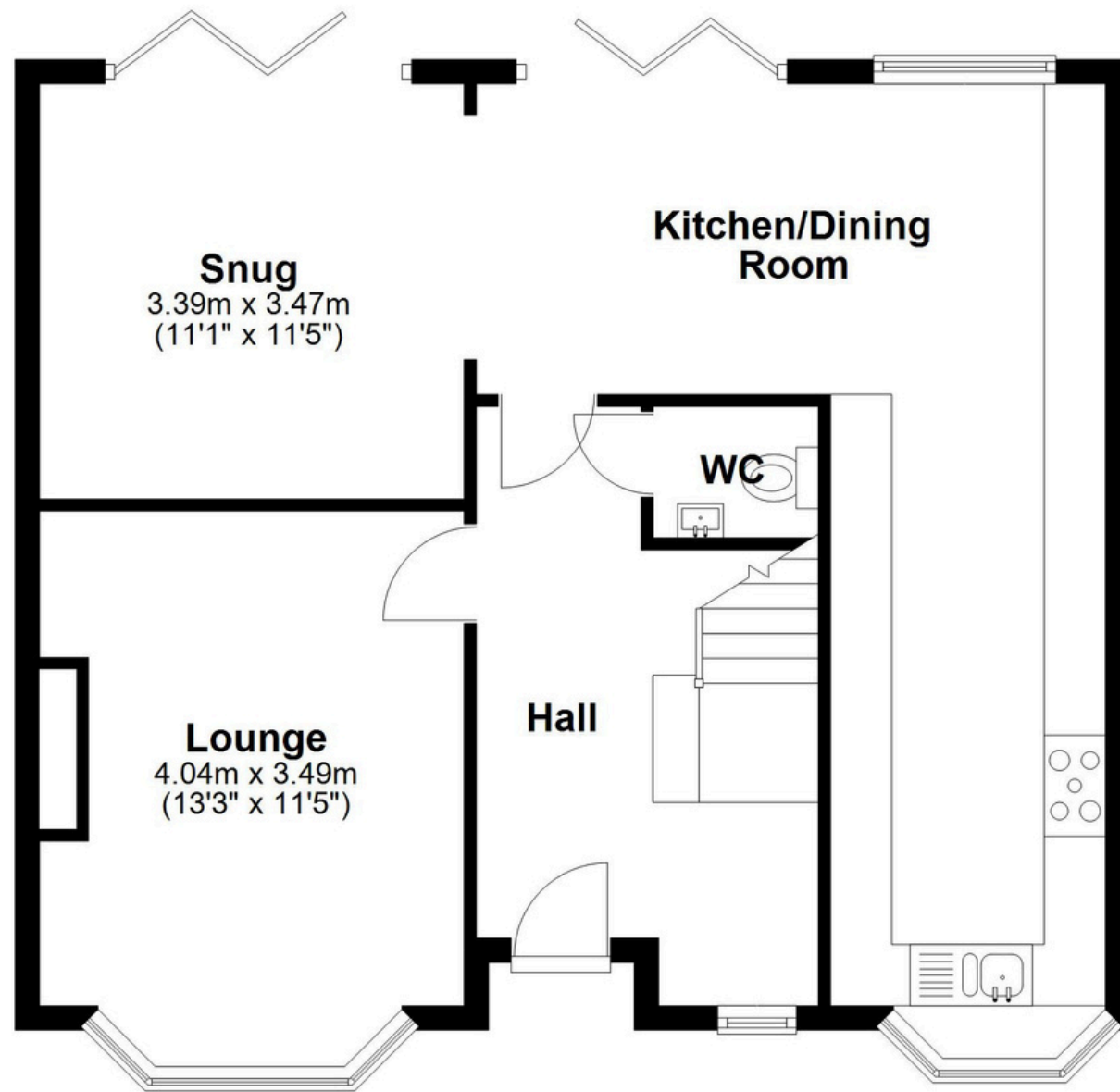


The Mortgage Update

Get weekly insights and the best deals with our Mortgage Update, your shortcut to navigating the complex mortgage landscape confidently.

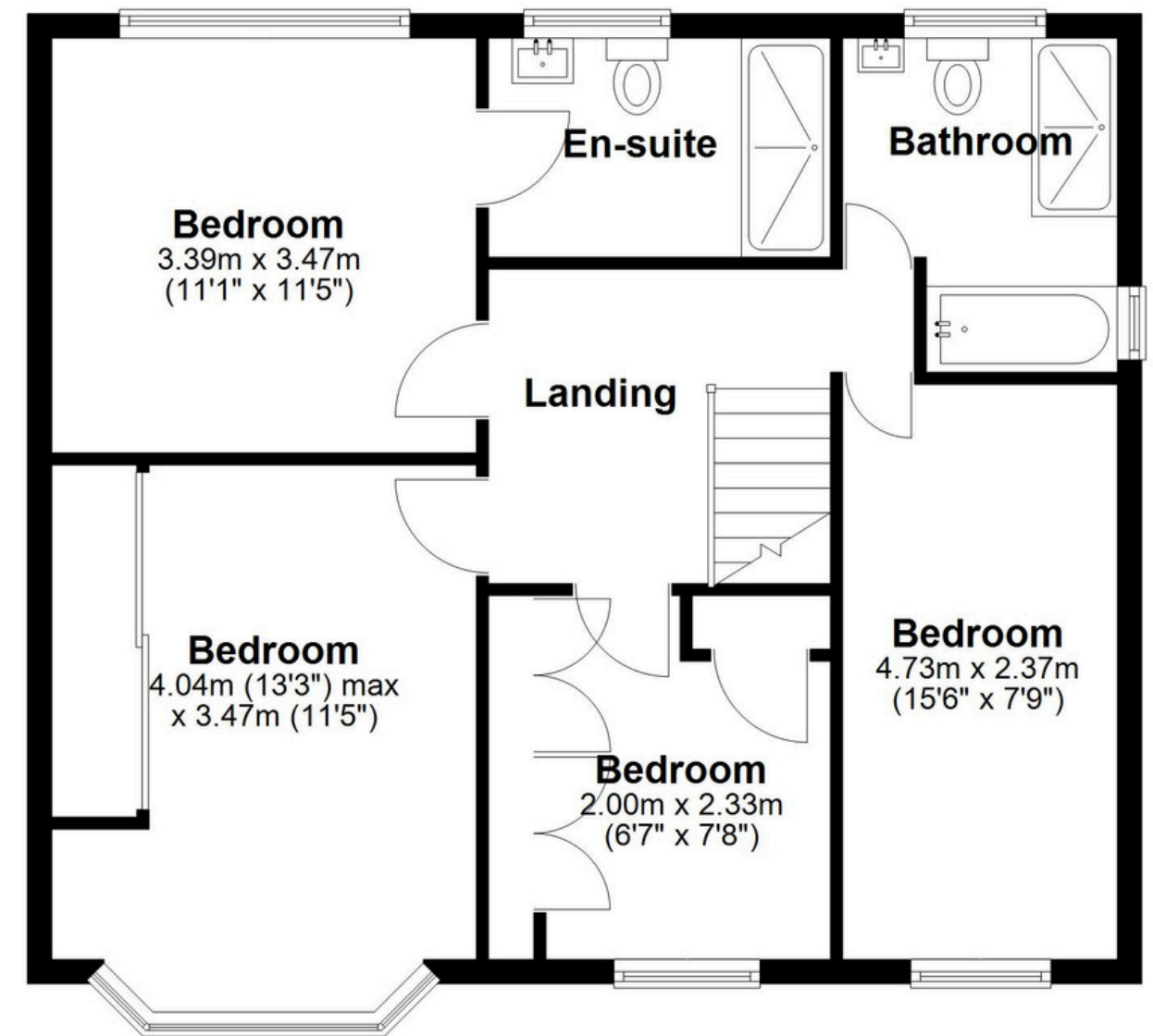
Ground Floor

Approx. 66.1 sq. metres (711.1 sq. feet)



First Floor

Approx. 66.9 sq. metres (719.8 sq. feet)



Total area: approx. 132.9 sq. metres (1430.9 sq. feet)

This floor plan is for illustration purposes only, this is not intended to be a measured/scaled survey or comply with RICS guidelines. All measurements (including total floor area) openings, orientation and floor area are approximate. No details are guaranteed, they cannot be relied upon for any purpose and do not form part of any agreement. A party must rely upon its own inspection(s). No responsibility is taken for any error, omission, or mis-statement.

Plan produced using PlanUp.