

Need a Mortgage in principle
to make offers? Call us now
for quick assistance!
0121 775 0101



Do you need to sell?
Start your journey now!
Call us we can help.
01564 777 314



SCAN FOR MORE INFO
SIZE - 1144 Sq Ft
TENURE - Freehold
COUNCIL TAX - Solihull Metropolitan Borough Council D
BROADBAND - Upload Max 5 Mbps
Superfast 32 Mbps
MOBILE - EE, O2, Vodaphone
EPC - C
PARKING - Off Road Parking
FLOODRISK - No Risk
SERVICES - Mains Water & Gas. Drainage is via a Cesspool.
COVENANTS - N/A

Are you an investor
interested in expanding your
portfolio?

**Call 01564 777 314 to provide your
investment criteria for alerts.**

WARWICK ROAD

Knowle, B93

A beautiful spacious four-bedroom Victorian semi-detached property, enviably located just minutes from Knowle High Street and Arden School. This property has been renovated and refurbished to an exceptional standard, offering the perfect blend of character and period features while delivering modern open plan living.

FEATURES

- Four Bedroom Victorian Semi Detached House
- Renovated and Refurbished Throughout
- A Victorian Property with a High Insulation Value & Zoned Heating System
- Lounge with Feature Fireplace
- Open Plan Kitchen/Dining/Family Room
- Four Bedrooms and Two Bathrooms
- Landscaped Garden and Large Driveway
- Arden Academy Catchment
- Minutes from Knowle High Street
- NO UPWARD CHAIN



SCAN TO VIEW OUR
WEEKLY FILMS &
SUBSCRIBE

Sneak Peeks

Every week, we unveil "Sneak Peeks," a feature showcasing exclusive properties before they hit Rightmove and other platforms.

The Landlord Club

Join our Landlord Club for weekly updates on legislation, market trends, and our Letting Director's 'Investment Pick of the Week' for optimal ROI.

HTSPMD

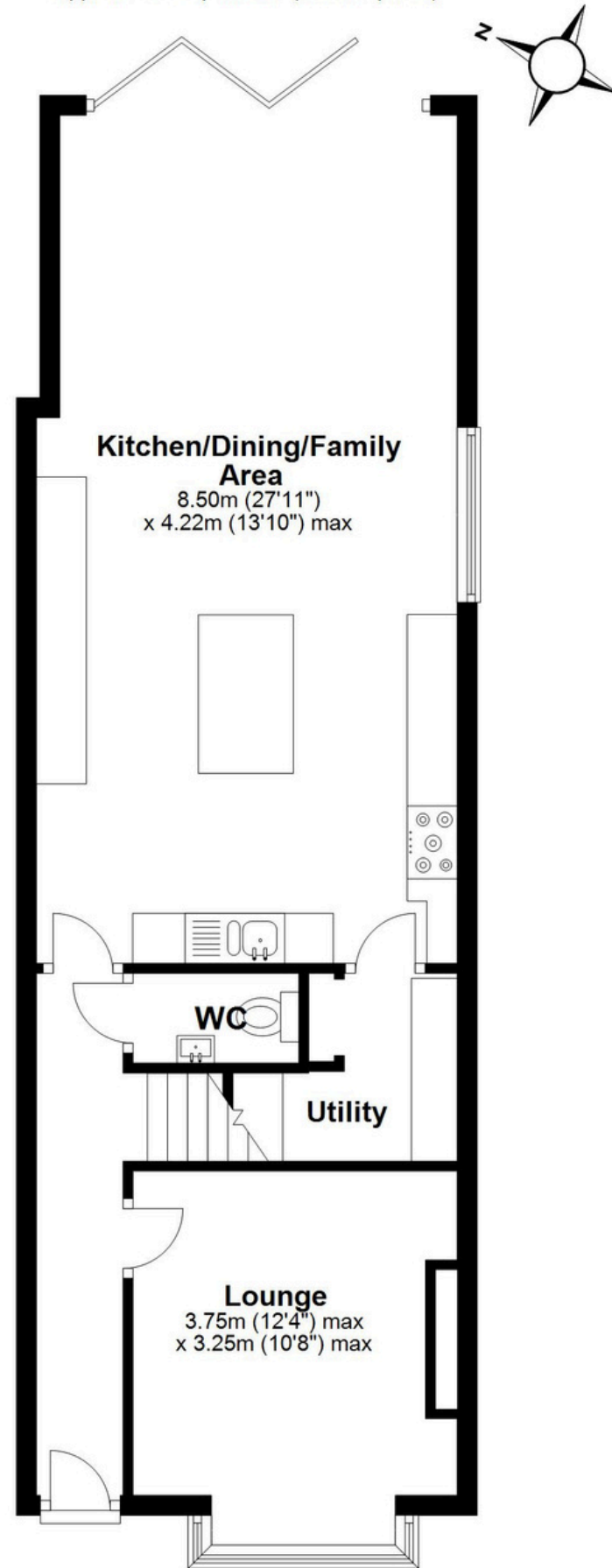
Tune into 'How's The Solihull Property Market Dom' weekly for a quick, insightful snapshot of the market.

The Mortgage Update

Get weekly insights and the best deals with our Mortgage Update, your shortcut to navigating the complex mortgage landscape confidently.

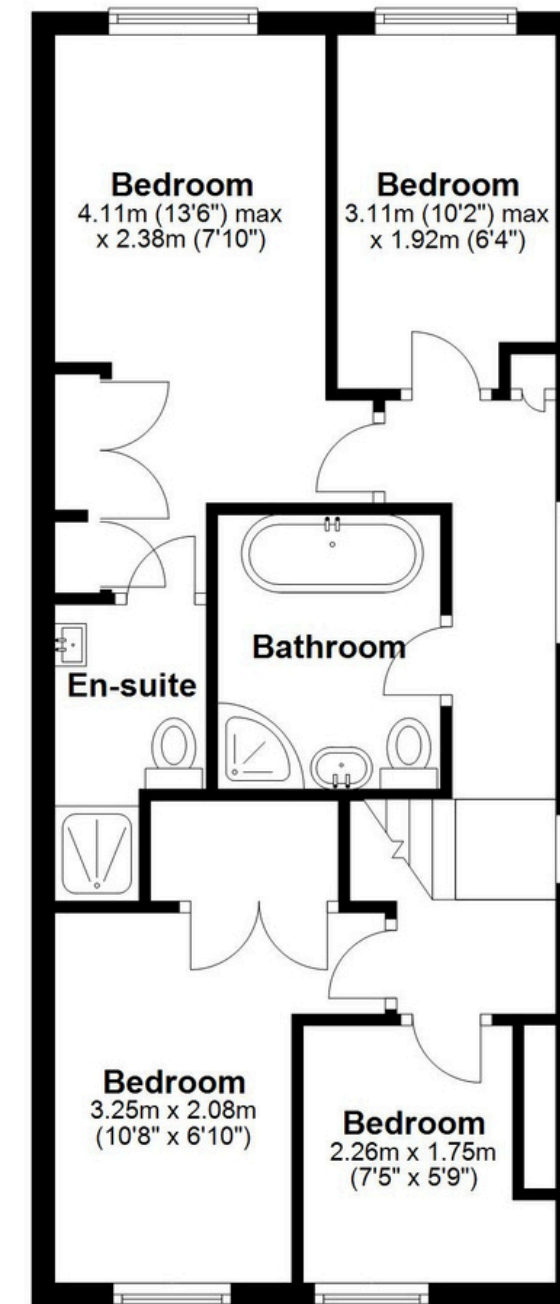
Ground Floor

Approx. 58.6 sq. metres (630.2 sq. feet)



First Floor

Approx. 47.8 sq. metres (514.3 sq. feet)



Total area: approx. 106.3 sq. metres (1144.5 sq. feet)

This floor plan is for illustration purposes only, this is not intended to be a measured/scaled survey or comply with RICS guidelines. All measurements (including total floor area) openings, orientation and floor area are approximate. No details are guaranteed, they cannot be relied upon for any purpose and do not form part of any agreement. A party must rely upon its own inspection(s). No responsibility is taken for any error, omission, or mis-statement.
Plan produced using PlanUp.