



DM&Co.
— SALES & LETTINGS —

**Lickey House 45
Twatling Road
B45 8HS**

This Stunning 5-Bedroom Art Deco Home Is Nestled In A Gated Plot & Seamlessly Combines Original 1930s Charm With Modern Sophistication. Available From 2nd June On A Furnished Basis.



DETAILS

Your Text Here



OUTSIDE

Your Text Here

VIEWINGS

At short notice with DM & Co. Homes on
0121 775 0101 or by email
lettings@dmandcohomes.co.uk



GENERAL INFORMATION

Your Text Here



OTHER SERVICES

DM & Co are pleased to offer the following services:-

Residential Lettings: If you are considering letting your property, please contact the office on 0121 775 0101.

Mortgage Services: If you would like advice on the best mortgages available, please contact us on 0121 775 0101.



Agents Note: Whilst every care has been taken to prepare these sales particulars, they are for guidance purposes only. All measurements are approximate and are for general guidance purposes only and whilst every care has been taken to ensure their accuracy, they should not be relied upon and potential buyers are advised to recheck the measurements.

FEATURES

- Stunning Art Deco 5-Bedroom Family Home
- Immaculate Presentation Throughout
- Spacious Open-Plan Living Area
- Wellness Room With Infrared Sauna
- Principal Suite With Balcony & Dressing Room
- Beautifully Maintained Private Rear Garden
- Driveway Parking For Multiple Cars & Double Garage
- Holding Deposit - £1384.00
- Security Deposit - £6923.07
- Available 2nd June On A Furnished Basis

SIZE

Total - 5242.00 sq ft

TENURE

Your Text Here

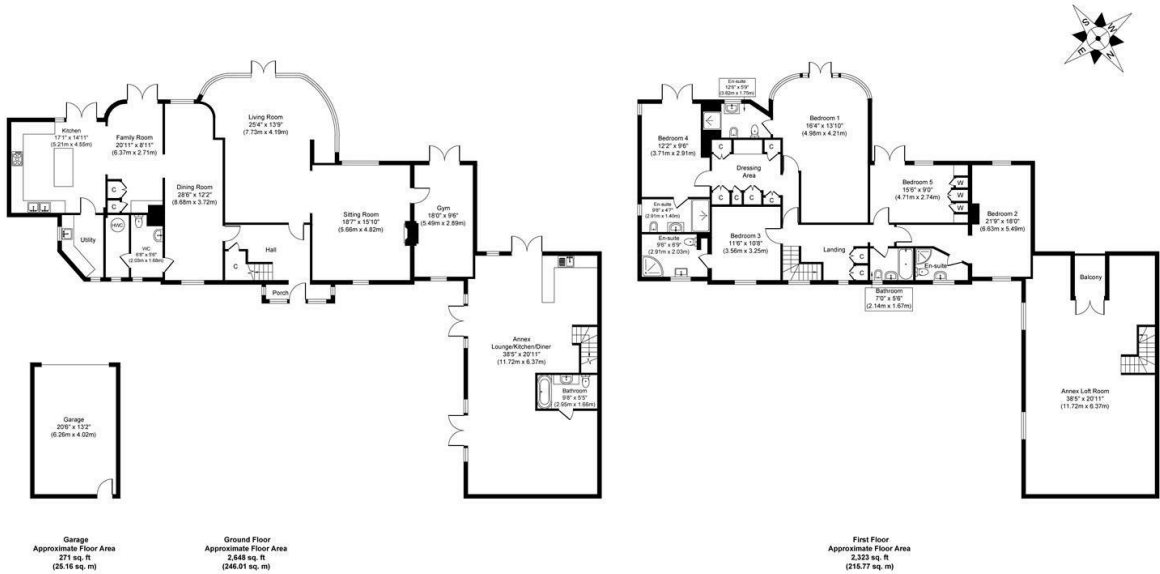
VIEWING

Book a viewing with Sole Agents DM & Co.
Premium by phone or email:

📞 0121 775 0101

@ lettings@dmandcohomes.co.uk

Agents Note: Whilst every care has been taken to prepare these salesparticulars, they are for guidance purposes only. All measurements are approximate and are for general guidance purposes only and whilst every care has been taken to ensure their accuracy, they should not be relied upon and potential buyers are advised to recheck the measurements



Whilst every attempt has been made to ensure the accuracy of the floor plan contained here, measurements of doors, windows, rooms and any other items are approximate and no responsibility is taken for any error, omission, or mis-statement. The measurements should not be relied upon for valuation, transaction and/or funding purposes. This plan is for illustrative purposes only and should be used as such by any prospective purchaser or tenant. The services, systems and appliances shown have not been tested and no guarantee as to their operability or efficiency can be given.
Copyright V360 Ltd 2024 | www.houseviz.com

