

Need a Mortgage in principle  
to make offers? Call us now  
for quick assistance!  
**0121 775 0101**



Do you need to sell?  
Start your journey now!  
Call us we can help.  
**0121 775 0101**



**SCAN FOR MORE INFO**  
**SIZE** - 1483 Sq Ft  
**TENURE** - Freehold  
**COUNCIL TAX** - Solihull Metropolitan Borough Council - F  
**BROADBAND** - Upload Max 1000Mbps  
Download Max 1800Mbps  
**MOBILE** - 02  
**EPC** - 79 - C  
**PARKING** - For at least 4 Cars  
**FLOODRISK** - Very Low  
**SERVICES** - Mains  
**COVENANTS** - N/A

Are you an investor  
interested in expanding your  
portfolio?

**Call 0121 775 0101 to provide your  
investment criteria for alerts.**

## DOVECOTE CLOSE

**Solihull, B91**

Situated in a tranquil cul-de-sac off Dovehouse Lane, this remarkable detached house on Dovecote Close offers a perfect blend of comfort and modern living. This delightful home combines modern amenities with a peaceful setting, making it a must-see for those seeking a stylish and comfortable living space in Solihull.

### FEATURES

- Detached Family Home in Quiet Cul-de-Sac
- Dual Aspect Lounge with Lantern Ceiling Light
- Spacious Modern Kitchen with Dining/Family Room
- Principal Bedroom with Wardrobes & En-Suite
- Double Bedroom 2 with Fitted Wardrobes
- Double Bedroom 3 & Fourth Study/Bedroom
- Family Bathroom
- Ample Driveway Parking & Oversized Single Garage
- Private Rear Garden
- High Tech Alarm/CCTV System
- Convenient Location
- Furnished or Unfurnished Option Available



SCAN TO **VIEW OUR**  
**WEEKLY FILMS &**  
**SUBSCRIBE**

### **Sneak Peeks**

Every week, we unveil "Sneak Peeks," a feature showcasing exclusive properties before they hit Rightmove and other platforms.

### **The Landlord Club**

Join our Landlord Club for weekly updates on legislation, market trends, and our Letting Director's 'Investment Pick of the Week' for optimal ROI.

### **HTSPMD**

Tune into 'How's The Solihull Property Market Dom' weekly for a quick, insightful snapshot of the market.

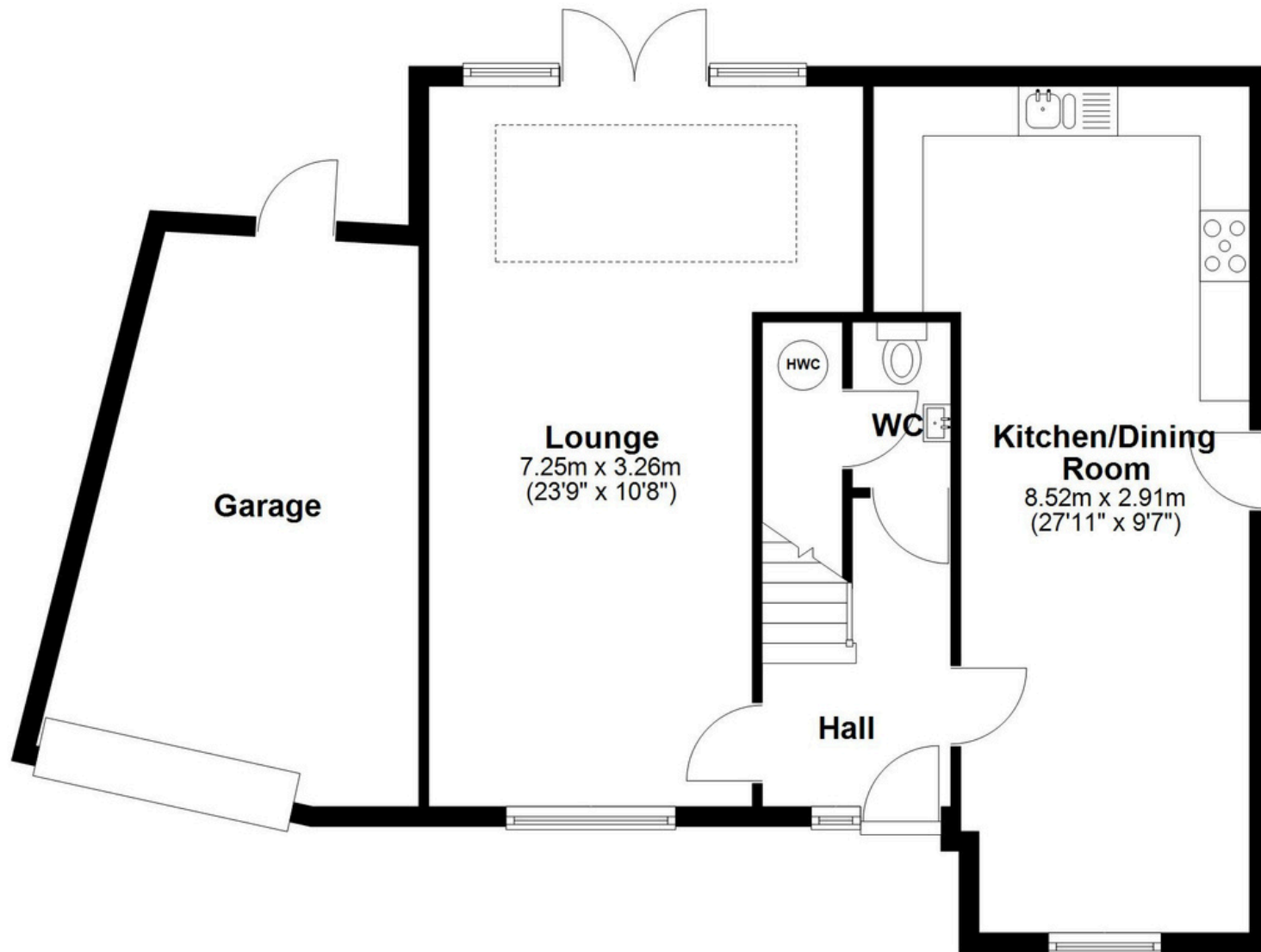
### **The Mortgage Update**

Get weekly insights and the best deals with our Mortgage Update, your shortcut to navigating the complex mortgage landscape confidently.



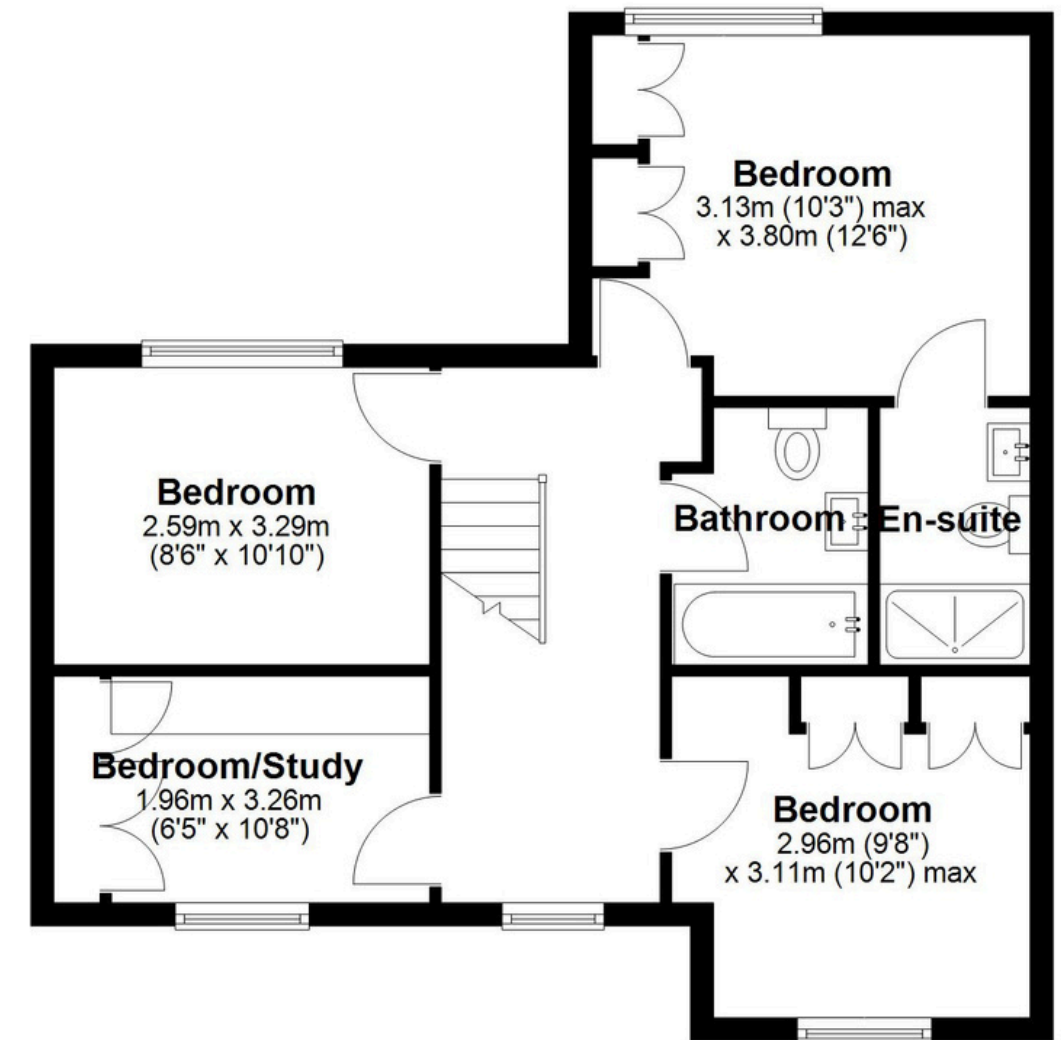
## Ground Floor

Approx. 84.7 sq. metres (911.7 sq. feet)



## First Floor

Approx. 53.2 sq. metres (572.3 sq. feet)



Total area: approx. 137.9 sq. metres (1483.9 sq. feet)

This floor plan is for illustration purposes only, this is not intended to be a measured/scaled survey or comply with RICS guidelines. All measurements (including total floor area) openings, orientation and floor area are approximate. No details are guaranteed, they cannot be relied upon for any purpose and do not form part of any agreement. A party must rely upon its own inspection(s). No responsibility is taken for any error, omission, or mis-statement.

Plan produced using PlanUp.