

Need a Mortgage in principle
to make offers? Call us now
for quick assistance!
0121 775 0101



Do you need to sell?
Start your journey now!
Call us we can help.
01564 777 314



SCAN FOR MORE INFO
SIZE - 2089Sq Ft
TENURE - Freehold
COUNCIL TAX - Solihull Metropolitan Borough Council - E
BROADBAND - Upload Max 220 Mbps
Download Max 1800 Mbps
EPC - 58 - D
PARKING - Ample Driveway Parking & Double Garage
FLOODRISK - Very Low
SERVICES - Mains
COVENANTS - N/A

Aylesbury Road Hockley Heath, B94

Nestled on Aylesbury Road in the charming village of Hockley Heath, Solihull, this detached house presents a remarkable opportunity for those looking to create their dream home. Spanning an impressive 2,089 square feet, the property is set back from the road, offering a sense of privacy and tranquillity. This delightful home, while requiring some updating, is perfectly positioned to take advantage of its serene location and offers the potential to create a truly personalised living space

FEATURES

- Spacious Three Bedroom Detached House
- In Need of Modernisation Throughout
- Two Large Reception Rooms
- Kitchen/Diner with Garden Views
- Conservatory
- Family Bathroom
- Ample Driveway parking & Double Garage
- Private South Facing Garden
- Countryside Views to the Front
- Offered with No Upward Chain

Are you an investor
interested in expanding your
portfolio?

**Call 01564 777 314 to provide your
investment criteria for alerts.**



SCAN TO **VIEW OUR
WEEKLY FILMS &
SUBSCRIBE**

Sneak Peeks

Every week, we unveil "Sneak Peeks," a feature showcasing exclusive properties before they hit Rightmove and other platforms.

The Landlord Club

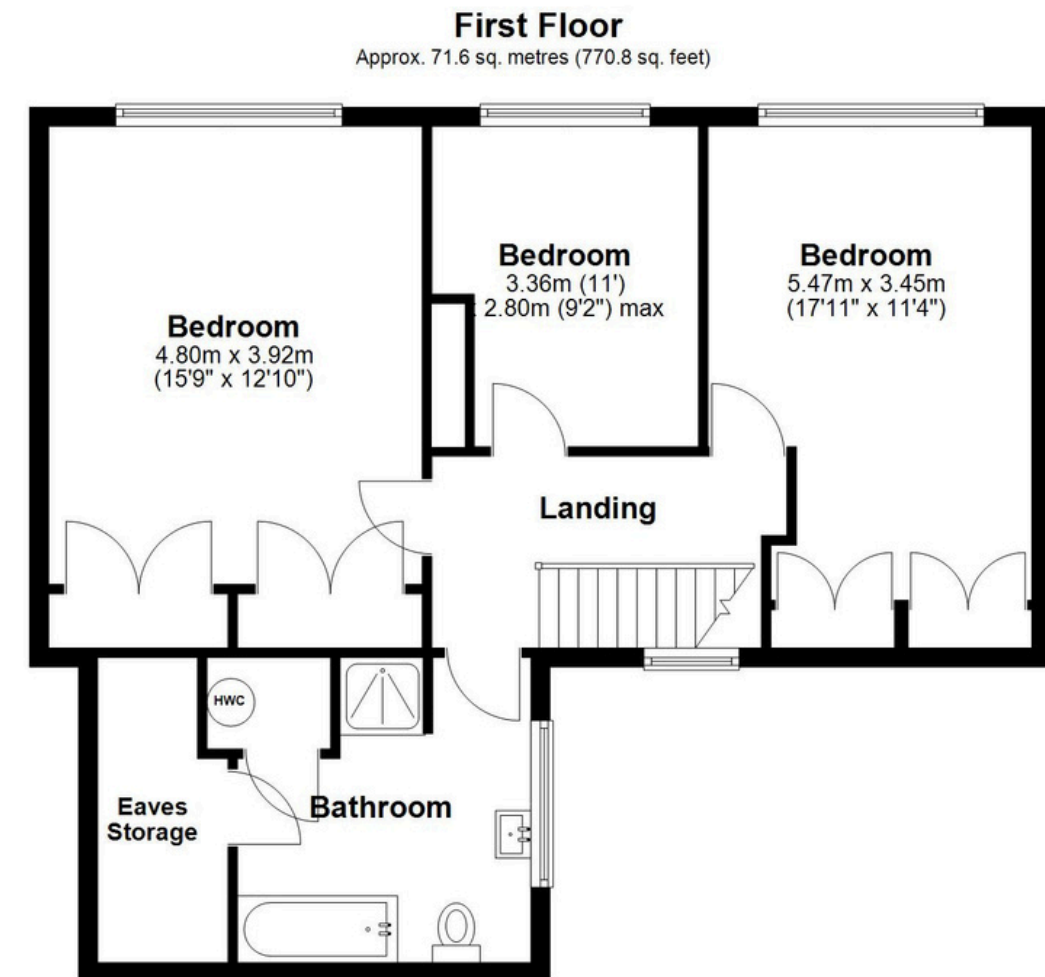
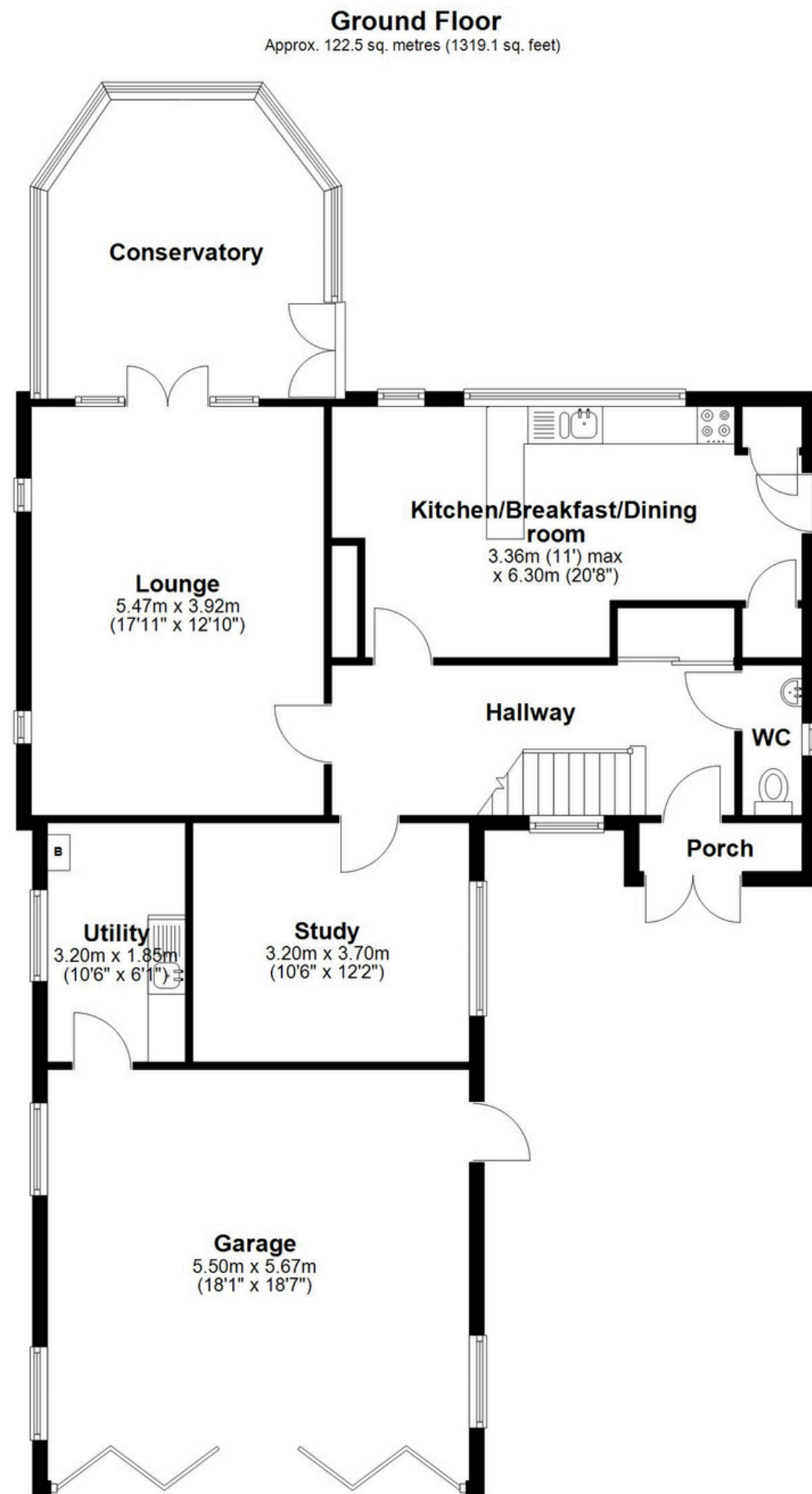
Join our Landlord Club for weekly updates on legislation, market trends, and our Letting Director's 'Investment Pick of the Week' for optimal ROI.

HTSPMD

Tune into 'How's The Solihull Property Market Dom' weekly for a quick, insightful snapshot of the market.

The Mortgage Update

Get weekly insights and the best deals with our Mortgage Update, your shortcut to navigating the complex mortgage landscape confidently.



Total area: approx. 194.2 sq. metres (2089.8 sq. feet)

This floor plan is for illustration purposes only, this is not intended to be a measured/scaled survey or comply with RICS guidelines. All measurements (including total floor area) openings, orientation and floor area are approximate. No details are guaranteed, they cannot be relied upon for any purpose and do not form part of any agreement. A party must rely upon its own inspection(s). No responsibility is taken for any error, omission, or mis-statement.
Plan produced using PlanUp.