



**DM&Co.**  
— SALES & LETTINGS —

**46 White House Way  
B91 1SE**

This Gorgeous Ground Floor Apartment Has  
Been Recently Re-Decorated & Is Located A  
Stones Throw From Solihull Town Centre.  
Available End Of April On An Unfurnished Basis.



## DETAILS

\*New carpets are to be installed on 28th April 2025\*

This beautiful 2-bedroom apartment is situated within walking distance to Solihull Town Centre & is available at the end of April on an unfurnished basis.

Access to the apartment is via a secure communal entrance & the apartment is located on the ground floor.

Entering into the apartment you are welcomed a spacious hallway which has access to two double bedrooms, the main bedroom benefitting from built-in-wardrobes, & a neutrally decorated bathroom.

At the end of the hallway you have a spacious living area which large windows which allows floods of light in & a modern kitchen with integrated appliances.

Solihull Council Tax - Band D



## OUTSIDE

This apartment benefits from well maintained communal gardens, a single garage & communal parking.

## VIEWINGS

At short notice with DM & Co. Homes on  
0121 775 0101 or by email  
[lettings@dmandcohomes.co.uk](mailto:lettings@dmandcohomes.co.uk)



## GENERAL INFORMATION

This property is located within walking distance to Solihull Town Centre, Solihull train station & has fantastic transport links to Birmingham City Centre.

Mobile Coverage In Your Area - EE, Vodafone, Three, O2

Broadband Coverage In Your Area - Openreach, Virgin Media, CityFibre

## OTHER SERVICES

DM & Co are pleased to offer the following services:-

**Residential Lettings:** If you are considering letting your property, please contact the office on 0121 775 0101.

**Mortgage Services:** If you would like advice on the best mortgages available, please contact us on 0121 775 0101.

Agents Note: Whilst every care has been taken to prepare these sales particulars, they are for guidance purposes only. All measurements are approximate and are for general guidance purposes only and whilst every care has been taken to ensure their accuracy, they should not be relied upon and potential buyers are advised to recheck the measurements.

FEATURES

- Beautifully Presented Ground Floor Apartment
- Bright & Airy Living Area
- Kitchen With Integrated Appliances
- Two Double Bedrooms
- Neautrally Decorated Bathroom
- Single Garage
- Walking Distance To Solihull Town Centre
- Holding Deposit - £298.00
- Security Deposit - £1494.23
- Available End Of April On An Unfurnished Basis

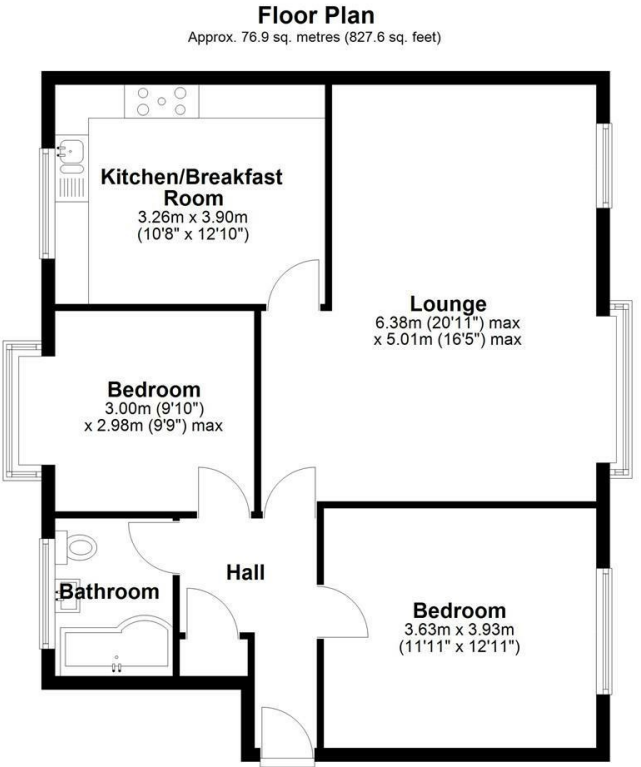
VIEWING

Book a viewing with Sole Agents DM & Co.  
Premium by phone or email:

📞 0121 775 0101

@ lettings@dmandcohomes.co.uk

Agents Note: Whilst every care has been taken to prepare these salesparticulars, they are for guidance purposes only. All measurements are approximate and are for general guidance purposes only and whilst every care has been taken to ensure their accuracy, they should not be relied upon and potential buyers are advised to recheck the measurements



Total area: approx. 76.9 sq. metres (827.6 sq. feet)

This floor plan is for illustration purposes only, this is not intended to be a measured/scaled survey or comply with RICS guidelines. All measurements (including total floor area) openings, orientation and floor area are approximate. No details are guaranteed, they cannot be relied upon for any purpose and do not form part of any agreement. A party must rely upon its own inspection(s). No responsibility is taken for any error, omission, or mis-statement.  
Plan produced using PlanUp.

