

Need a Mortgage in principle
to make offers? Call us now
for quick assistance!
0121 775 0101



Do you need to sell?
Start your journey now!
Call us we can help.
01564 777 314



SCAN FOR MORE INFO
SIZE - 1527Sq Ft
TENURE - Freehold
COUNCIL TAX - Solihull Metropolitan Borough Council - F
BROADBAND - Upload Max 1000Mbps
Download Max 1000 Mbps
MOBILE - O2
EPC - D - 63
PARKING - Ample Driveway Parking
FLOODRISK - Very Low
SERVICES - Mains
COVENANTS - N/A

Are you an investor
interested in expanding your
portfolio?

**Call 01564 777 314 to provide your
investment criteria for alerts.**

11 Hallcroft Way

Knowle, B93

Situated in a quiet cul-de-sac location, the house offers a wonderful opportunity for families seeking a spacious and versatile home. This property not only offers a comfortable family living space but also presents potential for extension, subject to planning permission. With its prime location and ample amenities, this home is a must-see for those looking to settle in a vibrant community.

FEATURES

- Spacious Detached Family Home
- Potential to Extend (STPP)
- 2 Reception Rooms
- Modern Fitted Breakfast Kitchen
- Principal Bedroom with Fitted Wardrobes
- Second Double Bedroom & Two Further Single Bedrooms
- Family Bathroom
- Private Rear Garden
- Driveway Parking & Tandem Length Garage
- Walking Distance to Knowle
- Arden Academy Catchment



SCAN TO **VIEW OUR
WEEKLY FILMS &
SUBSCRIBE**



Sneak Peeks

Every week, we unveil "Sneak Peeks," a feature showcasing exclusive properties before they hit Rightmove and other platforms.



The Landlord Club

Join our Landlord Club for weekly updates on legislation, market trends, and our Letting Director's 'Investment Pick of the Week' for optimal ROI.



HTSPMD

Tune into 'How's The Solihull Property Market Dom' weekly for a quick, insightful snapshot of the market.

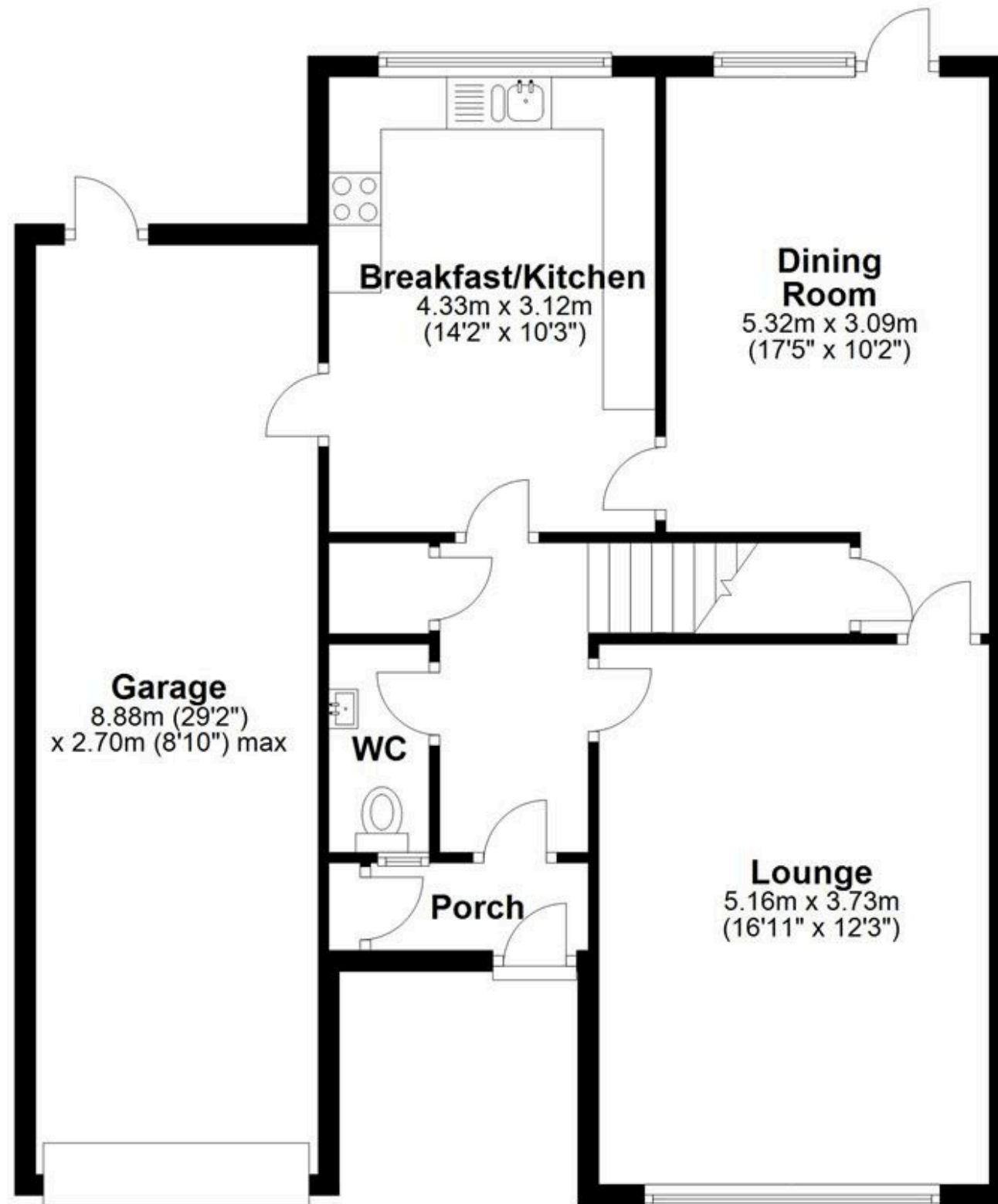


The Mortgage Update

Get weekly insights and the best deals with our Mortgage Update, your shortcut to navigating the complex mortgage landscape confidently.

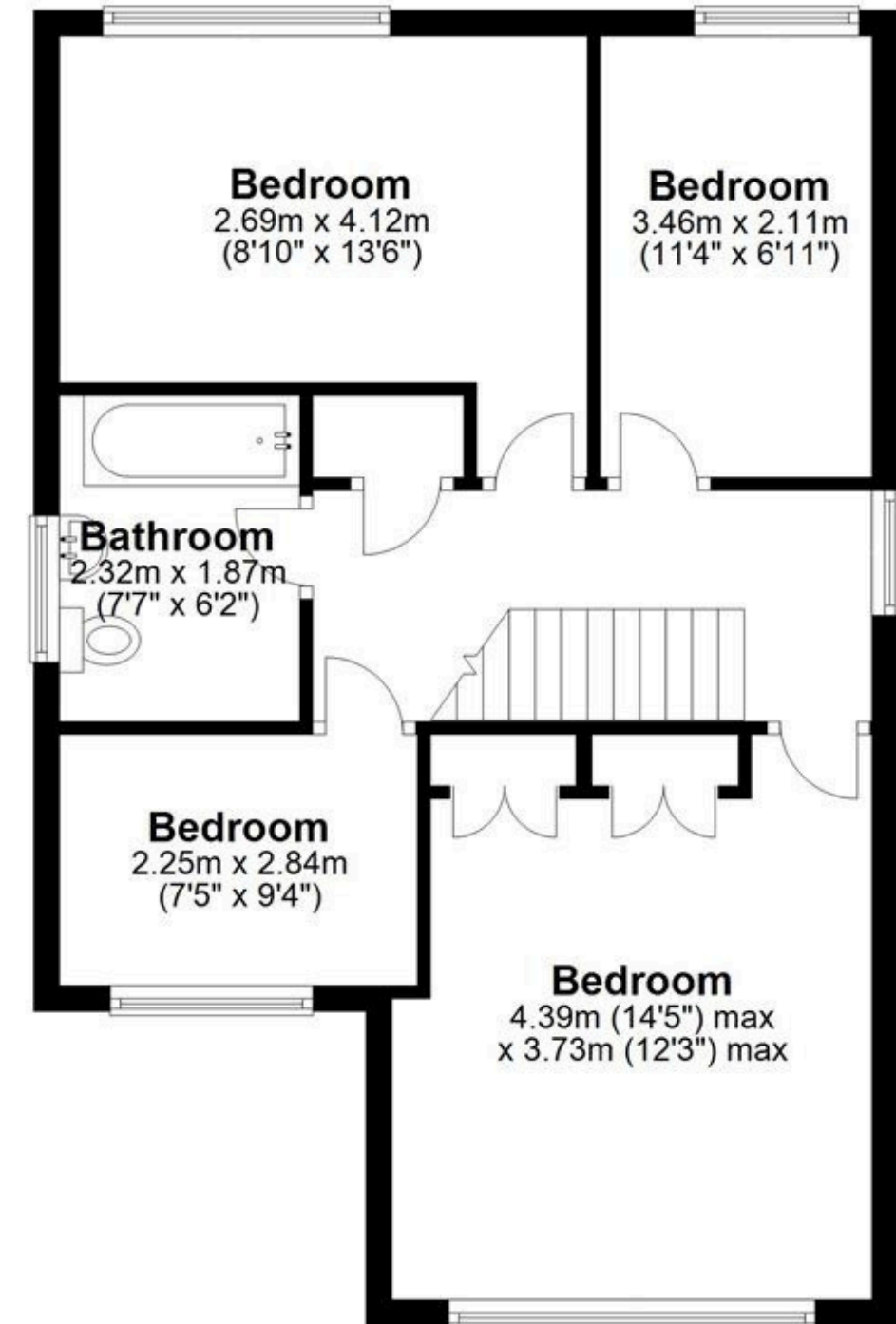
Ground Floor

Approx. 85.6 sq. metres (921.2 sq. feet)



First Floor

Approx. 56.3 sq. metres (606.3 sq. feet)



Total area: approx. 141.9 sq. metres (1527.4 sq. feet)

This floor plan is for illustration purposes only, this is not intended to be a measured/scaled survey or comply with RICS guidelines. All measurements (including total floor area) openings, orientation and floor area are approximate. No details are guaranteed, they cannot be relied upon for any purpose and do not form part of any agreement. A party must rely upon its own inspection(s). No responsibility is taken for any error, omission, or mis-statement.
Plan produced using PlanUp.