

Need a Mortgage in principle
to make offers? Call us now
for quick assistance!
0121 775 0101



Do you need to sell?
Start your journey now!
Call us we can help.
0121 775 0101



SCAN FOR MORE INFO
SIZE - 2078 Sq Ft
TENURE - Freehold
COUNCIL TAX - Solihull Metropolitan Borough Council - G
BROADBAND - Upload Max 220Mbps
Download Max 1800Mbps
EPC - C - 72
PARKING - For at least 2 Cars
FLOODRISK - Very Low
SERVICES - Mains
COVENANTS - N/A

THREE ACRES LANE

Dickens Heath, B90

Welcome to this exceptional four-bedroom detached home, perfectly positioned on the exclusive Three Acres Lane, a private road in one of the most desirable locations. This home offers a harmonious blend of comfort, luxury and practicality an exceptional choice for those seeking a truly unique living experience.

FEATURES

- Executive Detached Family Home
- Beautifully Presented Throughout
- Dual Aspect Lounge
- Study
- Stunning Breakfast Kitchen/Dining/Family Room
- Principal Bedroom with En-Suite Shower Room
- Three Further Good Sized Double Bedrooms
- Family Bathroom
- Rear Garden with Gym/Games Room
- Quiet Private Road

Are you an investor
interested in expanding your
portfolio?

Call 0121 775 0101 to provide your investment criteria for alerts.



SCAN TO **VIEW OUR**
WEEKLY FILMS &
SUBSCRIBE

Sneak Peeks

Every week, we unveil "Sneak Peeks," a feature showcasing exclusive properties before they hit Rightmove and other platforms.

The Landlord Club

Join our Landlord Club for weekly updates on legislation, market trends, and our Letting Director's 'Investment Pick of the Week' for optimal ROI.

HTSPMD

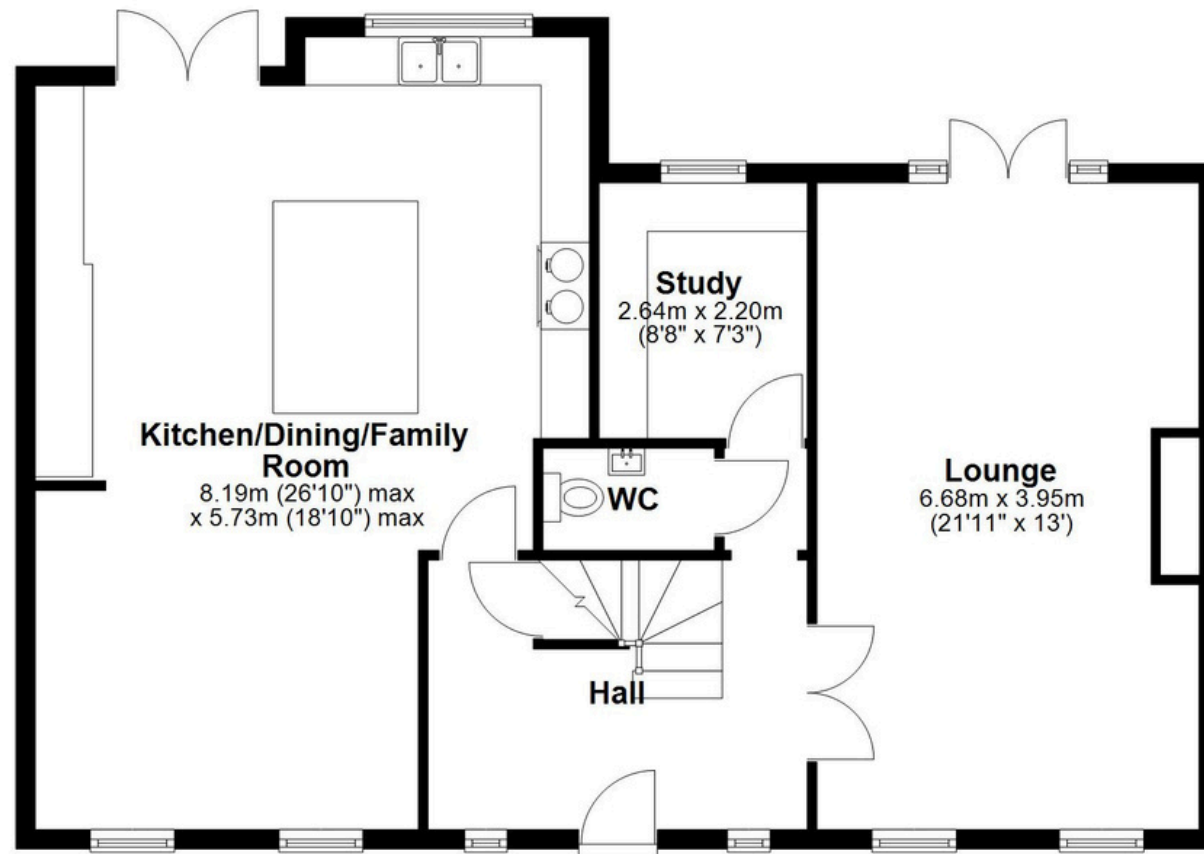
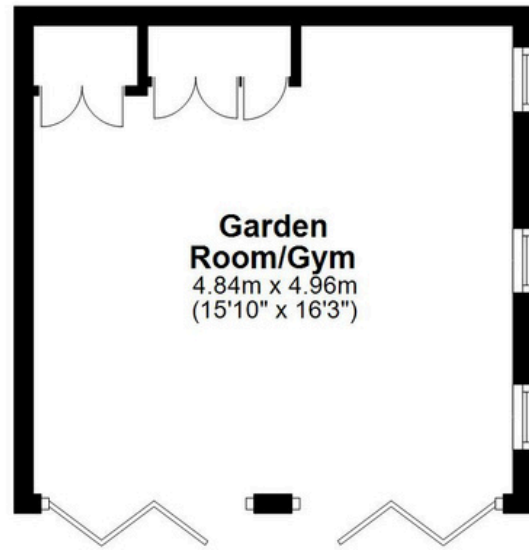
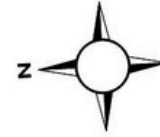
Tune into 'How's The Solihull Property Market Dom' weekly for a quick, insightful snapshot of the market.

The Mortgage Update

Get weekly insights and the best deals with our Mortgage Update, your shortcut to navigating the complex mortgage landscape confidently.

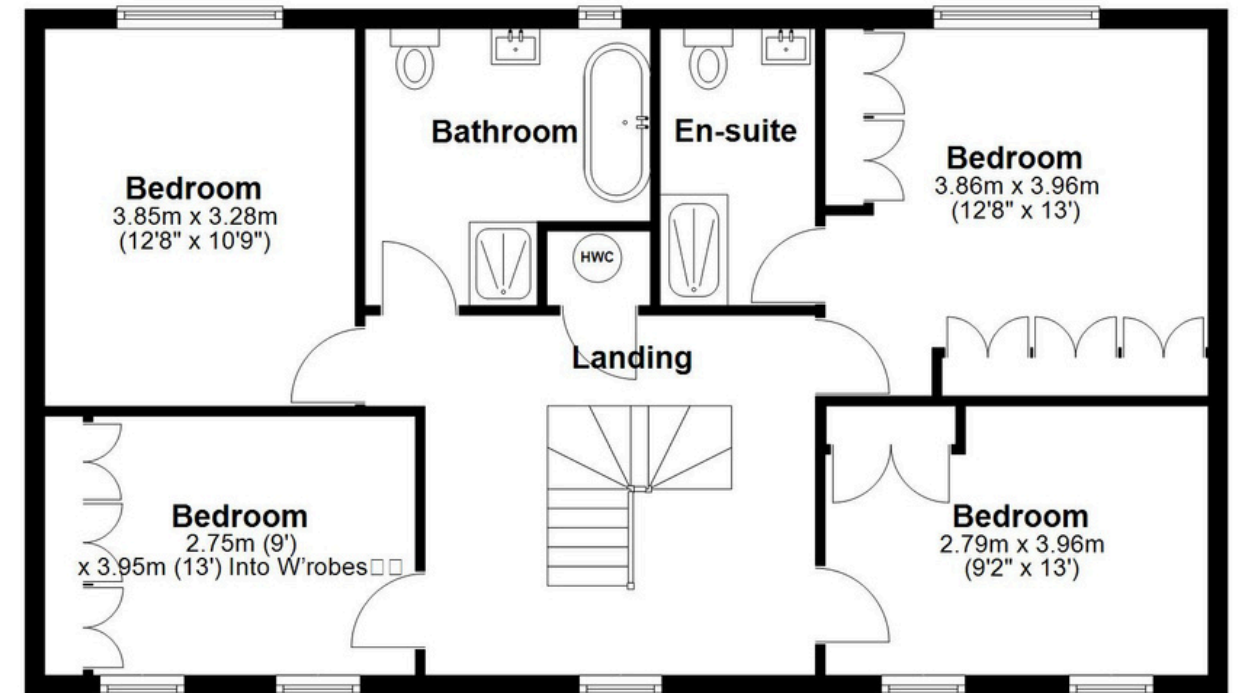
Ground Floor

Approx. 111.6 sq. metres (1201.3 sq. feet)



First Floor

Approx. 81.5 sq. metres (877.1 sq. feet)



Total area: approx. 193.1 sq. metres (2078.4 sq. feet)

This floor plan is for illustration purposes only, this is not intended to be a measured/scaled survey or comply with RICS guidelines. All measurements (including total floor area) openings, orientation and floor area are approximate. No details are guaranteed, they cannot be relied upon for any purpose and do not form part of any agreement. A party must rely upon its own inspection(s). No responsibility is taken for any error, omission, or mis-statement.

Plan produced using PlanUp.