

Need a Mortgage in principle
to make offers? Call us now
for quick assistance!
0121 775 0101



Do you need to sell?
Start your journey now!
Call us we can help.
0121 775 0101



SCAN FOR MORE INFO
SIZE - 1108 Sq Ft
TENURE - Leasehold
SERVICE CHARGE - £2,400
COUNCIL TAX - Solihull Metropolitan Borough Council - D
BROADBAND - Upload Max 1000Mbps
Download Max 1000Mbps
MOBILE - Three O2 Vodafone
EPC - C - 74
PARKING - Single Garage & Communal Parking
FLOODRISK - Very Low
SERVICES - Mains
COVENANTS - N/A

Are you an investor
interested in expanding your
portfolio?

**Call 0121 775 0101 to provide your
investment criteria for alerts.**

PARKLANDS

Solihull, B91

This stunning ground floor apartment offers a perfect blend of modern living and comfort. Spanning an impressive 1,109 square feet, the property has been fully modernised to meet contemporary standards while retaining its charm. This apartment is not just a home; it is a lifestyle choice in a prime location, making it an ideal opportunity for those seeking comfort and convenience in Solihull.

FEATURES

- Luxury Ground Floor Apartment
- Immaculately Presented Throughout
- Open Plan Lounge/Dining Room/Modern Kitchen
- Study/Occasional Bedroom
- Principal Bedroom with En-Suite Shower Room
- Double Bedroom Two
- Stunning Family Bathroom
- Single Garage & Communal Parking
- Communal Ground
- Walking Distance to Solihull Town Centre



SCAN TO **VIEW OUR
WEEKLY FILMS &
SUBSCRIBE**

Sneak Peeks

Every week, we unveil "Sneak Peeks," a feature showcasing exclusive properties before they hit Rightmove and other platforms.

The Landlord Club

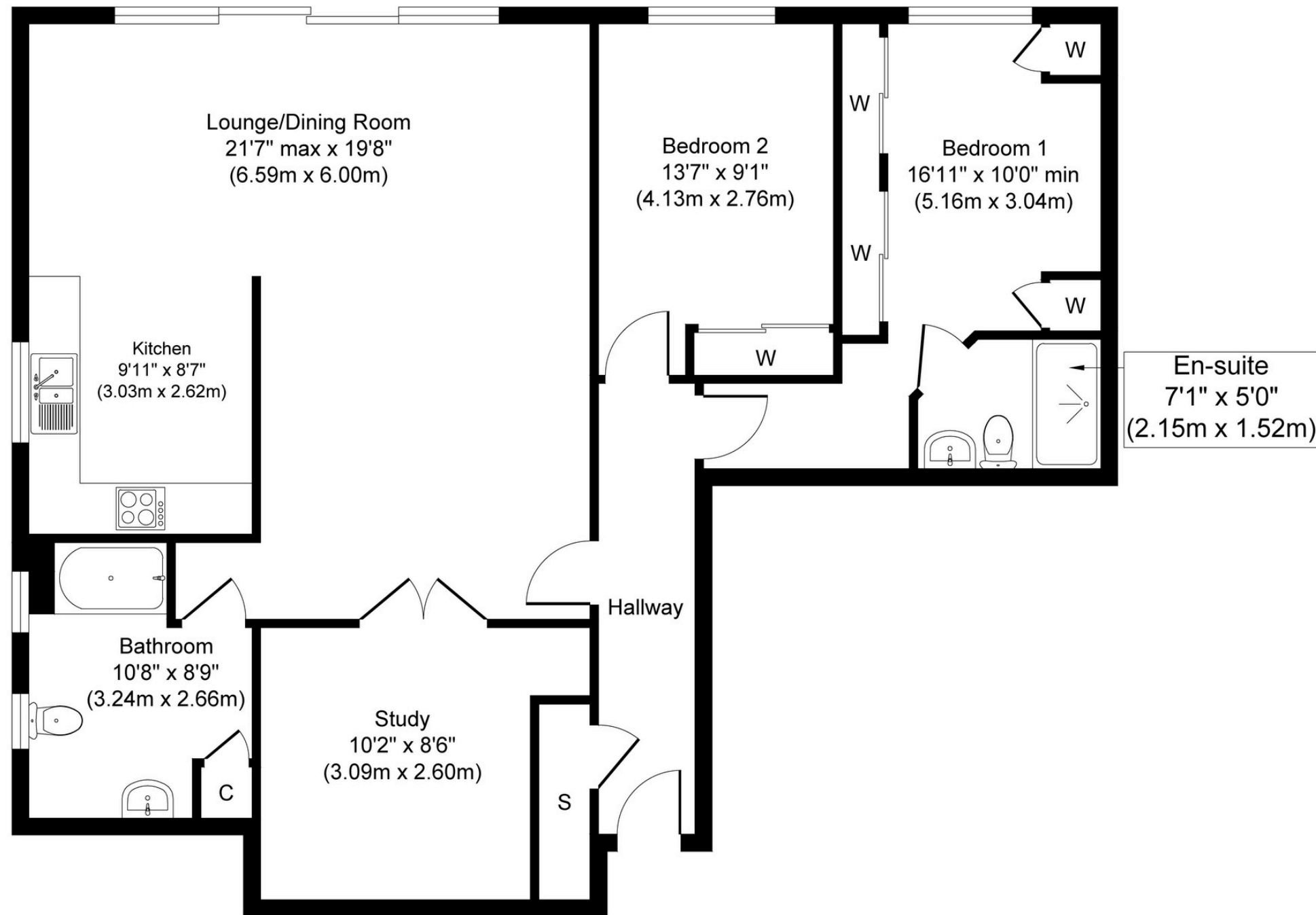
Join our Landlord Club for weekly updates on legislation, market trends, and our Letting Director's 'Investment Pick of the Week' for optimal ROI.

HTSPMD

Tune into 'How's The Solihull Property Market Dom' weekly for a quick, insightful snapshot of the market.

The Mortgage Update

Get weekly insights and the best deals with our Mortgage Update, your shortcut to navigating the complex mortgage landscape confidently.



Ground Floor
Approximate Floor Area
1,097 sq. ft
(101.94 sq. m)

Whilst every attempt has been made to ensure the accuracy of the floor plan contained here, measurements of doors, windows, rooms and any other items are approximate and no responsibility is taken for any error, omission, or mis-statement. The measurements should not be relied upon for valuation, transaction and/or funding purposes. This plan is for illustrative purposes only and should be used as such by any prospective purchaser or tenant.

The services, systems and appliances shown have not been tested and no guarantee as to their operability or efficiency can be given.

Copyright V360 Ltd 2025 | www.houseviz.com