

Need a Mortgage in principle
to make offers? Call us now
for quick assistance!
0121 775 0101



Do you need to sell?
Start your journey now!
Call us we can help.
0121 775 0101



SCAN FOR MORE INFO
SIZE - 2554 Sq Ft
TENURE - Freehold
COUNCIL TAX - Solihull Metropolitan Borough Council - G
BROADBAND - Upload Max 220Mbps
Download Max 1000Mbps
MOBILE - EE Three
EPC - C - 74
PARKING - For at least 4 Cars
FLOODRISK - Very Low
SERVICES - Mains
COVENANTS - N/A

Are you an investor
interested in expanding your
portfolio?

**Call 0121 775 0101 to provide your
investment criteria for alerts.**

HIRDEMONSWAY

Dickens Heath, B90

This impressive detached house is a true gem waiting to be discovered. With its generous living spaces, modern amenities and charming outdoor area, this home in Hirdemonsway is ready to welcome its new owners into a life of comfort and luxury. Offered with no upward chain, this property offers ample space for a growing family to thrive.

FEATURES

- Executive Detached Family Home
- Spacious Accommodation Set Over 3 Floors
- Dual Aspect Lounge & Separate Dining Room
- Breakfast Kitchen with Utility
- Principal Bedroom with Large En-Suite Bathroom
- Three Further First Floor Bedrooms, En-Suite & Family Bathroom
- Two Second Floor Bedrooms, Bathroom & Large Eases Storage
- Private South Facing Rear Garden
- Driveway Parking for Four Vehicles & Double Garage
- No Upward Chain



SCAN TO VIEW OUR
WEEKLY FILMS &
SUBSCRIBE

Sneak Peeks

Every week, we unveil "Sneak Peeks," a feature showcasing exclusive properties before they hit Rightmove and other platforms.

The Landlord Club

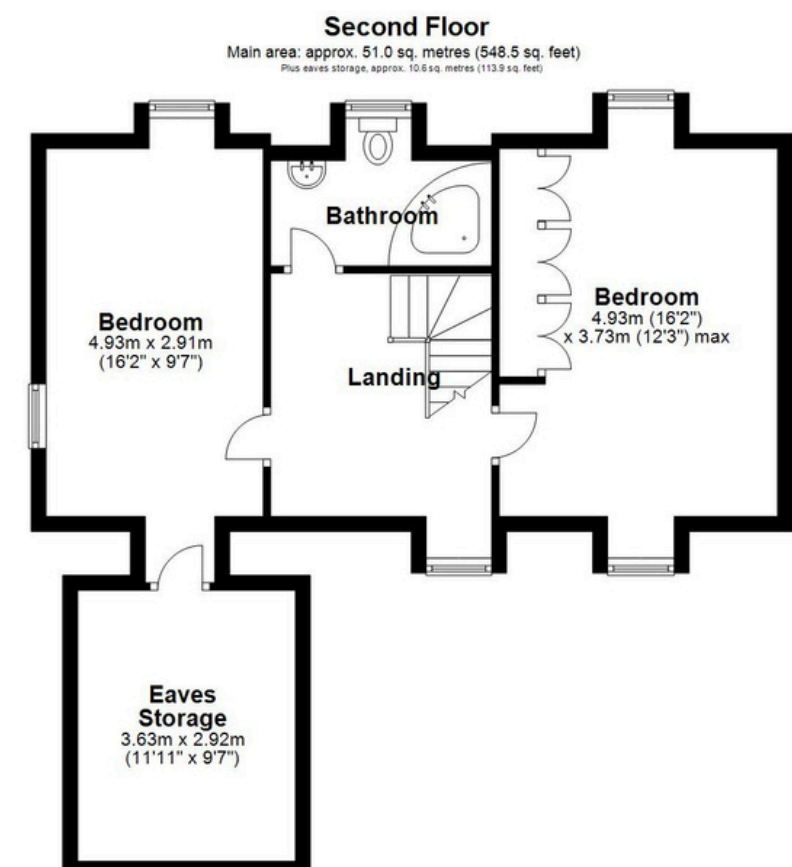
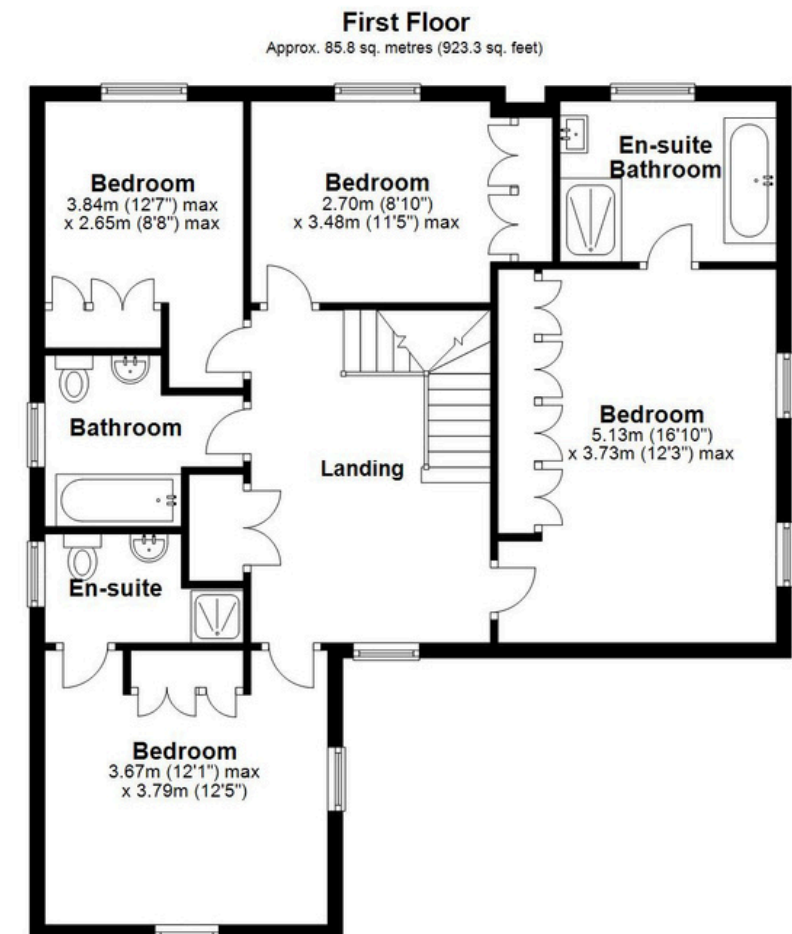
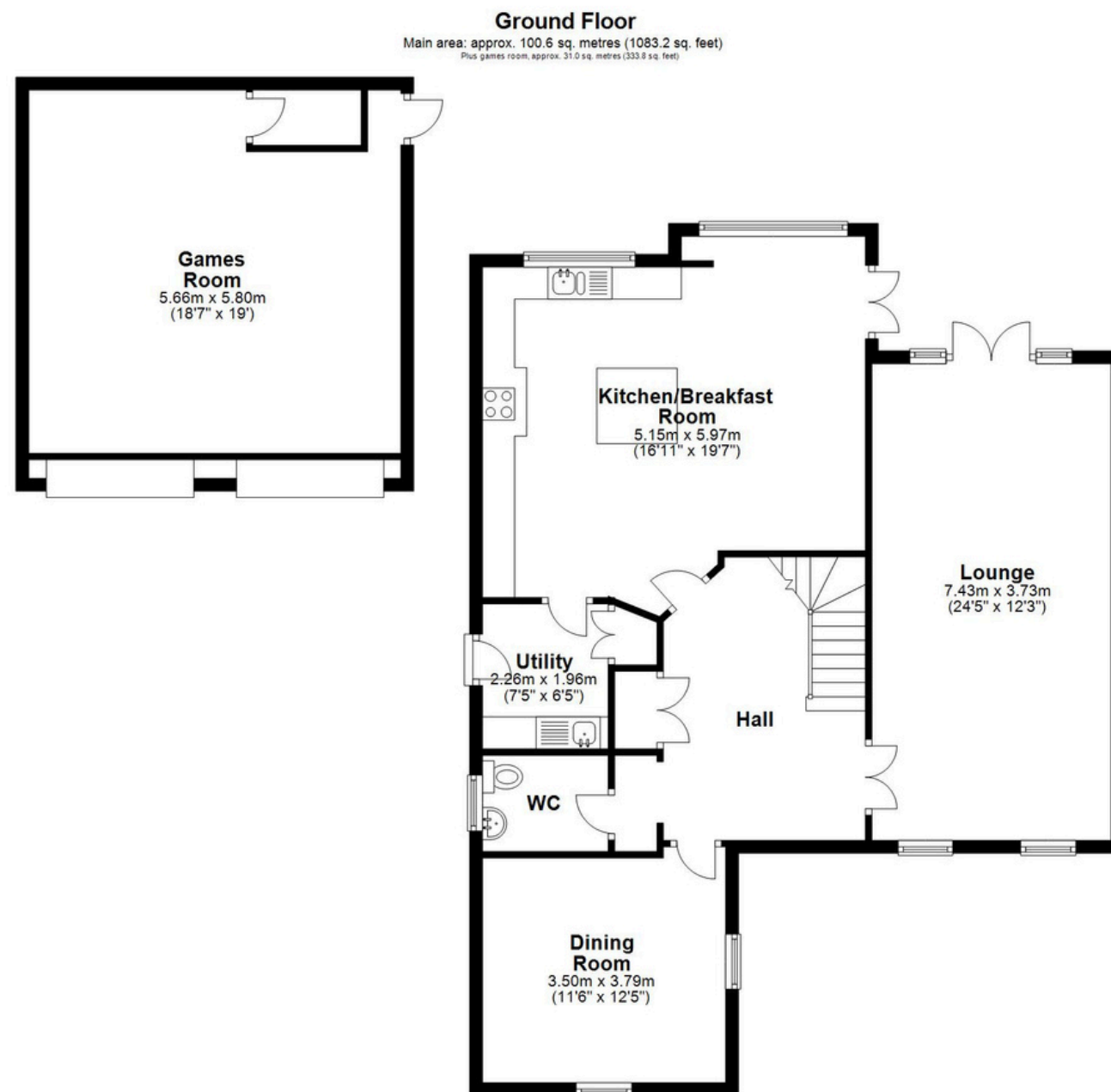
Join our Landlord Club for weekly updates on legislation, market trends, and our Letting Director's 'Investment Pick of the Week' for optimal ROI.

HTSPMD

Tune into 'How's The Solihull Property Market Dom' weekly for a quick, insightful snapshot of the market.

The Mortgage Update

Get weekly insights and the best deals with our Mortgage Update, your shortcut to navigating the complex mortgage landscape confidently.



Main area: Approx. 237.4 sq. metres (2554.9 sq. feet)
Plus games room, approx. 31.0 sq. metres (333.8 sq. feet)
Plus eaves storage, approx. 10.6 sq. metres (113.9 sq. feet)