

Need a Mortgage in principle
to make offers? Call us now
for quick assistance!
0121 775 0101



Do you need to sell?
Start your journey now!
Call us we can help.
01564 777 314



SCAN FOR MORE INFO
SIZE - 936Sq Ft
TENURE - Freehold
COUNCIL TAX - Solihull Metropolitan Borough Council - C
BROADBAND - Upload Max 220Mbps
Download Max 1800Mbps
EPC - E - 48
PARKING - Allocated Space
FLOODRISK - Very Low
SERVICES - Mains
COVENANTS - N/A

Wheeler Close

Chadwick End, B93

Located in the charming village of Chadwick End, this end terraced house on Wheeler Close presents a wonderful opportunity for those seeking a tranquil lifestyle. The property is located in a peaceful cul-de-sac, ensuring a serene environment for its residents. This home is perfect for families or individuals looking to enjoy the peaceful village life while still being within reach of Solihull's amenities.

FEATURES

- End Terraced Property in Quiet Cul-de-Sac Location
- Lounge with Feature Log Burner
- Separate Dining Room
- Farmhouse Style Kitchen
- Two Double Bedrooms
- Third Single Bedroom
- Modern Family Shower Room
- Allocated Parking Adjacent to Property
- Private Rear Garden with Views Beyond
- Picturesque Village Location

Are you an investor
interested in expanding your
portfolio?

Call **01564 777 314** to provide your
investment criteria for alerts.



SCAN TO **VIEW OUR**
WEEKLY FILMS &
SUBSCRIBE

Sneak Peeks

Every week, we unveil "Sneak Peeks," a feature showcasing exclusive properties before they hit Rightmove and other platforms.

The Landlord Club

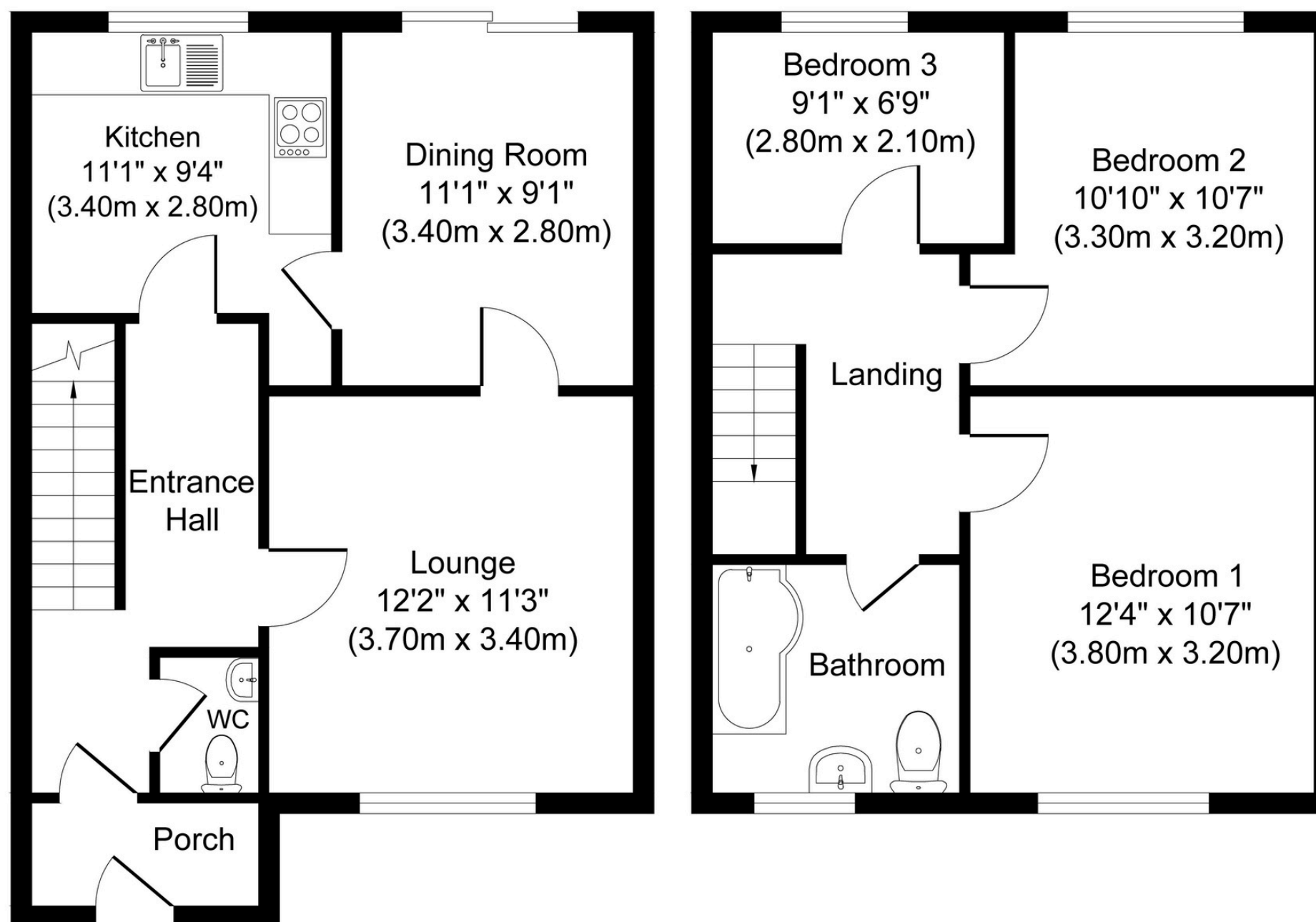
Join our Landlord Club for weekly updates on legislation, market trends, and our Letting Director's 'Investment Pick of the Week' for optimal ROI.

HTSPMD

Tune into 'How's The Solihull Property Market Dom' weekly for a quick, insightful snapshot of the market.

The Mortgage Update

Get weekly insights and the best deals with our Mortgage Update, your shortcut to navigating the complex mortgage landscape confidently.



Ground Floor
Approximate Floor Area
481 sq. ft
(44.68 sq. m)

First Floor
Approximate Floor Area
455 sq. ft
(42.31 sq. m)

Whilst every attempt has been made to ensure the accuracy of the floor plan contained here, measurements of doors, windows, rooms and any other items are approximate and no responsibility is taken for any error, omission, or mis-statement. The measurements should not be relied upon for valuation, transaction and/or funding purposes. This plan is for illustrative purposes only and should be used as such by any prospective purchaser or tenant.

The services, systems and appliances shown have not been tested and no guarantee as to their operability or efficiency can be given.

Copyright V360 Ltd 2025 | www.houseviz.com