

Need a Mortgage in principle
to make offers? Call us now
for quick assistance!
0121 775 0101



Do you need to sell?
Start your journey now!
Call us we can help.
01564 777 314



SCAN FOR MORE INFO
SIZE - 2262 Sq Ft
TENURE - Leasehold with 977 years remaining
COUNCIL TAX - Warwick District Council - G
BROADBAND - Upload Max 80Mbps
Download Max 20Mbps
MOBILE - O2
EPC - D - 56
PARKING - For at least 4 Cars
FLOODRISK - Very Low
SERVICES - Mains
COVENANTS - N/A

North Wing, Catesby House
Lapworth, B94

Nestled in the prestigious Catesby House on Lapworth Street, this semi-detached residence is a remarkable blend of original charm and modern elegance. The North Wing boasts an impressive array of features, including high ceilings and large windows that flood the space with natural light, creating a warm and inviting atmosphere.

FEATURES

- Exceptional Character Property with a Contemporary Feel
- Large hallway with Guest Cloakroom
- Living Room
- Stunning Kitchen/Dining/Family Room
- Two First Floor Double Bedrooms
- Bathroom & Shower Room
- Second Floor Principal Bedroom with En-Suite
- Further Double Bedroom with Bedroom 5/Dressing Room
- Private Walled Garden
- Secure Gated Development with Rural Outlook

Are you an investor
interested in expanding your
portfolio?

**Call 01564 777 314 to provide your
investment criteria for alerts.**



SCAN TO **VIEW OUR
WEEKLY FILMS &
SUBSCRIBE**

Sneak Peeks

Every week, we unveil "Sneak Peeks," a feature showcasing exclusive properties before they hit Rightmove and other platforms.

The Landlord Club

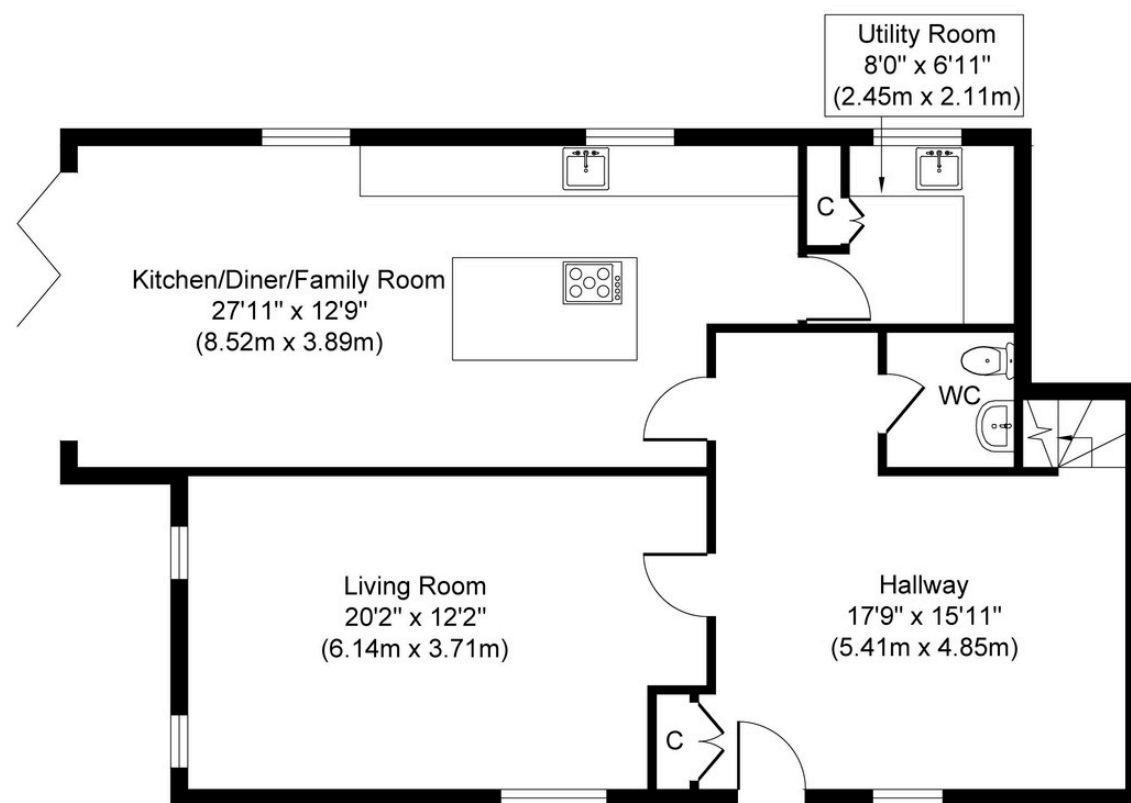
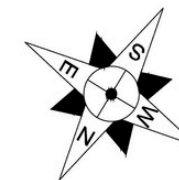
Join our Landlord Club for weekly updates on legislation, market trends, and our Letting Director's 'Investment Pick of the Week' for optimal ROI.

HTSPMD

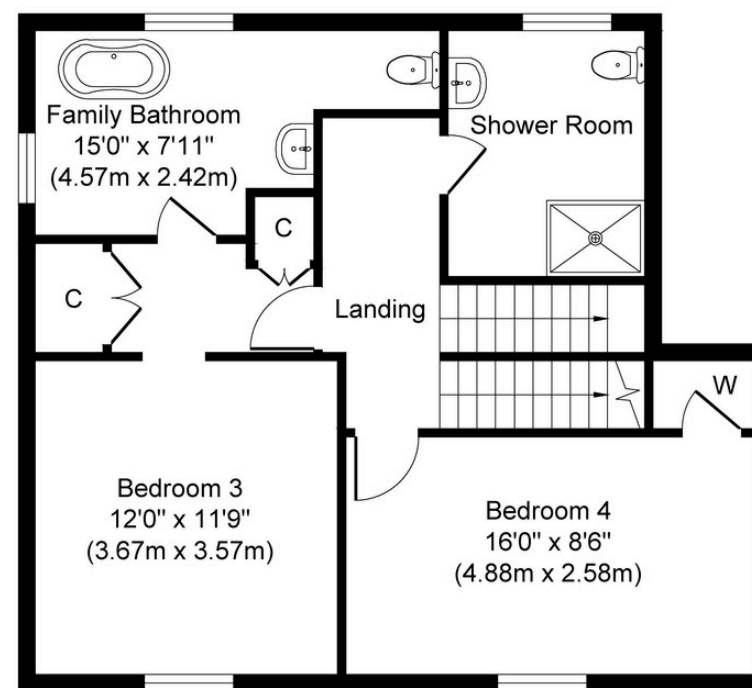
Tune into 'How's The Solihull Property Market Dom' weekly for a quick, insightful snapshot of the market.

The Mortgage Update

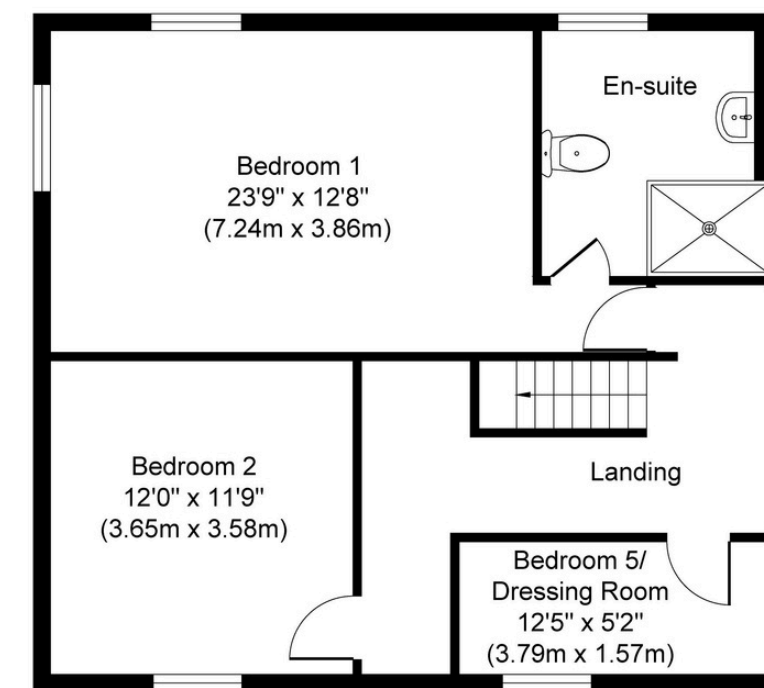
Get weekly insights and the best deals with our Mortgage Update, your shortcut to navigating the complex mortgage landscape confidently.



Ground Floor
Approximate Floor Area
920 sq. ft
(85.48 sq. m)



First Floor
Approximate Floor Area
643 sq. ft
(59.76 sq. m)



Second Floor
Approximate Floor Area
699 sq. ft
(64.92 sq. m)

Whilst every attempt has been made to ensure the accuracy of the floor plan contained here, measurements of doors, windows, rooms and any other items are approximate and no responsibility is taken for any error, omission, or mis-statement. The measurements should not be relied upon for valuation, transaction and/or funding purposes. This plan is for illustrative purposes only and should be used as such by any prospective purchaser or tenant.

The services, systems and appliances shown have not been tested and no guarantee as to their operability or efficiency can be given.