

Need a Mortgage in principle
to make offers? Call us now
for quick assistance!
0121 775 0101



Do you need to sell?
Start your journey now!
Call us we can help.
0121 775 0101



Apt 8, Great Charles Street

Birmingham City Centre

SCAN FOR MORE INFO
SIZE - 759 Sq Ft
TENURE - Leasehold
SERVICE CHARGE - £4,255 per annum
GROUND RENT - £450 per annum
COUNCIL TAX - Birmingham City Council - E
MOBILE - 02
EPC - E - 47
PARKING - Secure Parking for 1 Vehicle
FLOODRISK - Very Low
SERVICES - Mains
COVENANTS - N/A

Located in the heart of Birmingham, this remarkable top floor apartment offers a unique blend of modern living and urban charm. The residence is designed to impress with its stunning skyline views and abundant natural light, courtesy of large industrial windows that create a warm and inviting atmosphere.

FEATURES

- Stunning Top Floor City Centre Apartment with Skyline Views
- Offered with No Chain
- Open Plan Living Room with Integrated Kitchen
- Principal Bedroom with En-Suite
- Second Double Bedroom with En-Suite
- Two Private Roof Top Terrace with Bar
- Secure Allocated Parking for One Vehicle
- Lift Access
- Rental Value of Approximately £2,250pcm (6% Yield)

Are you an investor
interested in expanding your
portfolio?

Call 0121 775 0101 to provide your investment criteria for alerts.



SCAN TO VIEW OUR
WEEKLY FILMS &
SUBSCRIBE

Sneak Peeks

Every week, we unveil "Sneak Peeks," a feature showcasing exclusive properties before they hit Rightmove and other platforms.

The Landlord Club

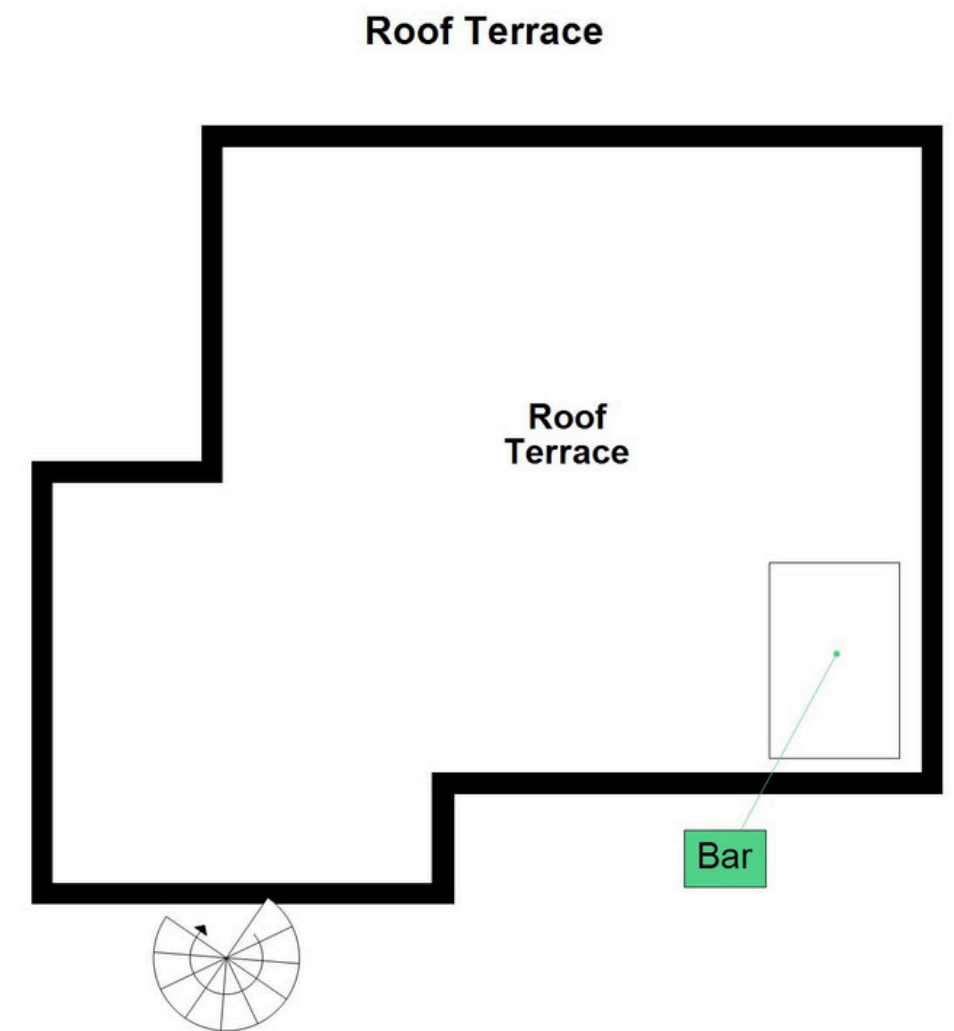
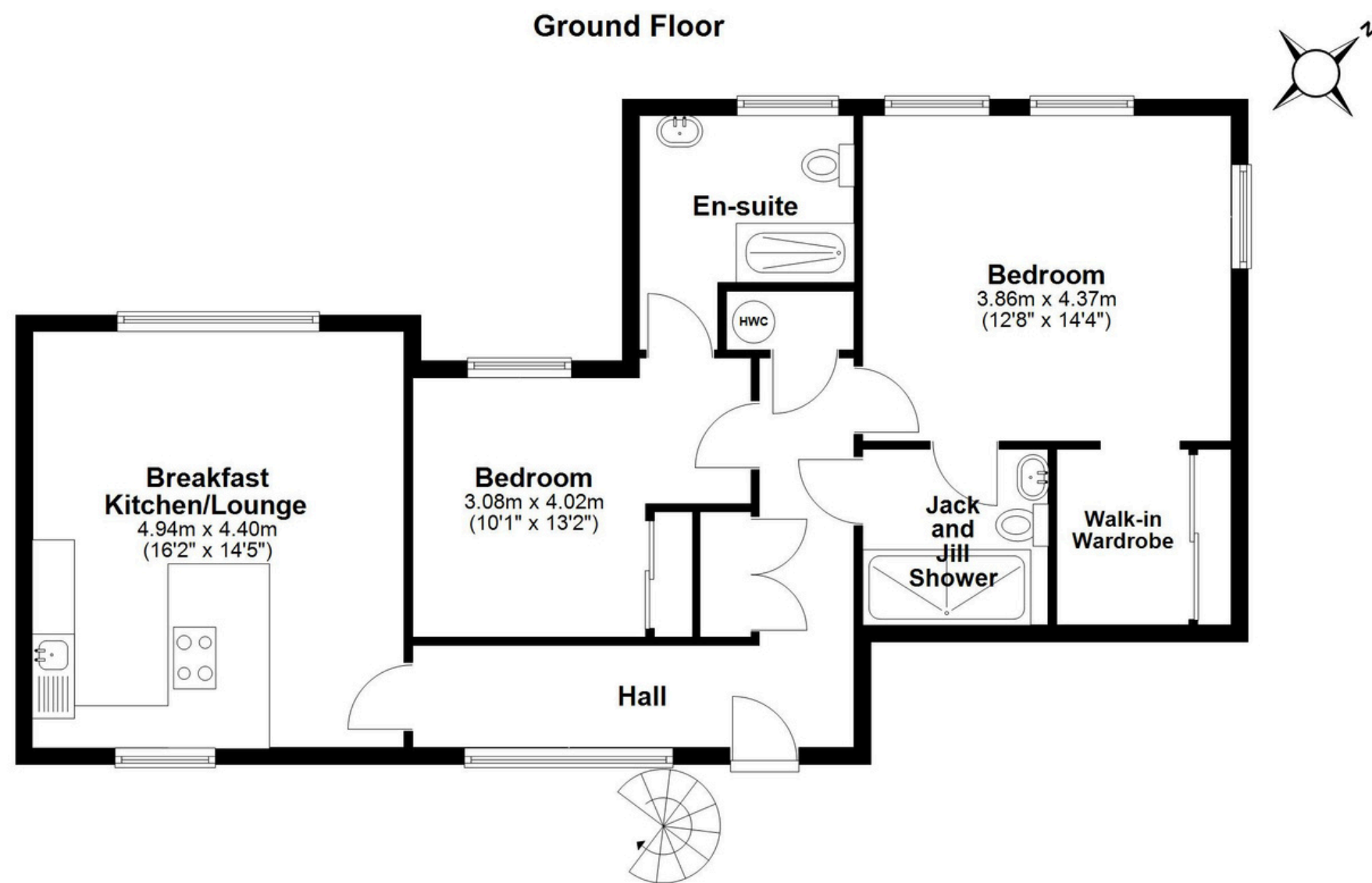
Join our Landlord Club for weekly updates on legislation, market trends, and our Letting Director's 'Investment Pick of the Week' for optimal ROI.

HTSPMD

Tune into 'How's The Solihull Property Market Dom' weekly for a quick, insightful snapshot of the market.

The Mortgage Update

Get weekly insights and the best deals with our Mortgage Update, your shortcut to navigating the complex mortgage landscape confidently.



Main area: Approx. 70.6 sq. metres (759.6 sq. feet)

Plus roof terrace, approx. 45.2 sq. metres (486.3 sq. feet)

This floor plan is for illustration purposes only, this is not intended to be a measured/scaled survey or comply with RICS guidelines. All measurements (including total floor area) openings, orientation and floor area are approximate. No details are guaranteed, they cannot be relied upon for any purpose and do not form part of any agreement. A party must rely upon its own inspection(s). No responsibility is taken for any error, omission, or mis-statement.

Plan produced using PlanUp.