

Need a Mortgage in principle  
to make offers? Call us now  
for quick assistance!  
**0121 775 0101**



Do you need to sell?  
Start your journey now!  
Call us we can help.  
**0121 775 0101**



**SCAN FOR MORE INFO**  
**SIZE** - 2035 Sq Ft  
**TENURE** - Freehold  
**COUNCIL TAX** - Solihull Metropolitan Borough Council - F  
**BROADBAND** - Upload Max 1000Mbps  
Download Max 1800Mbps  
**MOBILE** - O2 Vodaphone  
**EPC** - B - 83D - 55  
**PARKING** - For Multiple Vehicles  
**FLOODRISK** - Very Low  
**SERVICES** - Mains  
**COVENANTS** - N/A

Are you an investor  
interested in expanding your  
portfolio?

**Call 0121 775 0101 to provide your  
investment criteria for alerts.**

## GENTLESHAW LANE

**Solihull, B91**

Nestled on Gentleshaw Lane, this substantial detached family home offers an impressive 2,035 square feet of living space, perfect for those seeking comfort and style in a desirable area. This home is an exceptional opportunity for families looking for space, style and a peaceful setting in Solihull.

### FEATURES

- Spacious Detached Family Home
- Dual Aspect Lounge with Dining Area
- Breakfast Kitchen with Utility Room
- Sun Room with Balcony
- Principal Bedroom with En-Suite Shower Room
- Three Further Double Bedrooms
- Family Bathroom
- Secure Driveway Parking Behind Gates with Double Garage
- Private Long, Mature Rear Garden with Open Views Beyond
- Convenient Location to Solihull Town Centre & M42



SCAN TO **VIEW** OUR  
WEEKLY FILMS &  
**SUBSCRIBE**

### **Sneak Peeks**

Every week, we unveil "Sneak Peeks," a feature showcasing exclusive properties before they hit Rightmove and other platforms.

### **The Landlord Club**

Join our Landlord Club for weekly updates on legislation, market trends, and our Letting Director's 'Investment Pick of the Week' for optimal ROI.

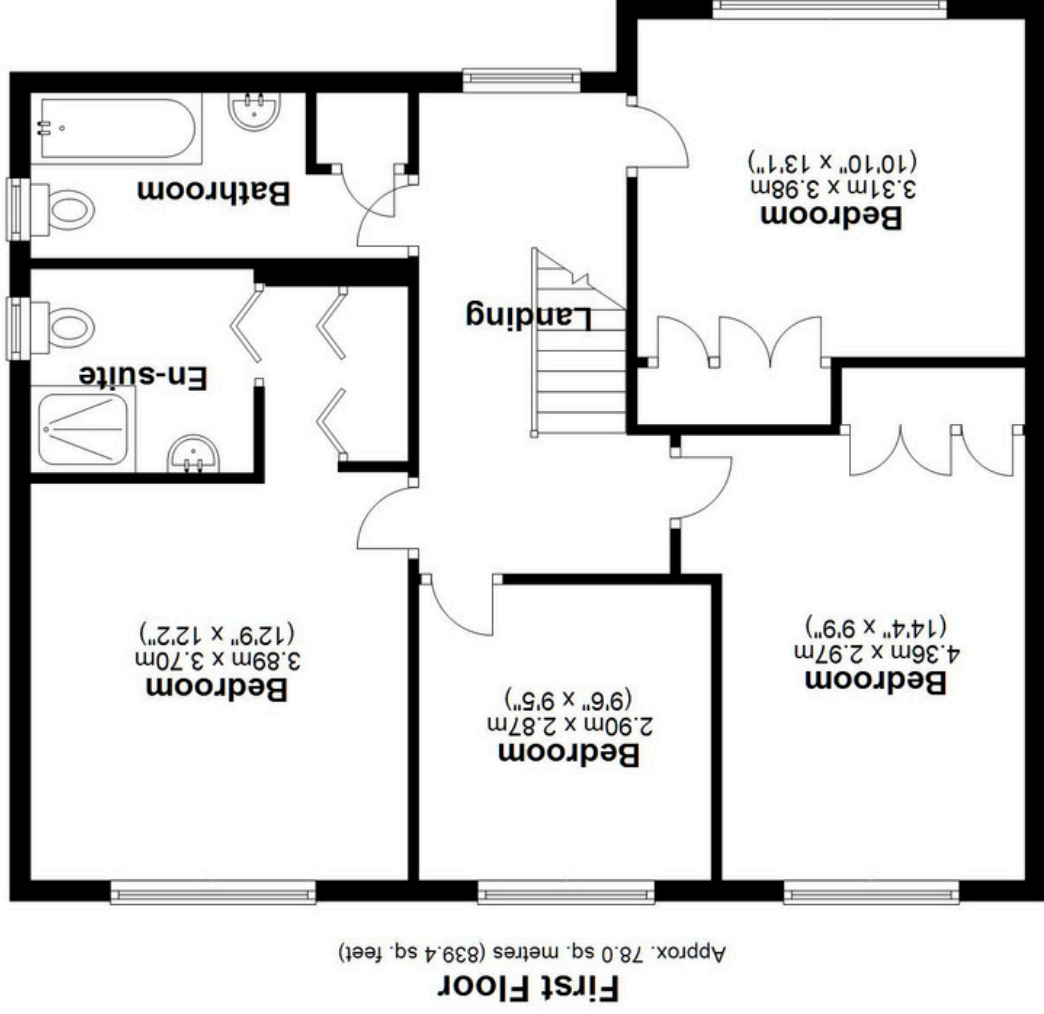
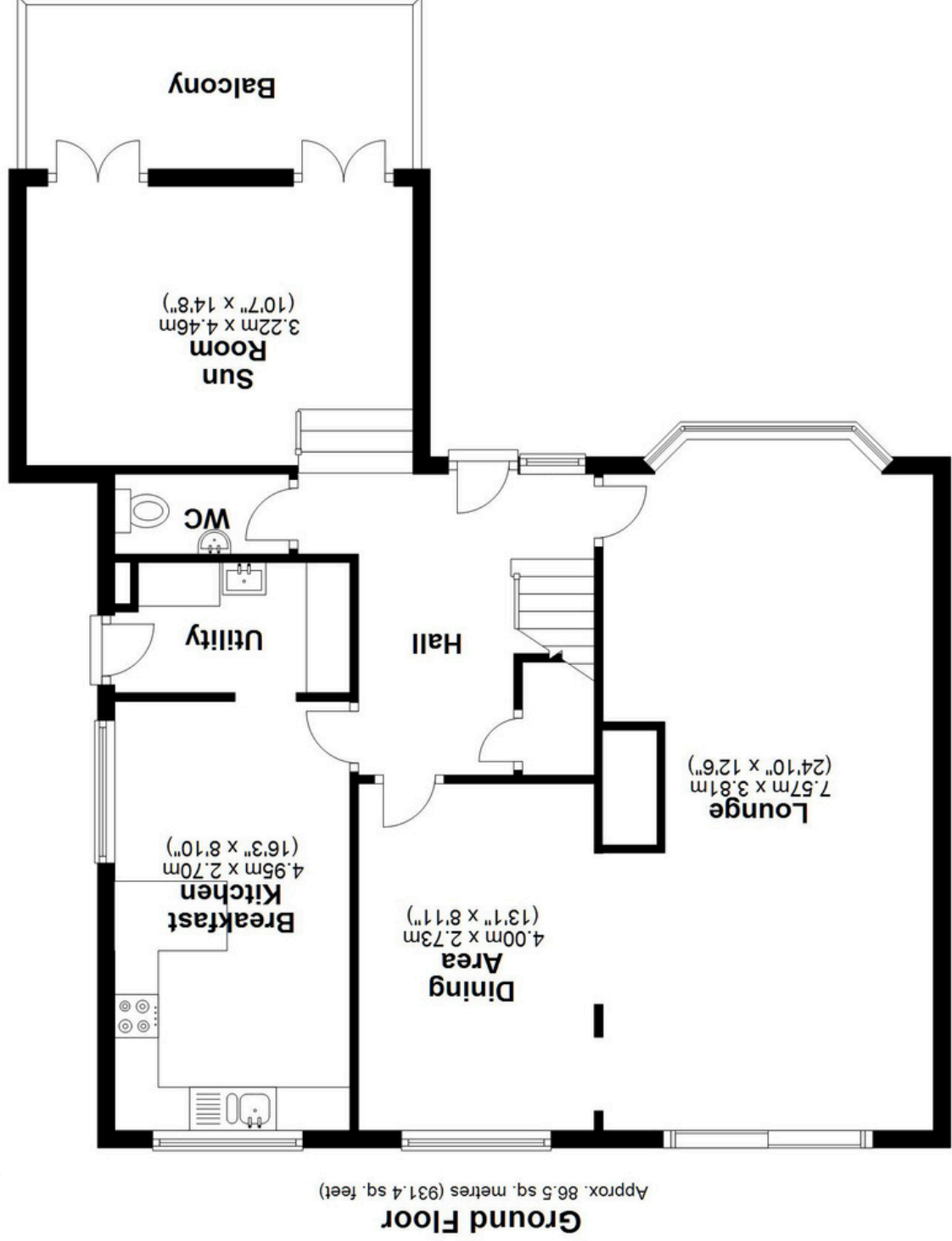
### **HTSPMD**

Tune into 'How's The Solihull Property Market Dom' weekly for a quick, insightful snapshot of the market.

### **The Mortgage Update**

Get weekly insights and the best deals with our Mortgage Update, your shortcut to navigating the complex mortgage landscape confidently.





Total area: approx. 189.1 sq. metres (2035.7 sq. feet)

This floor plan is for illustration purposes only, this is not intended to be a measured/scaled survey or comply with RICS guidelines. All measurements (including total floor area) openings, orientation and floor area are approximate. No details are guaranteed, they cannot be relied upon for any purpose and do not form part of any agreement. A party must rely upon its own inspection(s). No responsibility is taken for any error, omission, or mis-statement.

Plan produced using PlanUp.

