

Need a Mortgage in principle  
to make offers? Call us now  
for quick assistance!  
**0121 775 0101**



Do you need to sell?  
Start your journey now!  
Call us we can help.  
**01564 777 314**



**SCAN FOR MORE INFO**  
**SIZE** - 738 Sq Ft  
**TENURE** - Freehold  
**COUNCIL TAX** - Warwick District Council D.  
**BROADBAND** - Upload Max 220Mbps  
Download Max 1800Mbps  
**EPC** - B - 84  
**PARKING** - 4 Allocated Parking Spaces  
**FLOODRISK** - Very Low  
**SERVICES** - Mains  
**COVENANTS** - N/A

## 39 Kingswood Green

**Offers Over £400,000**

Situated in a quiet cul-de-sac, this charming end terrace offers a peaceful retreat while remaining conveniently close to local amenities. This property is perfect for first-time buyers, small families or those looking to downsize and is offered with no upward chain.

### FEATURES

- No Upward Chain
- Tastefully Presented End Terrace Property
- Open Plan Living Accommodation
- Fitted Kitchen with Appliances
- Two Double Bedrooms Both with Fitted Wardrobes
- Modern Family Bathroom
- South Facing Rear Garden
- 4 Allocated Parking Spaces
- Close to Local Canal Walks
- Village Location

Are you an investor  
interested in expanding your  
portfolio?

**Call 01564 777 314 to provide your  
investment criteria for alerts.**



SCAN TO **VIEW OUR  
WEEKLY FILMS &  
SUBSCRIBE**

### Sneak Peeks

Every week, we unveil "Sneak Peeks," a feature showcasing exclusive properties before they hit Rightmove and other platforms.

### The Landlord Club

Join our Landlord Club for weekly updates on legislation, market trends, and our Letting Director's 'Investment Pick of the Week' for optimal ROI.

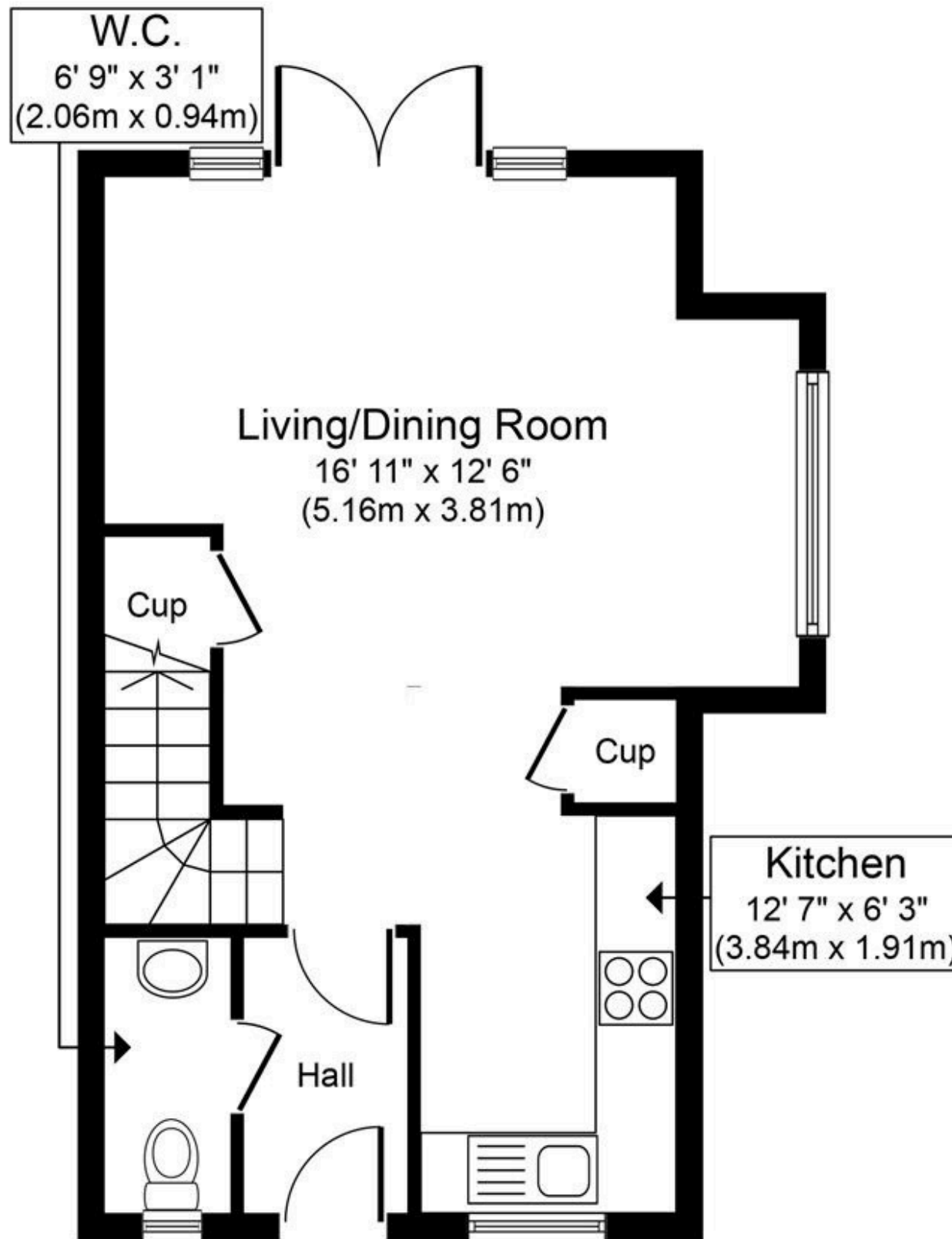
### HTSPMD

Tune into 'How's The Solihull Property Market Dom' weekly for a quick, insightful snapshot of the market.

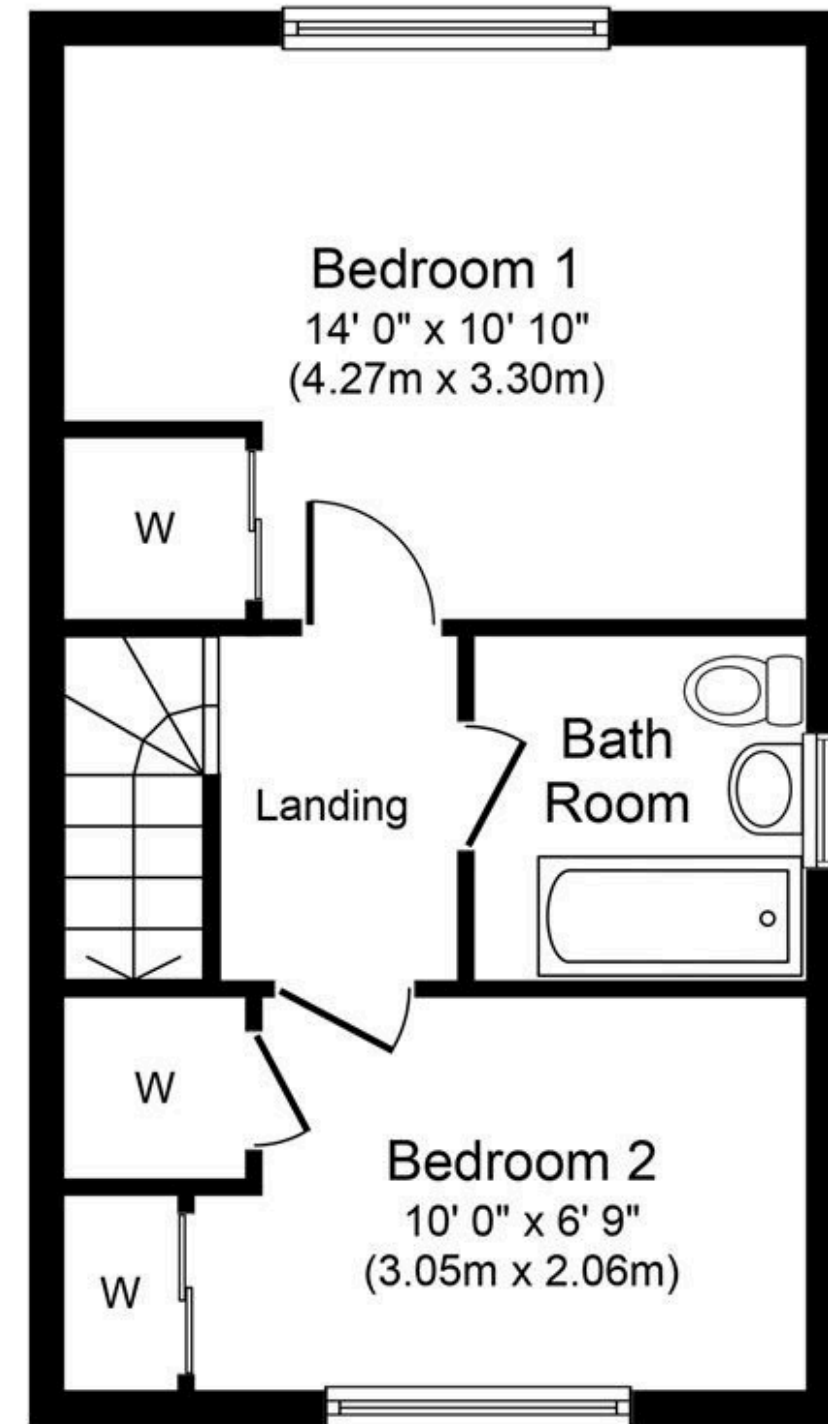
### The Mortgage Update

Get weekly insights and the best deals with our Mortgage Update, your shortcut to navigating the complex mortgage landscape confidently.





**Ground Floor**  
Approximate Floor Area  
383 sq. ft.  
(35.5 sq. m.)



**First Floor**  
Approximate Floor Area  
355 sq. ft.  
(33.0 sq. m.)

Whilst every attempt has been made to ensure the accuracy of the floor plan contained here, measurements of doors, windows, rooms and any other items are approximate and no responsibility is taken for any error, omission, or mis-statement. The measurements should not be relied upon for valuation, transaction and/or funding purposes. This plan is for illustrative purposes only and should be used as such by any prospective purchaser or tenant. The services, systems and appliances shown have not been tested and no guarantee as to their operability or efficiency can be given.