

Need a Mortgage in principle
to make offers? Call us now
for quick assistance!
0121 775 0101



Do you need to sell?
Start your journey now!
Call us we can help.
01564 777 314



132 Earlswood Common

Earlswood, B94

SCAN FOR MORE INFO
SIZE - 2148 Sq Ft
TENURE - Freehold
COUNCIL TAX - Stratford upon Avon District Council - E
BROADBAND - Download Superfast 80Mbps
Upload 20Mbps
MOBILE - Vodafone
EPC - E - 48
PARKING - For numerous vehicles
FLOODRISK - Very Low
SERVICES - Mains
COVENANTS - N/A

This beautifully presented dormer bungalow is ideally situated to enjoy the tranquillity of rural life without sacrificing convenience. The property is nestled in the heart of Earlswood, known for its scenic landscapes and peaceful environment. The location combines the beauty of countryside living with easy access to local amenities, making it a perfect choice for families or anyone seeking a quiet, scenic setting.

FEATURES

- Five Bedroom Dormer Bungalow
- Lounge with French Doors to Garden
- Open Plan Kitchen/Diner with New Appliances
- Sun Room with Stunning Views
- Four Ground Floor Bedrooms
- Shower Room and Separate W/C
- Second Floor Principal Bedroom with En-Suite Bathroom
- Stunning Private Rear Garden with Vegetable Patch
- Two Single Garages
- Breath Taking Countryside Views to Rear

Are you an investor
interested in expanding your
portfolio?

**Call 01564 777 314 to provide your
investment criteria for alerts.**



SCAN TO **VIEW OUR
WEEKLY FILMS &
SUBSCRIBE**

Sneak Peeks

Every week, we unveil "Sneak Peeks," a feature showcasing exclusive properties before they hit Rightmove and other platforms.

The Landlord Club

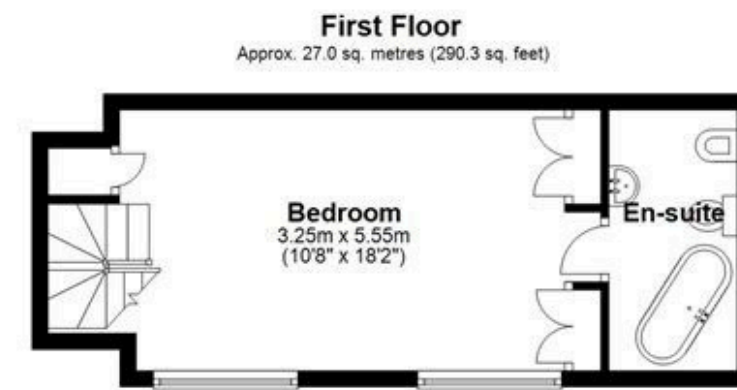
Join our Landlord Club for weekly updates on legislation, market trends, and our Letting Director's 'Investment Pick of the Week' for optimal ROI.

HTSPMD

Tune into 'How's The Solihull Property Market Dom' weekly for a quick, insightful snapshot of the market.

The Mortgage Update

Get weekly insights and the best deals with our Mortgage Update, your shortcut to navigating the complex mortgage landscape confidently.



Total area: approx. 199.6 sq. metres (2148.3 sq. feet)

This floor plan is for illustration purposes only; this is not intended to be a measured/scaled survey or comply with RICS guidelines. All measurements (including total floor area) openings, orientation and floor area are approximate. No details are guaranteed, they cannot be relied upon for any purpose and do not form part of any agreement. A party must rely upon its own inspection(s). No responsibility is taken for any error, omission, or mis-statement.
Plan produced using PlanUp.