

Need a Mortgage in principle
to make offers? Call us now
for quick assistance!
0121 775 0101



Do you need to sell?
Start your journey now!
Call us we can help.
01564 777 314



SCAN FOR MORE INFO
SIZE - 726 Sq Ft
TENURE - Freehold
COUNCIL TAX - Solihull Metropolitan Borough Council - D
BROADBAND - Upload Max 1000Mbps
Download Max 1800 Mbps
MOBILE - EE
EPC - C - 70
PARKING - Driveway
FLOODRISK - Very Low
SERVICES - Mains
COVENANTS - N/A

Are you an investor
interested in expanding your
portfolio?

**Call 01564 777 314 to provide your
investment criteria for alerts.**

4 Shelwick Grove

Dorridge, B93

This delightful semi-detached house presents an excellent opportunity for first-time buyers or investors alike. With no upward chain and falling under the popular Arden Academy catchment, this property is ready for you to move in and make it your own. This property is a true gem in a sought-after location, offering a blend of comfort, style and practicality.

FEATURES

- No Upward Chain
- Cul-de-Sac Location
- Semi-Detached Property
- Lounge/Dining Room
- Fitted Kitchen with Appliances
- Three Bedrooms
- Shower Room
- Private Rear Garden
- Driveway Parking and Detached Single Garage
- Arden Academy Catchment



SCAN TO **VIEW OUR
WEEKLY FILMS &
SUBSCRIBE**

Sneak Peeks

Every week, we unveil "Sneak Peeks," a feature showcasing exclusive properties before they hit Rightmove and other platforms.

The Landlord Club

Join our Landlord Club for weekly updates on legislation, market trends, and our Letting Director's 'Investment Pick of the Week' for optimal ROI.

HTSPMD

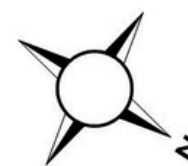
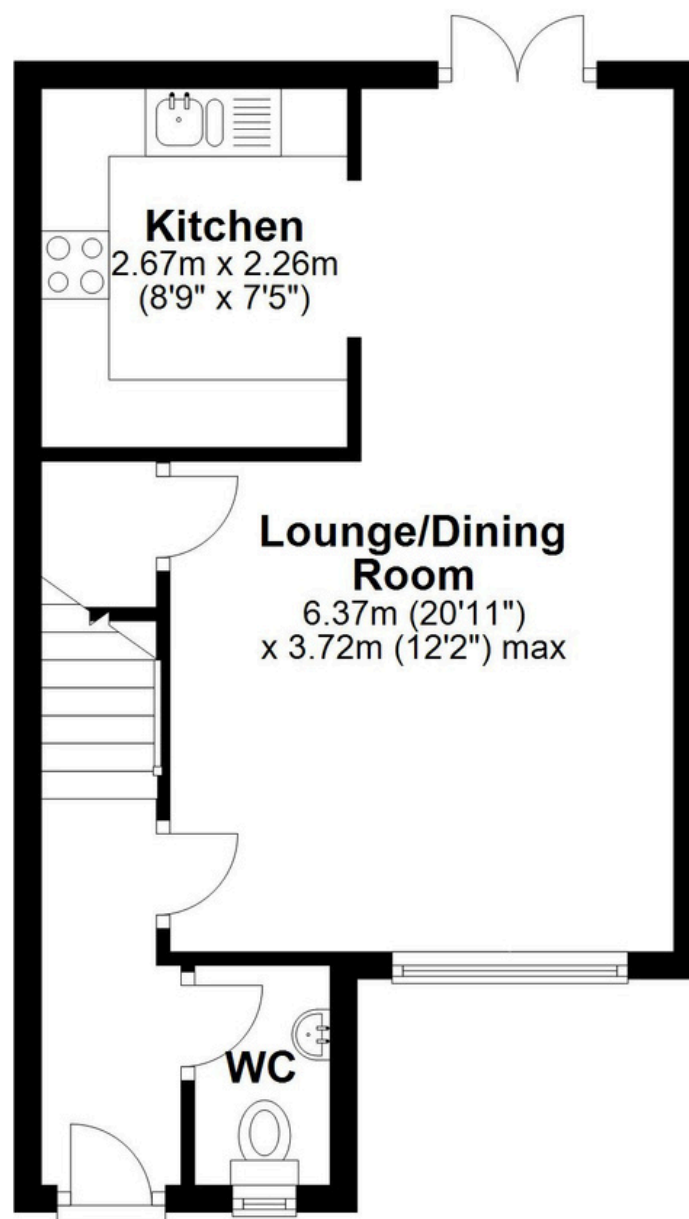
Tune into 'How's The Solihull Property Market Dom' weekly for a quick, insightful snapshot of the market.

The Mortgage Update

Get weekly insights and the best deals with our Mortgage Update, your shortcut to navigating the complex mortgage landscape confidently.

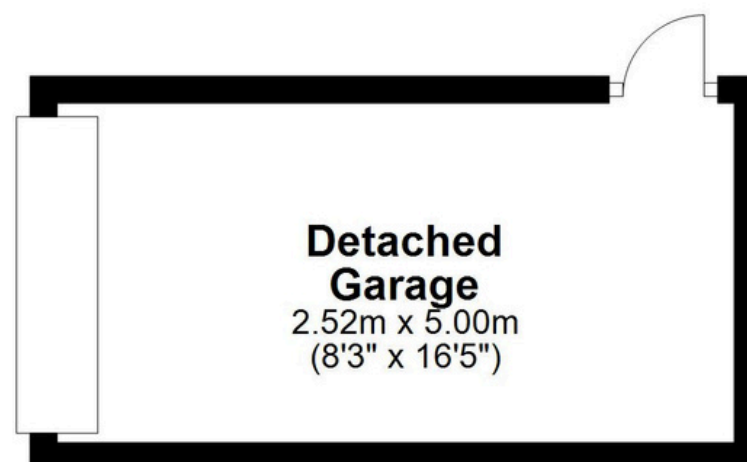
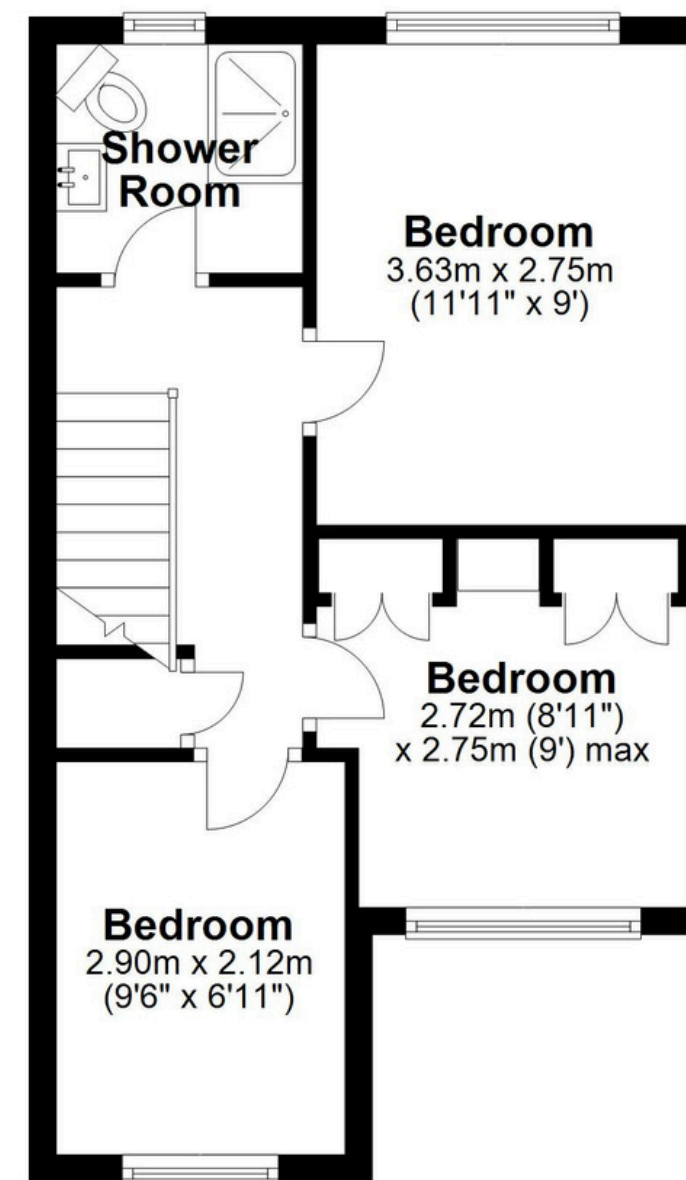
Ground Floor

Approx. 33.5 sq. metres (360.2 sq. feet)



First Floor

Approx. 34.0 sq. metres (365.9 sq. feet)



Total area: approx. 67.5 sq. metres (726.1 sq. feet)

This floor plan is for illustration purposes only, this is not intended to be a measured/scaled survey or comply with RICS guidelines. All measurements (including total floor area) openings, orientation and floor area are approximate. No details are guaranteed, they cannot be relied upon for any purpose and do not form part of any agreement. A party must rely upon its own inspection(s). No responsibility is taken for any error, omission, or mis-statement.
Plan produced using PlanUp.